
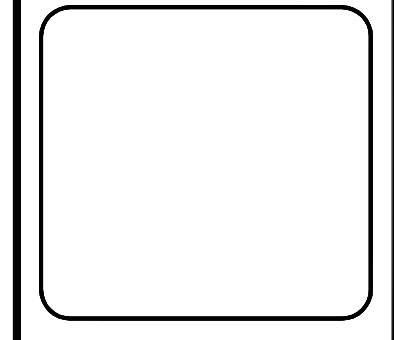


PRELIMINARY ISSUE
THIS PLAN ISSUED FOR
ADVANCE INFORMATION ONLY


US Army Corps
of Engineers
San Francisco District
1455 Market Street
San Francisco, CA 94103



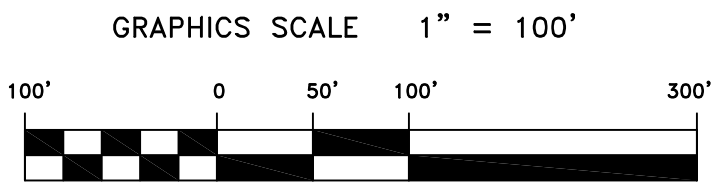
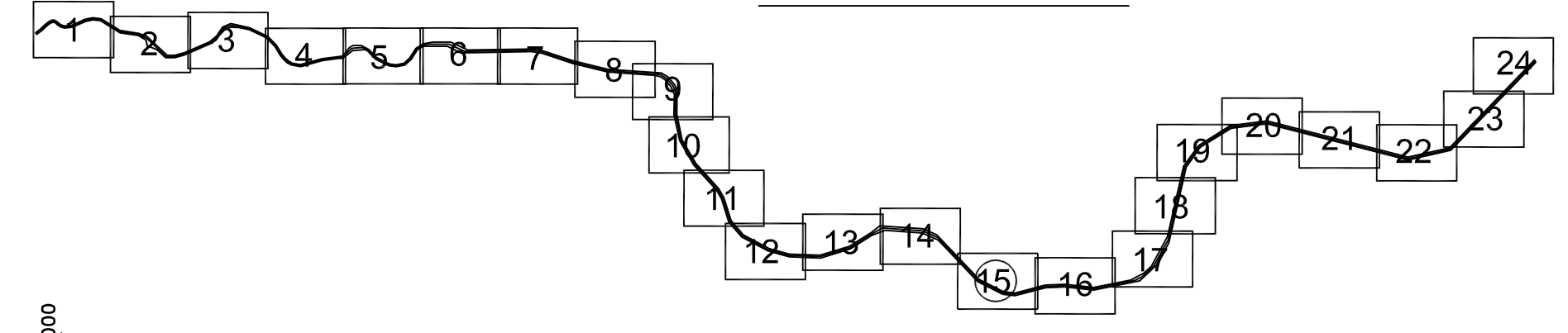
Mark	Description	Date	Appr.

SUBMITTED: MC Hydro Survey Team Leader	CHECKED BY:	DRAWN BY:
	TJVW	EWC
APPROVAL RECOMMENDED:	SHEET NO.	DRAWING NO.
CHIEF, Technical Support Section	6/13/2008	15 OF 24
APPROVED:	DATE	SHEET NO.
CHIEF, Construction Branch	6/13/2008	50
		2
		165
	DESIGNED BY:	PREPARED UNDER THE DIRECTION OF
		CRAIG W. KILEY
		LT. COLONEL, C.E., DISTRICT ENGINEER

CALIFORNIA
NAPA COUNTY
NAPA RIVER
CONDITION SURVEY
06, 9-11 JUNE 2008

Sheet reference number
C15

SHEET INDEX



MATCHLINE - SHEET 16

MATCHLINE - SHEET 14