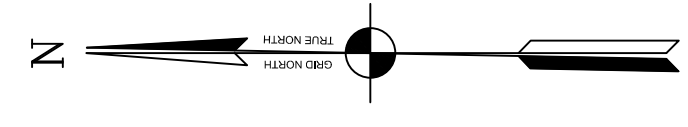
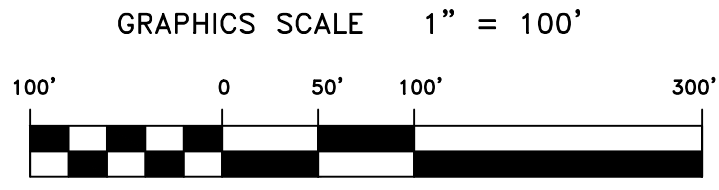
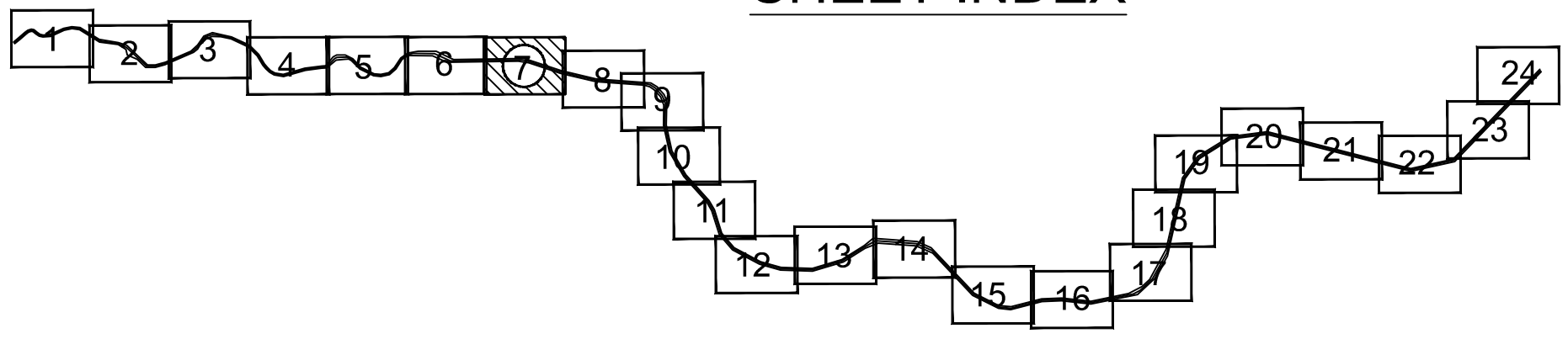


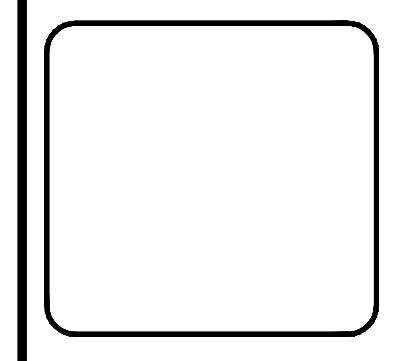
PRELIMINARY ISSUE
THIS PLAN ISSUED FOR
ADVANCE INFORMATION ONLY



SHEET INDEX



US Army Corps
of Engineers
San Francisco District
1455 Market Street
San Francisco, CA 94103



Mark	Description	Date	Appr.

DESIGNED BY:	CHIEF OF PARTY	CHECKED BY:	DRAWN BY:
DATE:	04/19/2012	DATE:	04/19/2012
APPROVAL RECOMMENDED:	CHIEF, Geomatics Section	APPROVAL RECOMMENDED:	CHIEF, Construction Branch
APPROVED:	TORREY A. DICIRO LT. COLONEL, C.E., DISTRICT ENGINEER	APPROVED:	TORREY A. DICIRO LT. COLONEL, C.E., DISTRICT ENGINEER
PREPARED UNDER THE DIRECTION OF:	TORREY A. DICIRO	PREPARED UNDER THE DIRECTION OF:	TORREY A. DICIRO
DATE:	04/19/2012	DATE:	04/19/2012
SHEET NO.:	1 OF 24	SHEET NO.:	50 OF 2
DRAWING NO.:		DRAWING NO.:	

CALIFORNIA
NAPA COUNTY
NAPA RIVER
CONDITION SURVEY
3-7 & 12, 17 & 19 APRIL 2012

Sheet
reference
number
C7

MATCHLINE - SHEET 8

MATCHLINE - SHEET 6