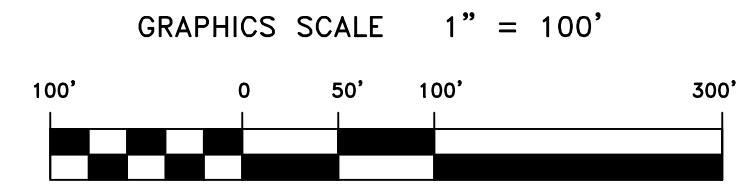
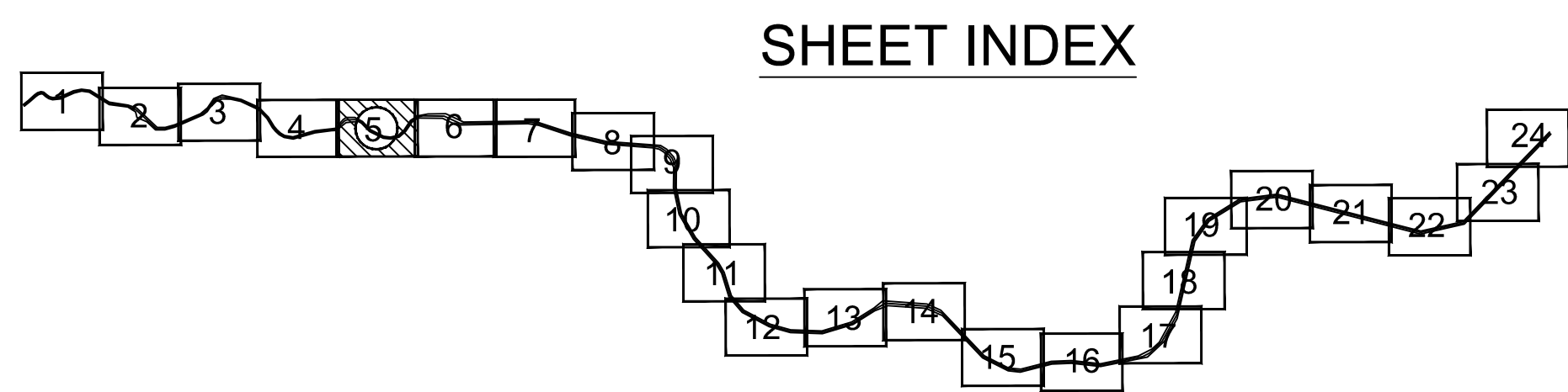
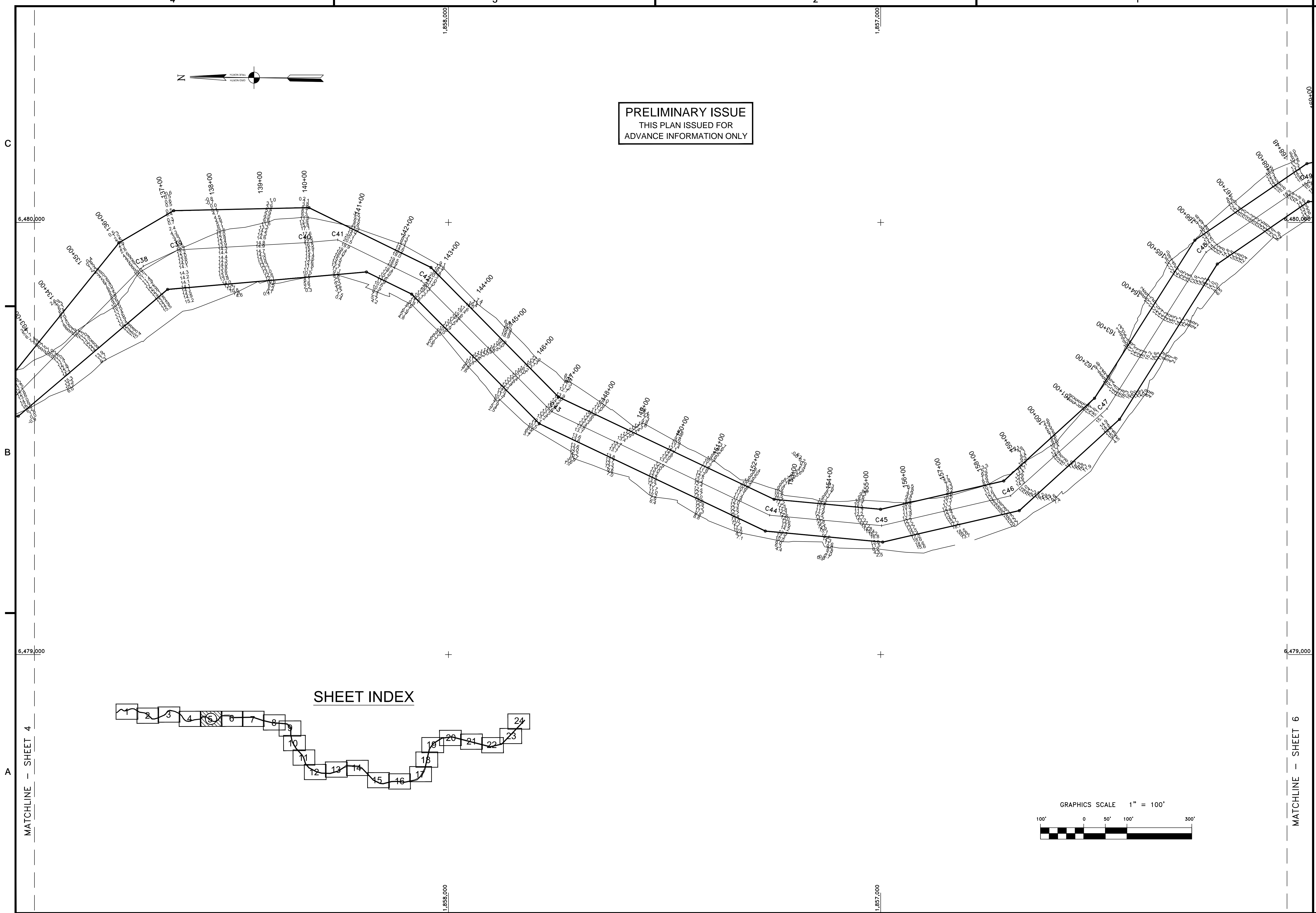


PRELIMINARY ISSUE
 THIS PLAN ISSUED FOR
 ADVANCE INFORMATION ONLY



US Army Corps
 of Engineers
 San Francisco District
 1455 Market Street
 San Francisco, CA 94103

Mark	Description	Date	Appr.

SUBMITTED:	PDT	CHECKED BY:	DRAWN BY:	PDT
Hydro Survey Team Leader		PDT	PDT	
APPROVAL RECOMMENDED:	SHEET NO.	DRAWING NO.		
CHM, Geomatics Section	1 OF 24	50	2	
APPROVED:	PREPARED UNDER THE DIRECTION OF			
CHM, Construction Branch	TORREY A. DICIRO			
	LT. COLONEL, C.E., DISTRICT ENGINEER			

CALIFORNIA
 NAPA COUNTY
NAPA RIVER
 CONDITION SURVEY
 3-7 & 12, 17 & 19 APRIL 2012

Sheet
 reference
 number
C5