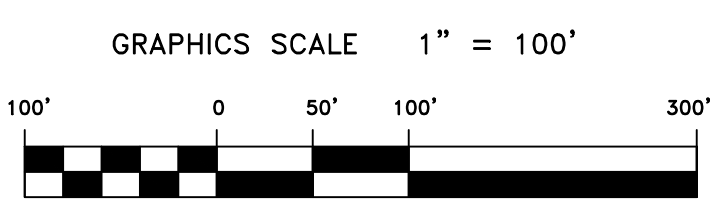
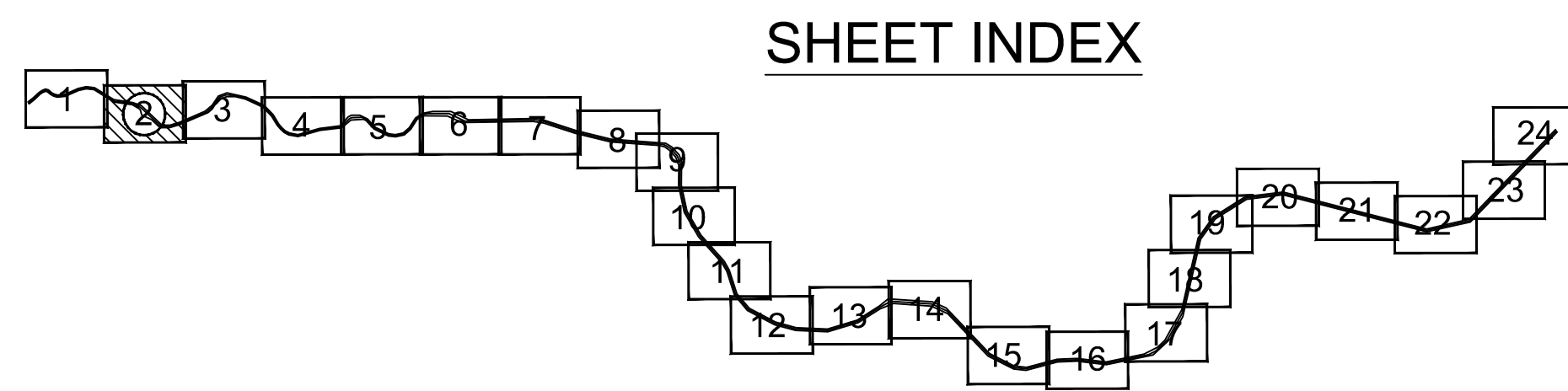


PRELIMINARY ISSUE
THIS PLAN ISSUED FOR
ADVANCE INFORMATION ONLY



US Army Corps
of Engineers
San Francisco District
1455 Market Street
San Francisco, CA 94103

--

Mark	Description	Date	Appr.

DESIGNED BY:		CHECKED BY:		DRAWN BY:		PDT
DATE:	04/19/2012	SHEET NO.:	1 OF 24	DRAWING NO.:	50	2
APPROVAL RECOMMENDED:		PREPARED UNDER THE DIRECTION OF:	TORREY A. DICIRO			
APPROVED:			LT. COLONEL, C.E., DISTRICT ENGINEER			

CALIFORNIA
NAPA COUNTY
NAPA RIVER
CONDITION SURVEY
3-7 & 12, 17 & 19 APRIL 2012

Sheet
reference
number
C2

MATCHLINE - SHEET 3

MATCHLINE - SHEET 1

A

B

C

4

1,867,000

3

1,866,000

2

1

1,865,000

6,480,000

6,480,000

6,479,000

6,479,000

1,867,000

1,866,000

1,865,000