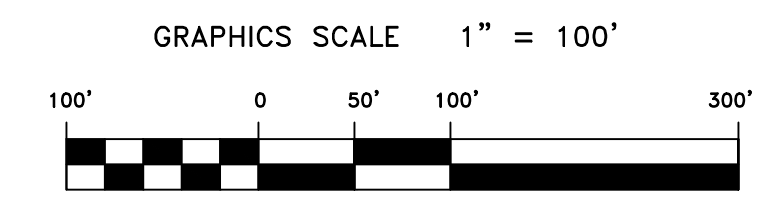
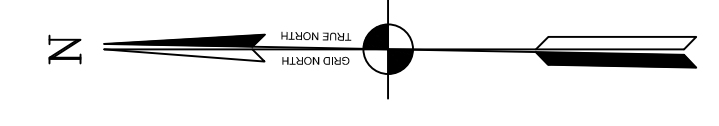
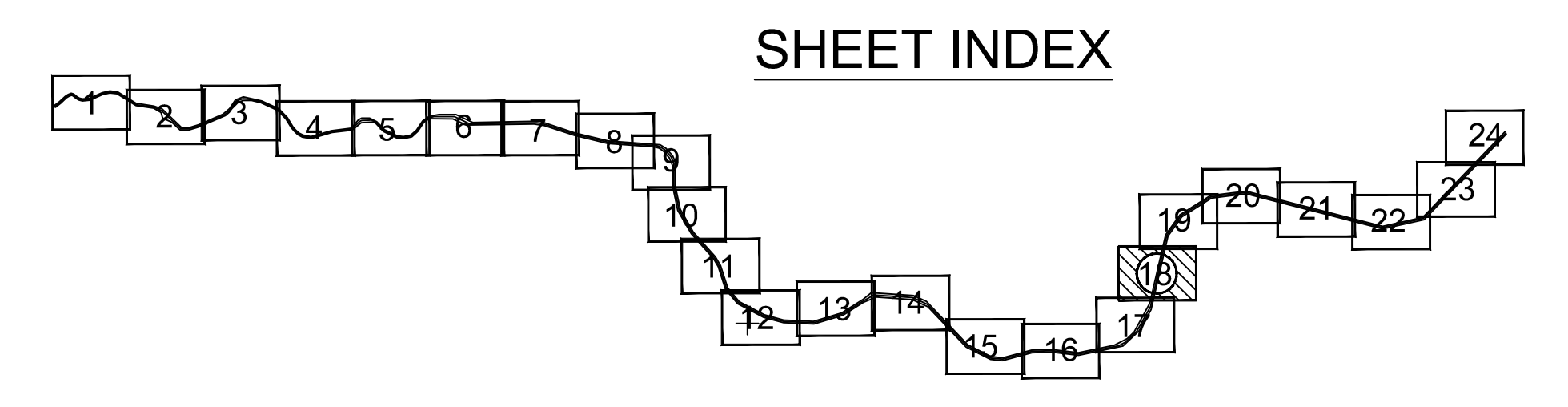
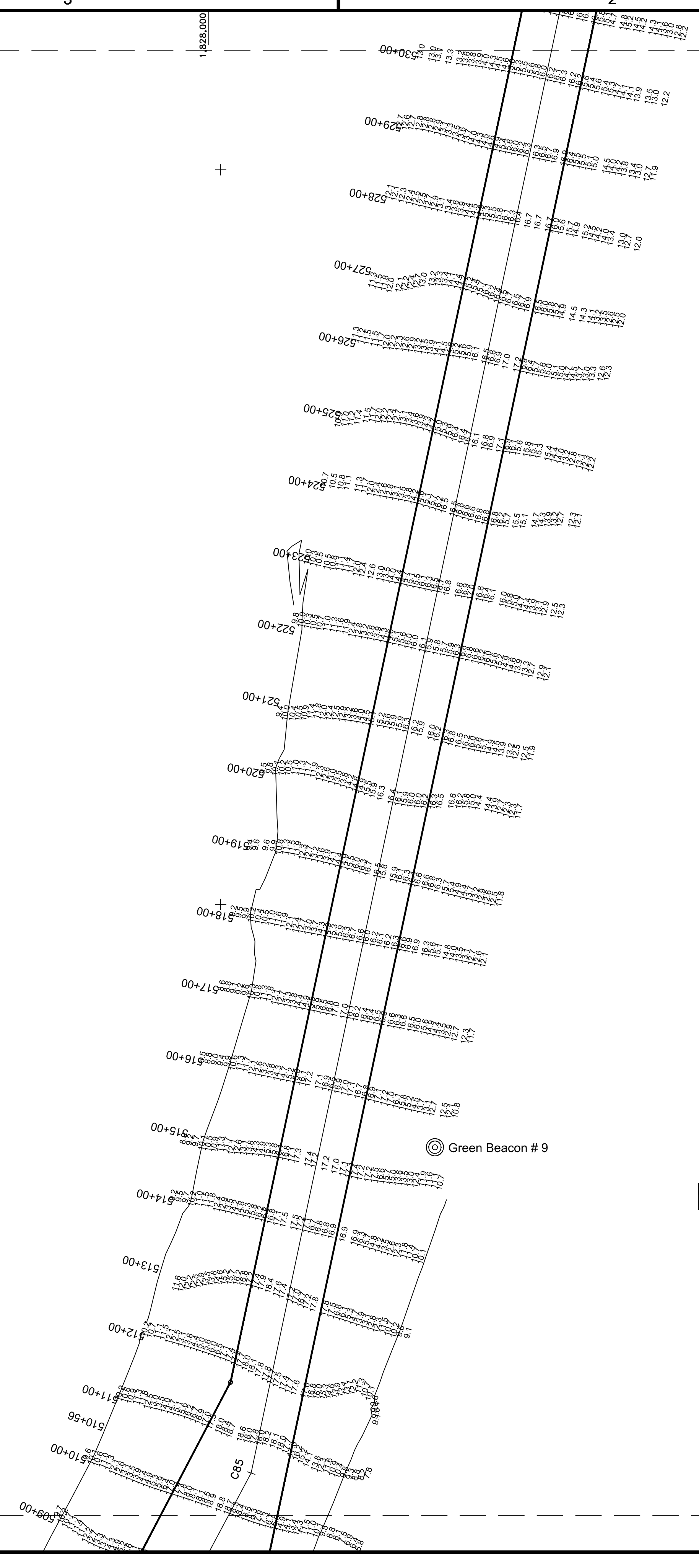


PRELIMINARY ISSUE
THIS PLAN ISSUED FOR
ADVANCE INFORMATION ONLY



MATCHLINE - SHEET 19

MATCHLINE - SHEET 17




US Army Corps
of Engineers
San Francisco District
1455 Market Street
San Francisco, CA 94103

Mark	Description	Date	Appr.

SUBMITTED:	PDT	CHECKED BY:	PDT	DRAWN BY:	PDT
	Hydro Survey Team Leader				
APPROVAL RECOMMENDED:		DATE:	SHEET NO.	DRAWING NO.	
		04/19/2012	1 OF 24	50	2
APPROVED:		PREPARED UNDER THE DIRECTION OF			
		TORREY A. DICIRO			
		LT. COLONEL, C.E., DISTRICT ENGINEER			

CALIFORNIA
NAPA COUNTY
NAPA RIVER
CONDITION SURVEY
3-7 & 12, 17 & 19 APRIL 2012

Sheet
reference
number
C18