

Angle Point	Easting	Northing
01	5744730.44	2188267.07
02	5746053.05	2189236.75
03	5746208.34	2189220.71
04	5746292.32	2189126.69
05	5746347.28	2188955.67
06	5746229.14	2187718.40
07	5746113.05	2187332.43
08	5745576.36	2186366.59
09	5745681.26	2186308.31
10	5745933.62	2186763.61
11	5745930.76	2186796.50
12	5746305.89	2187473.23
13	5746485.30	2189354.27
14	5746243.85	2189624.61
15	5744612.19	2188428.36
C1	5744671.30	2188347.71
C2	5748148.59	2189431.30
C3	5746409.74	2189065.73
C4	5746320.29	2188146.52
C5	5746320.29	2188146.52
C6	5746257.75	2187489.89
C7	5745620.55	2186342.55

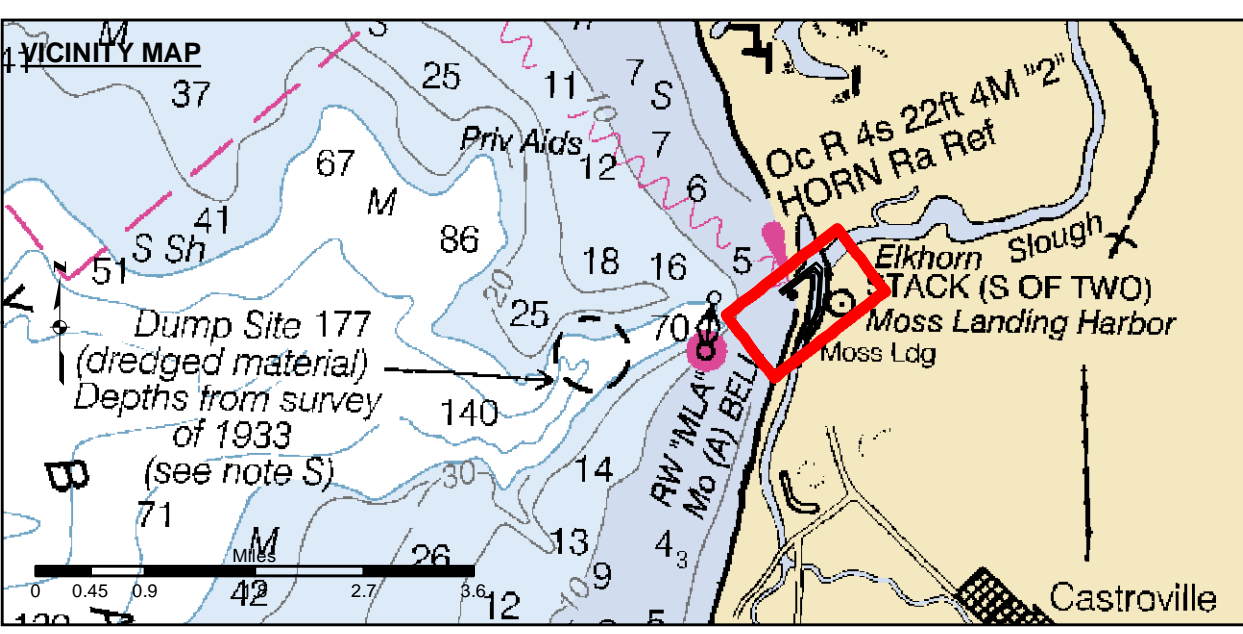
**US Army Corps of Engineers**  
 San Francisco District  
 450 Golden Gate  
 San Francisco, CA 94102

**DISCLAIMER**  
 The United States Government furnishes this information as a public service. It is not intended to be used for any purpose other than the intended purpose. The user assumes all liability for any use of this information. The United States Government makes no warranty, expressed or implied, concerning the accuracy, completeness, or reliability of the information. The user assumes all liability for any use of this information. The United States Government makes no warranty, expressed or implied, concerning the accuracy, completeness, or reliability of the information. The user assumes all liability for any use of this information.

Prepared Under the Direction of <b>JOHN D. CUNNINGHAM</b> LT COLONEL, C.E., DISTRICT ENGINEER	Chart Date: Jan 19, 2021
Submitted: Hydro Survey Team Leader	Designed by: PDT
Recommended: Chief, Hydro Survey Section	Plotted by: PDT
Approved: Chief, Construction Branch	Checked by: PDT
	Drawn by: PDT

**MONTEREY COUNTY**  
 CALIFORNIA  
**MOSS LANDING**  
 POST-DREDGE SURVEY  
 15 JANUARY 2021

**Sheet Reference Number**  
 1 of 1



Federal Navigation Channel	Beacon, General	<b>Contours</b>
Shoaling Area	Obstruction Point	
Placement Area	Navigation Buoy	-15
Anchorage Area	Navigation Buoy	-14
Wreck Area	Shoalest Sounding*	-13
Submerged Wreck		-12
Angle Point		-11

**NOTES:**  
 DRAWING NOT TO BE USED FOR NAVIGATION. ONLY CHANNEL CONDITION AT DATE OF SURVEY. THE LOCATION OF ALL NAVIGATION AIDS ARE BASED ON INFORMATION PROVIDED BY THE U.S. COAST GUARD. BUOY LOCATIONS REPRESENT THE POSITION OF THE SINKER ONLY.  
 INFORMATION DEPICTED ON THIS MAP REPRESENTS THE RESULTS OF SURVEYS MADE ON THE DATES INDICATED AND CAN ONLY BE CONSIDERED AS INDICATING THE GENERAL CONDITIONS AT THAT TIME.  
 SURVEYED BY THE CORPS OF ENGINEERS.  
 \*SHOALEST SOUNDING PER QUARTER PER REACH

SOUNDINGS WERE TAKEN BY FATHOMETER AND ARE SHOWN TO THE NEAREST TENTH OF A FOOT. SOUNDINGS ARE BASED ON THE DATUM OF MEAN LOWER LOW WATER AT THE LOCALITY. BASE MAPS ARE USDA NAIP 2010.  
 PLANE GRID, BEARING AND COORDINATES ARE BASED ON THE STATE OF CALIFORNIA COORDINATE SYSTEM, LAMBERT CONFORMAL PROJECTION, ZONE IV NAD 83, CALIFORNIA, AS DESCRIBED IN SPECIAL PUBLICATION NO. 235, PUBLISHED BY NATIONAL OCEAN SURVEY.  
 THE PROJECT DEPTH IS 15 FEET AT M.L.L.W.  
 VERTICAL CONTROL:  
 BENCHMARK: MLLW ELEV.  
 BM 3623 A 1976 NOS DISK, 8.46 MLLW  
 PUBLICATION DATE: 1/6/2007  
 TIDE GAUGE LOCATION: OLD HWY 1 BRIDGE ABUTMENT  
 HORIZONTAL CONTROL:  
 DGPS BEACON.