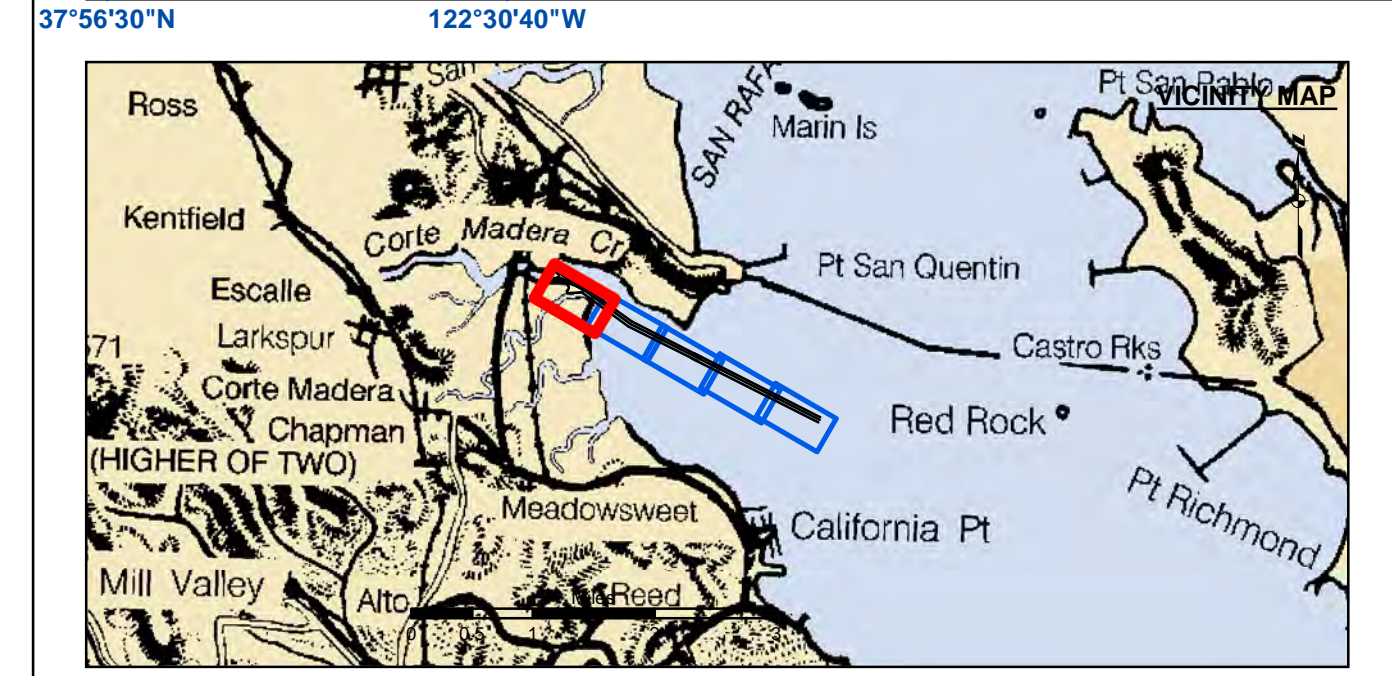


Angle Point	Easting	Northing
02	5982451.49	2172977.82
03	5982571.50	2172854.82
04	5982787.50	2172599.82
05	5983004.51	2172386.82
06	5983023.51	2172368.82
07	5983522.53	2172208.81
08	5983795.54	2172008.81
09	5983823.54	2172010.81
10	5985780.36	2170582.99
11	5993996.83	2166423.52
13	5982451.99	2172902.82
14	5982538.99	2172815.32
15	5982518.49	2172736.52
16	5982658.50	2172587.42
17	5982662.50	2172544.82
18	5982818.80	2172498.52
19	5982435.39	2172455.82
20	5982432.79	2172447.22
21	5982471.29	2172406.12
22	5982709.20	2172461.62
23	5982760.70	2172454.72
24	5982805.70	2172428.82
25	5982909.51	2172302.82
26	5983080.51	2172092.82
27	5983061.51	2172028.82
28	5983033.51	2171961.82
29	5982990.51	2171930.82
30	5982996.51	2171807.82
31	5983874.53	2171839.81
32	5983687.53	2171822.81
33	5985658.76	2170384.50
34	5993892.13	2166216.52
C01	5982979.38	2172328.56
C02	5983018.81	2172283.62
C03	5983359.11	2172114.22
C04	5983755.50	2171916.80
C05	5985719.55	2170483.75
C06	5986755.89	2168946.66
C07	5993944.49	2166320.03



	Federal Navigation Channel		Beacon, General	<b>Contours</b>	
	Shoaling Area		Obstruction Point		
	Placement Area		Navigation Buoy		
	Anchorage Area		Navigation Buoy		
	Wreck Area		Shoalest Sounding*		
	Submerged Wreck				-13
	Angle Point				-12
					-11
					-10
					-9

**NOTES:**  
 DRAWING NOT TO BE USED FOR NAVIGATION. ONLY CHANNEL CONDITION AT DATE OF SURVEY.  
 THE LOCATION OF ALL NAVIGATION AIDS ARE BASED ON INFORMATION PROVIDED BY THE U.S. COAST GUARD. BUOY LOCATIONS REPRESENT THE POSITION OF THE SINKER ONLY.  
 SURVEYED BY THE CORPS OF ENGINEERS.  
 SOUNDINGS WERE TAKEN BY FATHOMETER AND ARE SHOWN TO THE NEAREST TENTH OF A FOOT.  
 SOUNDINGS ARE BASED ON THE DATUM OF MEAN LOWER LOW WATER AT THE LOCALITY.

PLANE GRID AND COORDINATES ARE BASED ON THE STATE OF CALIFORNIA COORDINATE SYSTEM, LAMBERT CONFORMAL PROJECTION, ZONE III NAD 83, CALIFORNIA, AS DESCRIBED IN SPECIAL PUBLICATION NO. 235, PUBLISHED BY NATIONAL OCEAN SURVEY.

PROJECT DEPTH:  
 TURNING BASIN -15 FT. AT M.L.L.W.  
 MAIN CHANNEL -13 FT. AT M.L.L.W.

SOUNDINGS ARE BASED ON THE TIDE GAUGE LOCATED AT SAN QUENTIN PRISON PARKING LOT & BERTH 1 AT LARKSPUR LANDING FERRY TERMINAL.

VERTICAL CONTROL  
 BENCHMARK '4874C' 1977 USC&GS DISK ELEV. 11.55 FT MLLW.  
 BENCHMARK '06' 1936 USC&GS DISK ELEV. 34.92 FT MLLW.

HORIZONTAL CONTROL  
 COAST GUARD D-BEACON

**US Army Corps of Engineers**  
 San Francisco District  
 450 Market Street  
 San Francisco, CA 94102

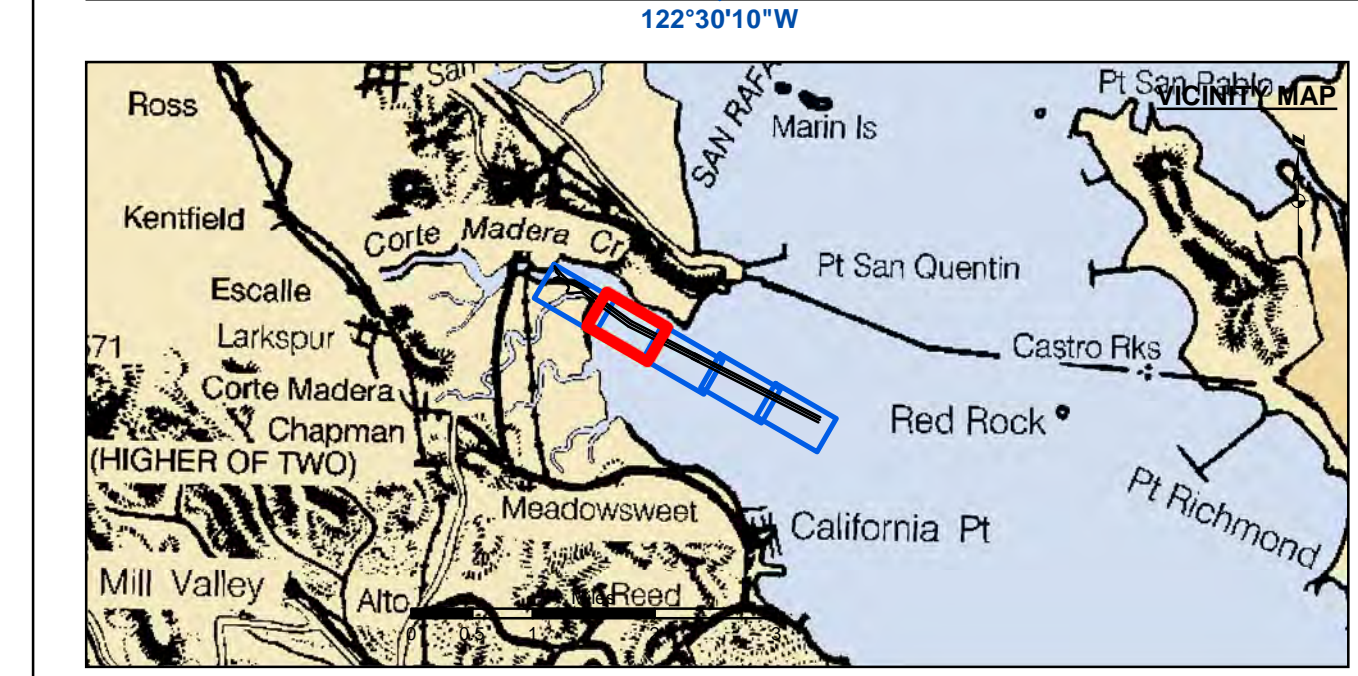
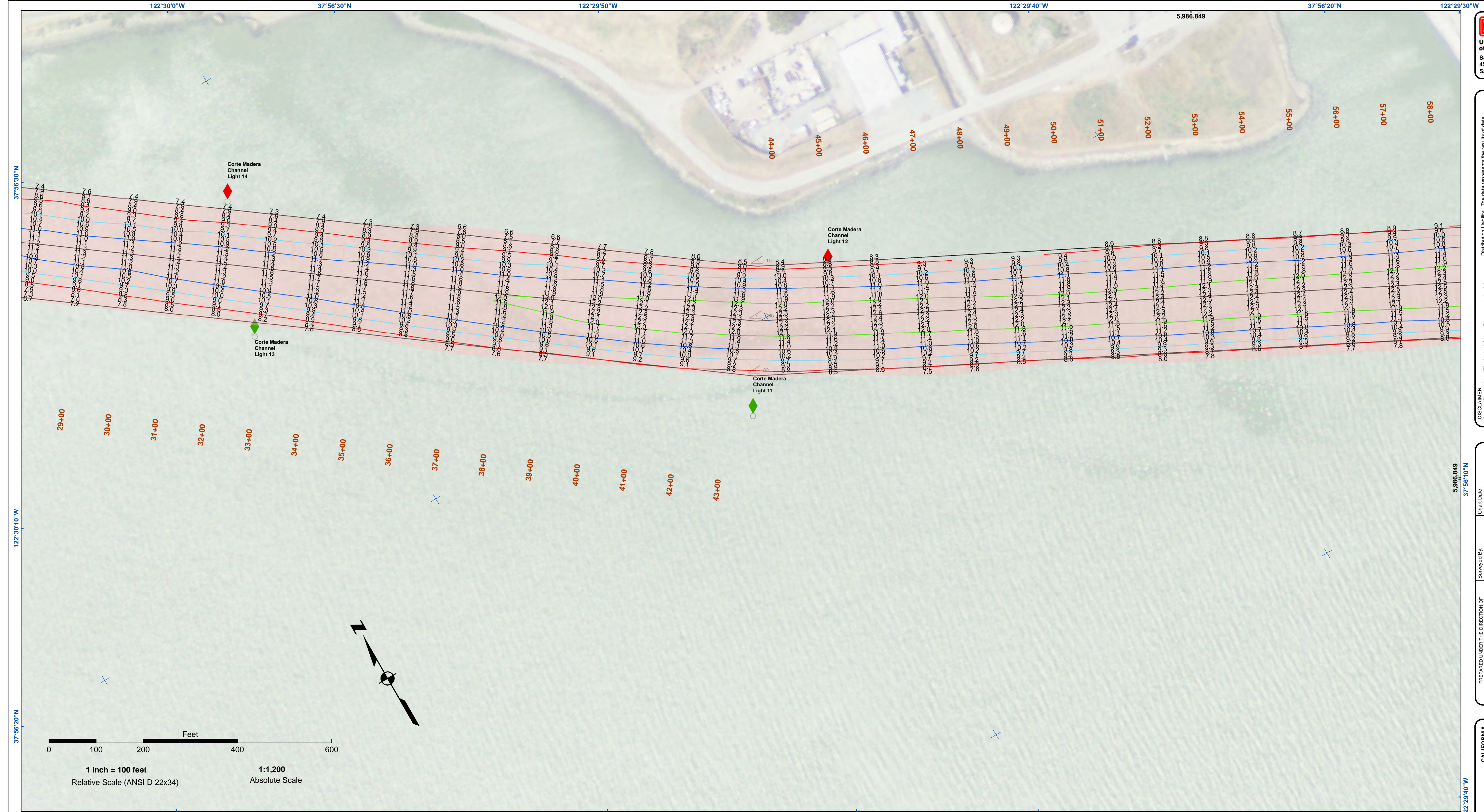
**DISCLAIMER:** The United States Government furnishes no warranty, expressed or implied, concerning the accuracy, completeness, or reliability of the data furnished. The United States shall be under no liability whatsoever to any person by reason of any use made thereof. These data belong to the Government. Therefore the Government provided data. The recipient may not transfer these data to others without also transferring this Disclaimer.

**Distribution Liability:** The data represents the results of data collection/processing for a specific US Army Corps of Engineers activity and indicates the general existing conditions. The user is responsible for the results of any of the application of the data for other than its intended purpose.

Prepared Under the Direction of <b>JOHN D. CUNNINGHAM</b> LT COLONEL, C.E. DISTRICT ENGINEER	Chart Date: Jul 18, 2019
Submitted: Hydro Survey Team Leader	Designed by: PDT
Recommended: Chief, Hydro Survey Section	Drawn by: PDT
Approved: Chief, Construction Branch	

CALIFORNIA  
 MARIN COUNTY  
**LARKSPUR FERRY TERMINAL**  
 CONDITION SURVEY  
 11 JULY 2019

**Sheet Reference Number**  
 1 of 5



	Federal Navigation Channel		Beacon, General	<b>Contours</b>	
	Shoaling Area		Obstruction Point		
	Placement Area		Navigation Buoy		
	Anchorage Area		Navigation Buoy		
	Wreck Area		Shoalest Sounding*		
	Submerged Wreck				-13
	Angle Point				-12
					-11
					-10
					-9

**NOTES:**  
 DRAWING NOT TO BE USED FOR NAVIGATION. ONLY CHANNEL CONDITION AT DATE OF SURVEY.  
 THE LOCATION OF ALL NAVIGATION AIDS ARE BASED ON INFORMATION PROVIDED BY THE U.S. COAST GUARD. BUOY LOCATIONS REPRESENT THE POSITION OF THE SINKER ONLY.  
 SURVEYED BY THE CORPS OF ENGINEERS.  
 SOUNDINGS WERE TAKEN BY FATHOMETER AND ARE SHOWN TO THE NEAREST TENTH OF A FOOT.  
 SOUNDINGS ARE BASED ON THE DATUM OF MEAN LOWER LOW WATER AT THE LOCALITY.

PLANE GRID AND COORDINATES ARE BASED ON THE STATE OF CALIFORNIA COORDINATE SYSTEM, LAMBERT CONFORMAL PROJECTION, ZONE III NAD 83, CALIFORNIA, AS DESCRIBED IN SPECIAL PUBLICATION NO. 235, PUBLISHED BY NATIONAL OCEAN SURVEY.

PROJECT DEPTH:  
 TURNING BASIN -15 FT. AT M.L.L.W.  
 MAIN CHANNEL -13 FT. AT M.L.L.W.

SOUNDINGS ARE BASED ON THE TIDE GAUGE LOCATED AT SAN QUENTIN PRISON PARKING LOT & BERTH 1 AT LARKSPUR LANDING FERRY TERMINAL.

VERTICAL CONTROL  
 BENCHMARK '4874C' 1977 USC&GS DISK ELEV. 11.55 FT MLLW.  
 BENCHMARK '06' 1936 USC&GS DISK ELEV. 34.92 FT MLLW.

HORIZONTAL CONTROL  
 COAST GUARD D-BEACON

**US Army Corps of Engineers**  
 San Francisco District  
 450 Market Street  
 San Francisco, CA 94102

**DISCLAIMER:** The United States Government furnishes no warranties, expressed or implied concerning the accuracy, completeness, or reliability of the information and the data furnished. The United States shall be under no liability whatsoever to any person by reason of any use made thereof. These data belong to the Government. Therefore the recipient may not transfer these data to others without also transferring this Disclaimer.

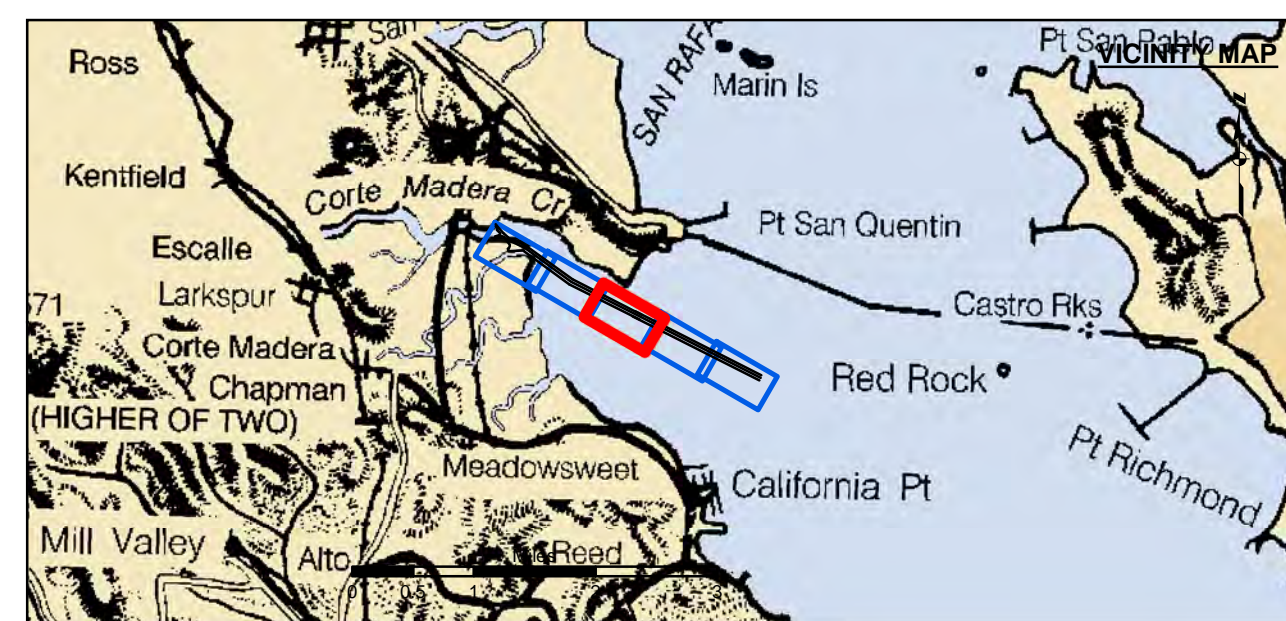
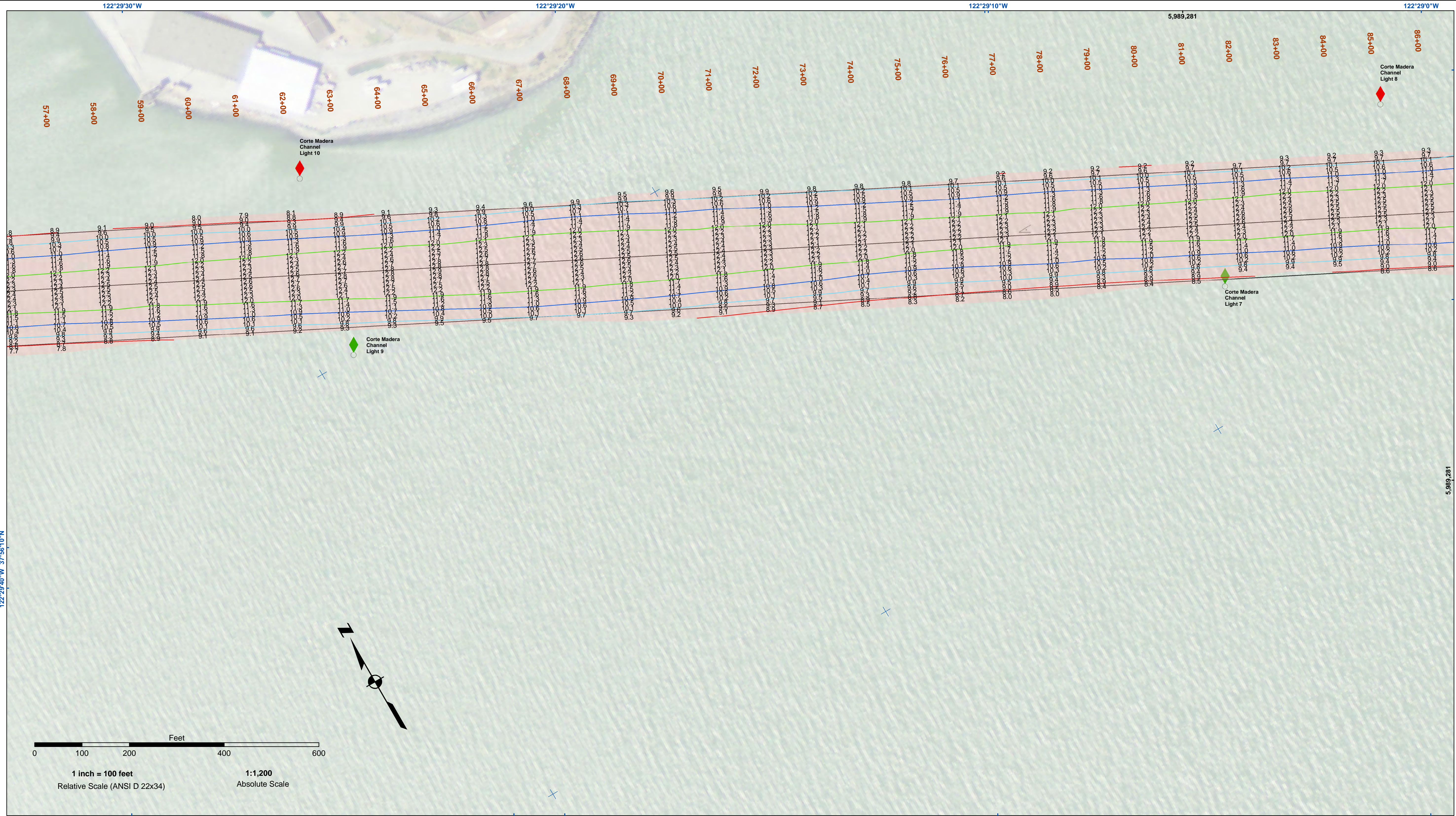
**Access Constraints:** The United States Government makes no warranties, expressed or implied concerning the accuracy, completeness, or reliability of the information and the data furnished. The United States shall be under no liability whatsoever to any person by reason of any use made thereof. These data belong to the Government. Therefore the recipient may not transfer these data to others without also transferring this Disclaimer.

**Distribution Liability:** The data represents the results of data collection/processing for a specific US Army Corps of Engineers activity and indicates the general existing conditions. Engineers activity and indicates the general existing conditions. The user is responsible for the results of any of the application of the data for other than its intended purpose.

Prepared Under the Direction of <b>JOHN D. CUNNINGHAM</b> LT COLONEL, C.E. DISTRICT ENGINEER	Chart Date: Jul 18, 2019
Submitted: Hydro Survey Team Leader	Designed by: PDT
Recommended by: Chief, Hydro Survey Section	Plotted by: PDT
Approved: Chief, Construction Branch	Checked by: PDT
	Drawn by: PDT

CALIFORNIA  
 MARIN COUNTY  
**LARKSPUR FERRY TERMINAL**  
 CONDITION SURVEY  
 11 JULY 2019

**Sheet Reference Number**  
 2 of 5



	Federal Navigation Channel		Beacon, General	<b>Contours</b>	
	Shoaling Area		Obstruction Point		
	Placement Area		Navigation Buoy		
	Anchorage Area		Navigation Buoy		
	Wreck Area		Shoalest Sounding*		
	Submerged Wreck				-13
	Angle Point				-12
					-11
					-10
					-9

**NOTES:**  
 DRAWING NOT TO BE USED FOR NAVIGATION. ONLY CHANNEL CONDITION AT DATE OF SURVEY.  
 THE LOCATION OF ALL NAVIGATION AIDS ARE BASED ON INFORMATION PROVIDED BY THE U.S. COAST GUARD. BUOY LOCATIONS REPRESENT THE POSITION OF THE SINKER ONLY.  
 SURVEYED BY THE CORPS OF ENGINEERS.  
 SOUNDINGS WERE TAKEN BY FATHOMETER AND ARE SHOWN TO THE NEAREST TENTH OF A FOOT.  
 SOUNDINGS ARE BASED ON THE DATUM OF MEAN LOWER LOW WATER AT THE LOCALITY.

PLANE GRID AND COORDINATES ARE BASED ON THE STATE OF CALIFORNIA COORDINATE SYSTEM, LAMBERT CONFORMAL PROJECTION, ZONE III NAD 83, CALIFORNIA, AS DESCRIBED IN SPECIAL PUBLICATION NO. 235, PUBLISHED BY NATIONAL OCEAN SURVEY.

PROJECT DEPTH:  
 TURNING BASIN -15 FT. AT M.L.L.W.  
 MAIN CHANNEL -13 FT. AT M.L.L.W.

SOUNDINGS ARE BASED ON THE TIDE GAUGE LOCATED AT SAN QUENTIN PRISON PARKING LOT & BERTH 1 AT LARKSPUR LANDING FERRY TERMINAL.

VERTICAL CONTROL  
 BENCHMARK '4874C' 1977 USC&GS DISK ELEV. 11.55 FT MLLW.  
 BENCHMARK '06' 1936 USC&GS DISK ELEV. 34.92 FT MLLW.

HORIZONTAL CONTROL  
 COAST GUARD D-BEACON



**DISCLAIMER:** The United States Government furnishes access to this information for the purpose of providing information and does not warrant, represent, or implied concerning the accuracy, completeness, or reliability of the information and the data furnished. The United States shall be under no liability whatsoever to any person by reason of any use made thereof. These data belong to the Government. Therefore the recipient may not transfer these data to others without also transferring this Disclaimer.

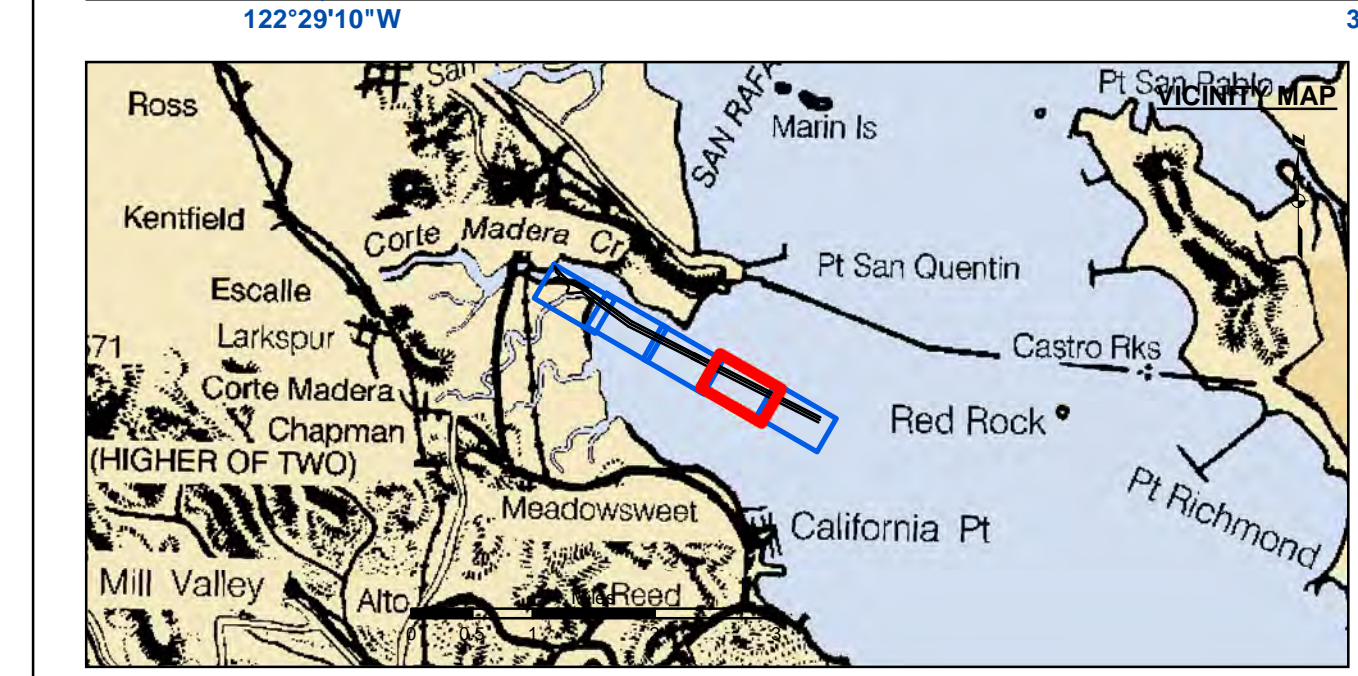
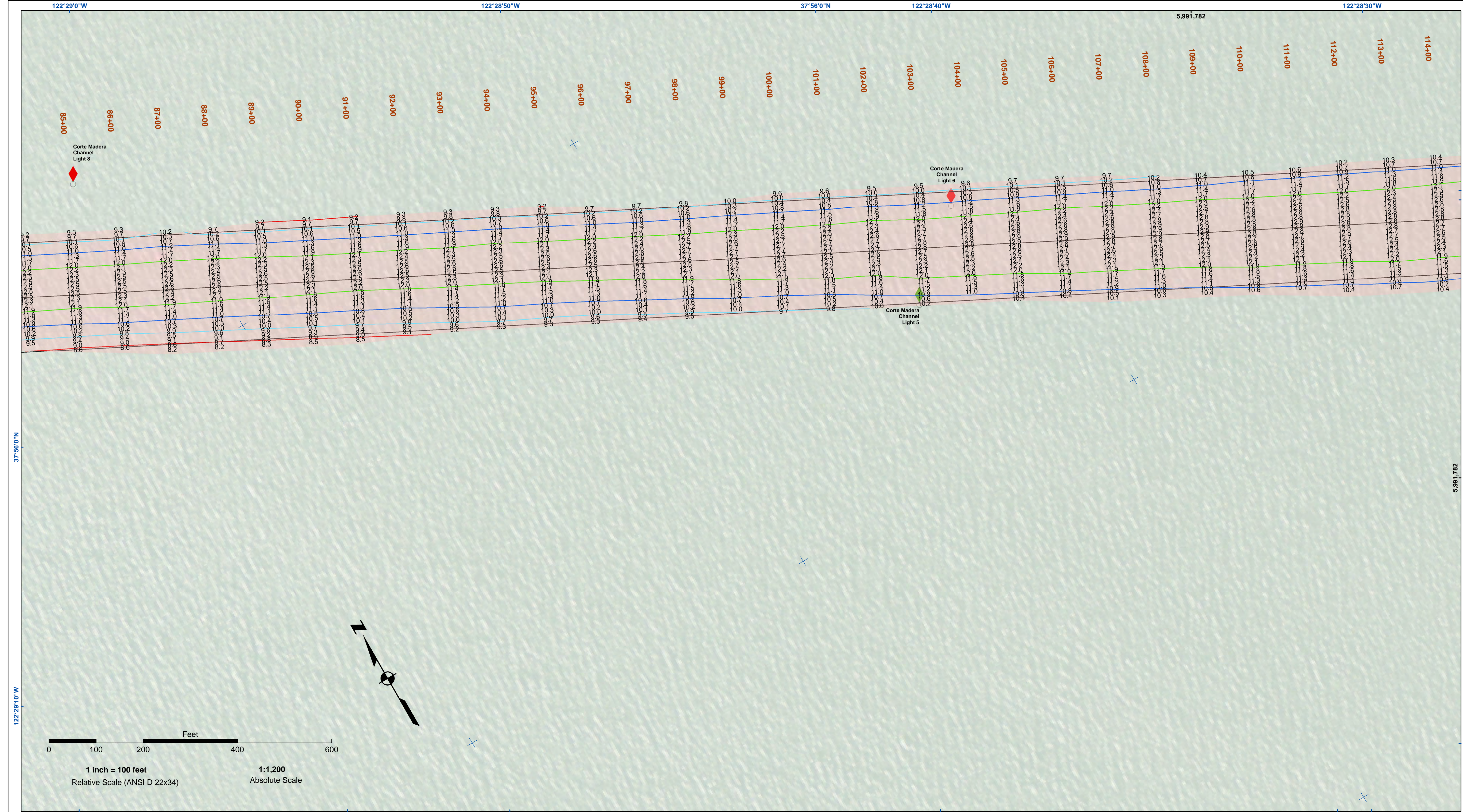
**Access Constraints:** The United States Government furnishes access to this information for the purpose of providing information and does not warrant, represent, or implied concerning the accuracy, completeness, or reliability of the information and the data furnished. The United States shall be under no liability whatsoever to any person by reason of any use made thereof. These data belong to the Government. Therefore the recipient may not transfer these data to others without also transferring this Disclaimer.

**Distribution Liability:** The data represents the results of data collection/processing for a specific US Army Corps of Engineers activity and indicates the general existing conditions. Engineers activity and indicates the general existing conditions. The user is responsible for the results of any of the application of the data for other than its intended purpose.

Prepared Under the Direction of <b>JOHN D. CUNNINGHAM</b> LT COLONEL, C.E. DISTRICT ENGINEER	Surveyed By:	Chart Date:
Submitted: Hydro Survey Team Leader	Plotted By: PDT	Jul 18, 2019
Recommended: Chief, Hydro Survey Section	Checked By: PDT	Designed by:
Approved: Chief, Construction Branch	Drawn by: PDT	

CALIFORNIA  
 MARIN COUNTY  
**LARKSPUR FERRY TERMINAL**  
 CONDITION SURVEY  
 11 JULY 2019

**Sheet Reference Number**  
 3 of 5



	Federal Navigation Channel		Beacon, General	<b>Contours</b>	
	Shoaling Area		Obstruction Point		
	Placement Area		Navigation Buoy		
	Anchorage Area		Navigation Buoy		
	Wreck Area		Shoalest Sounding*		
	Submerged Wreck				-13
	Angle Point				-12
					-11
					-10
					-9

**NOTES:**  
 DRAWING NOT TO BE USED FOR NAVIGATION. ONLY CHANNEL CONDITION AT DATE OF SURVEY.  
 THE LOCATION OF ALL NAVIGATION AIDS ARE BASED ON INFORMATION PROVIDED BY THE U.S. COAST GUARD. BUOY LOCATIONS REPRESENT THE POSITION OF THE SINKER ONLY.  
 SURVEYED BY THE CORPS OF ENGINEERS.  
 SOUNDINGS WERE TAKEN BY FATHOMETER AND ARE SHOWN TO THE NEAREST TENTH OF A FOOT.  
 SOUNDINGS ARE BASED ON THE DATUM OF MEAN LOWER LOW WATER AT THE LOCALITY.

PLANE GRID AND COORDINATES ARE BASED ON THE STATE OF CALIFORNIA COORDINATE SYSTEM, LAMBERT CONFORMAL PROJECTION, ZONE III NAD 83, CALIFORNIA, AS DESCRIBED IN SPECIAL PUBLICATION NO. 235, PUBLISHED BY NATIONAL OCEAN SURVEY.

PROJECT DEPTH:  
 TURNING BASIN -15 FT. AT M.L.L.W.  
 MAIN CHANNEL -13 FT. AT M.L.L.W.

SOUNDINGS ARE BASED ON THE TIDE GAUGE LOCATED AT SAN QUENTIN PRISON PARKING LOT & BERTH 1 AT LARKSPUR LANDING FERRY TERMINAL.

VERTICAL CONTROL  
 BENCHMARK '4874C' 1977 USC&GS DISK ELEV. 11.55 FT MLLW.  
 BENCHMARK '06' 1936 USC&GS DISK ELEV. 34.92 FT MLLW.

HORIZONTAL CONTROL  
 COAST GUARD D-BEACON



**DISCLAIMER:** The United States Government furnishes no warranties, expressed or implied concerning the accuracy, completeness, information and the data furnished. The United States shall be under no liability whatsoever to any person by reason of any use made thereof. These data belong to the Government. Therefore the recipient may not transfer these data to others without also transferring this Disclaimer.

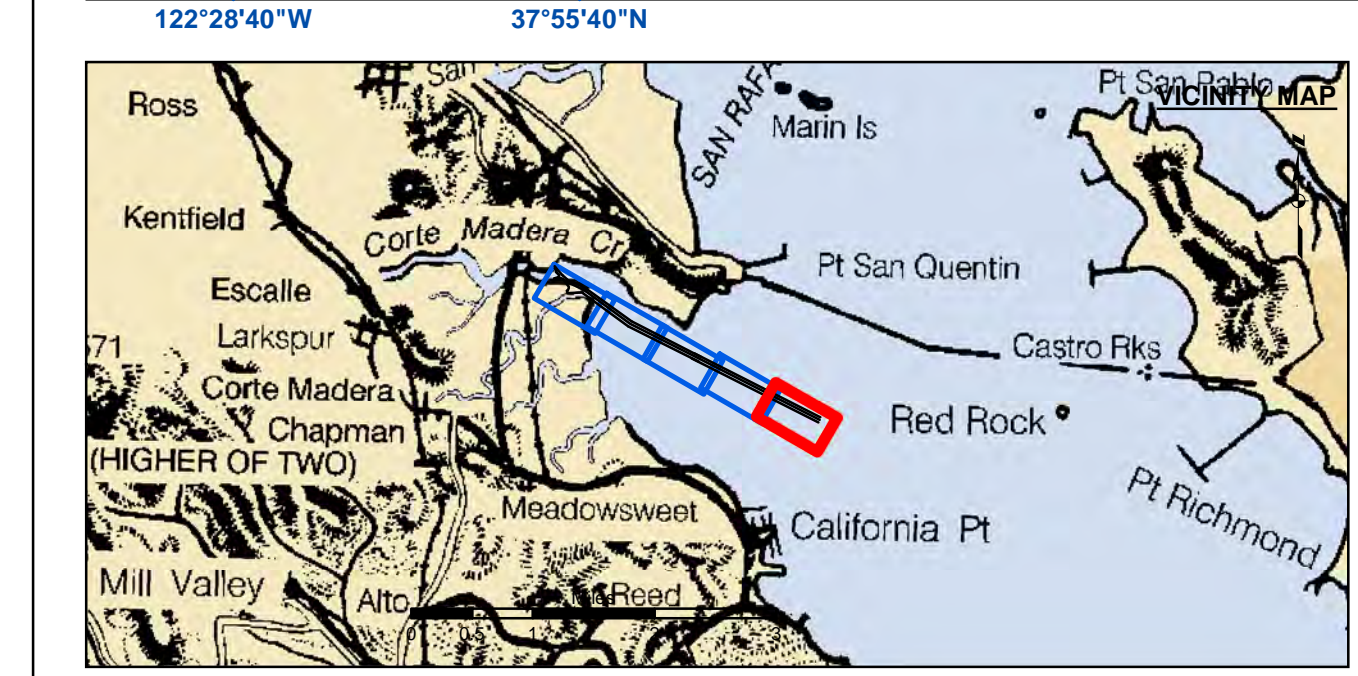
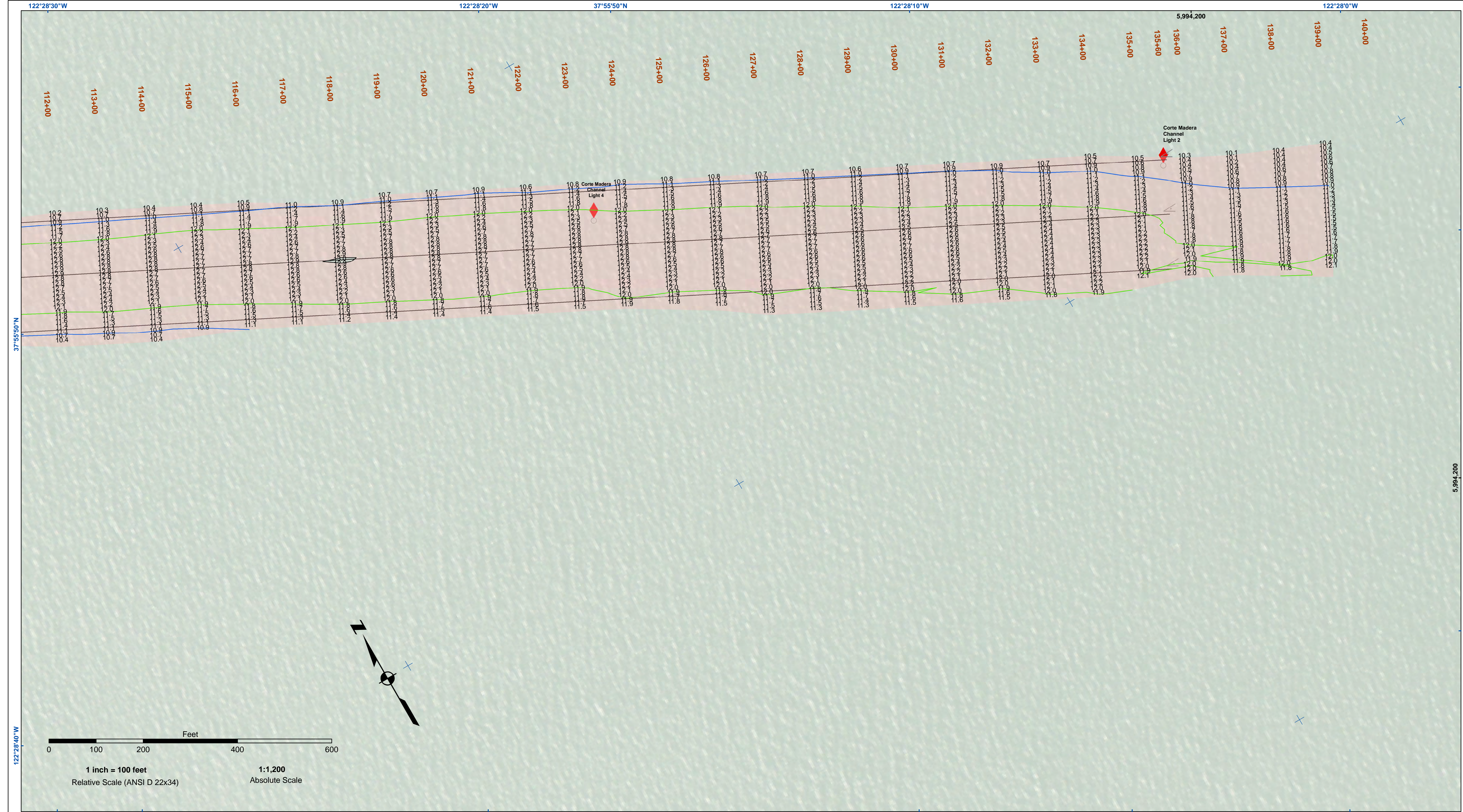
**Access Constraints:** The United States Government makes no warranties, expressed or implied concerning the accuracy, completeness, information and the data furnished. The United States shall be under no liability whatsoever to any person by reason of any use made thereof. These data belong to the Government. Therefore the recipient may not transfer these data to others without also transferring this Disclaimer.

**Distribution Liability:** The data represents the results of data collection/processing for a specific US Army Corps of Engineers activity and indicates the general existing conditions. The user is responsible for the results of any of the application of the data for other than its intended purpose.

PREPARED UNDER THE DIRECTION OF <b>JOHN D. CUNNINGHAM</b> LT COLONEL, C.E. DISTRICT ENGINEER	Surveyed By:	Chart Date:
Subject: Hydro Survey Team Leader	Plotted By: PDT	Jul 18, 2019
Recommended: Chief, Hydro Survey Section	Checked By: PDT	Designed by:
Approved: Chief, Construction Branch	Drawn by: PDT	Drawn by:

MARIN COUNTY  
**LARKSPUR FERRY TERMINAL**  
 CONDITION SURVEY  
 11 JULY 2019

**Sheet Reference Number**  
**4 of 5**



	Federal Navigation Channel		Beacon, General	<b>Contours</b>	
	Shoaling Area		Obstruction Point		
	Placement Area		Navigation Buoy		
	Anchorage Area		Navigation Buoy		
	Wreck Area		Shoalest Sounding*		
	Submerged Wreck				-13
	Angle Point				-12
					-11
					-10
					-9

**NOTES:**  
 DRAWING NOT TO BE USED FOR NAVIGATION. ONLY CHANNEL CONDITION AT DATE OF SURVEY.  
 THE LOCATION OF ALL NAVIGATION AIDS ARE BASED ON INFORMATION PROVIDED BY THE U.S. COAST GUARD. BUOY LOCATIONS REPRESENT THE POSITION OF THE SINKER ONLY.  
 SURVEYED BY THE CORPS OF ENGINEERS.  
 SOUNDINGS WERE TAKEN BY FATHOMETER AND ARE SHOWN TO THE NEAREST TENTH OF A FOOT.  
 SOUNDINGS ARE BASED ON THE DATUM OF MEAN LOWER LOW WATER AT THE LOCALITY.

PLANE GRID AND COORDINATES ARE BASED ON THE STATE OF CALIFORNIA COORDINATE SYSTEM, LAMBERT CONFORMAL PROJECTION, ZONE III NAD 83, CALIFORNIA, AS DESCRIBED IN SPECIAL PUBLICATION NO. 235, PUBLISHED BY NATIONAL OCEAN SURVEY.

PROJECT DEPTH:  
 TURNING BASIN -15 FT. AT M.L.L.W.  
 MAIN CHANNEL -13 FT. AT M.L.L.W.

SOUNDINGS ARE BASED ON THE TIDE GAUGE LOCATED AT SAN QUENTIN PRISON PARKING LOT & BERTH 1 AT LARKSPUR LANDING FERRY TERMINAL.

VERTICAL CONTROL  
 BENCHMARK '4874C' 1977 USC&GS DISK ELEV. 11.55 FT MLLW.  
 BENCHMARK '06' 1936 USC&GS DISK ELEV. 34.92 FT MLLW.

HORIZONTAL CONTROL  
 COAST GUARD D-BEACON

**US Army Corps of Engineers**  
 San Francisco District  
 450 Market Street  
 San Francisco, CA 94102

**DISCLAIMER:**  
 The United States Government furnishes this information as a service to the public and does not warrant, express or implied, the accuracy, completeness, or reliability of the information. The user is responsible for the results of any application of the data for other than its intended purpose. The data represents the results of data collection/processing/gauging during the survey. Engineers activity and indicate the general conditions. The user is responsible for the results of any application of the data for other than its intended purpose. The data represents the results of data collection/processing/gauging during the survey. Engineers activity and indicate the general conditions. The user is responsible for the results of any application of the data for other than its intended purpose.

PREPARED UNDER THE DIRECTION OF <b>JOHN D. CUNNINGHAM</b> LT COLONEL, C.E. DISTRICT ENGINEER	Surveyed By:	Chart Date:
	Plotted By:	Designed by:
	Checked By:	Drawn by:
	Approved:	

CALIFORNIA  
 MARIN COUNTY  
**LARKSPUR FERRY TERMINAL**  
 CONDITION SURVEY  
 11 JULY 2019

**Sheet Reference Number**  
 5 of 5