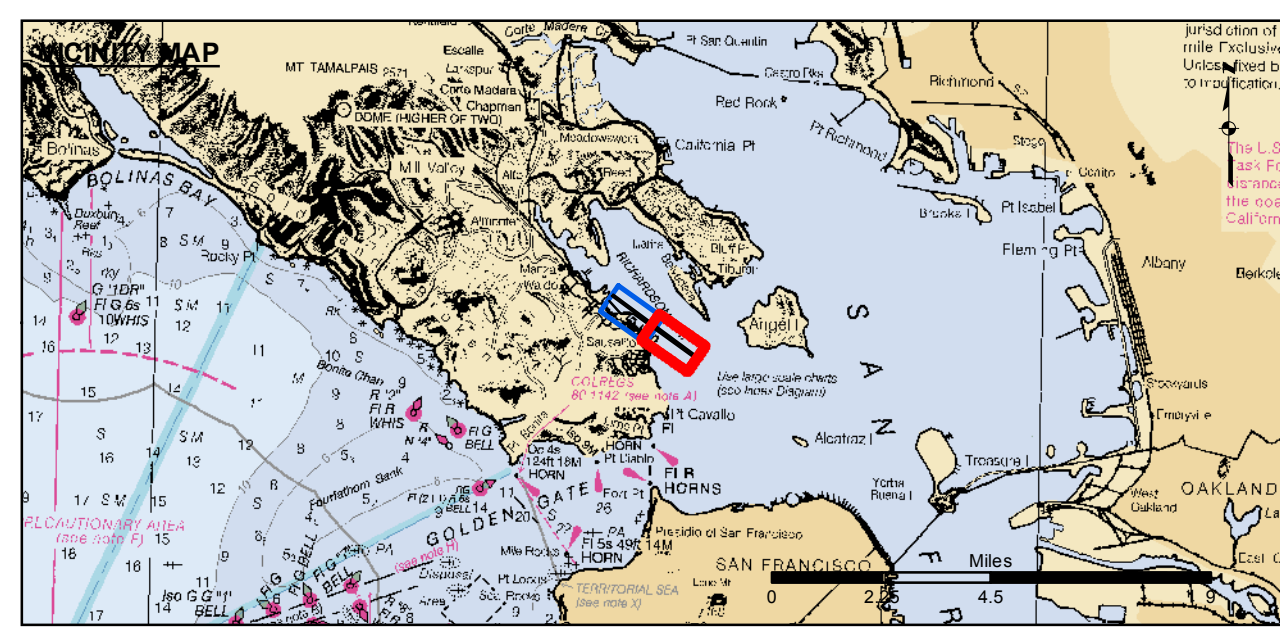


**PRELIMINARY ISSUE**  
THIS PLAN ISSUED FOR  
ADVANCE INFORMATION ONLY

Angle Point	Easting	Northing
01	5985648.89	2145393.09
02	5994684.09	2138810.59
03	5994707.39	2138568.09
04	5989054.39	2143415.09
05	5985782.39	2143390.09
06	5985527.39	2144770.09
C01	5985768.59	2145286.09
C02	5994795.69	2138689.29



- Federal Navigation Channel
  - Shoaling Areas
  - Placement Area
  - Anchorage Area
  - Wreck Area
  - Submerged Wreck
  - Angle Point
  - Beacon, General
  - Obstruction Point
  - Navigation Buoy
  - Navigation Buoy
  - Shoalest Sounding\*
- Contours**
- 20
  - 19
  - 18
  - 17
  - 16

**NOTES:**

DRAWING NOT TO BE USED FOR NAVIGATION, ONLY CHANNEL CONDITION AT DATE OF SURVEY. THE LOCATION OF ALL NAVIGATION AIDS ARE BASED ON INFORMATION PROVIDED BY THE U.S. COAST GUARD. BUOY LOCATIONS REPRESENT THE POSITION OF THE SINKER ONLY.

SURVEYED BY THE CORPS OF ENGINEERS.

INFORMATION DEPICTED ON THIS MAP REPRESENTS THE RESULTS OF SURVEYS MADE ON THE DATES INDICATED AND CAN ONLY BE CONSIDERED AS INDICATING THE GENERAL CONDITIONS AT THAT TIME.

SOUNDINGS ARE TAKEN BY FATHOMETER AND ARE SHOWN TO THE NEAREST FOOT AND TENTHS OF A FOOT. SOUNDINGS ARE BASED ON THE DATUM OF MEAN LOWER LOW WATER AT THE LOCALITY, NAVD 1988.

PLANE GRID AND COORDINATES ARE BASED ON THE STATE OF CALIFORNIA COORDINATE SYSTEM, LAMBERT CONFORMAL PROJECTION, ZONE III NAD 83, CALIFORNIA, AS DESCRIBED IN SPECIAL PUBLICATION NO. 235, PUBLISHED BY NATIONAL OCEAN SURVEY.

THE PROJECT DEPTH IS 20 FEET AT M.L.L.W.

SOUNDINGS ARE BASED ON THE TIDE GAUGE.

**US Army Corps of Engineers**  
San Francisco District  
1455 Market Street  
San Francisco, CA 94103

**DISCLAIMER:** The United States Government furnishes this information as it is received and does not express any opinion or implied warranty of accuracy, completeness, or reliability. The user is responsible for the results of any application of the data for other than its intended purpose. The data represents the results of data collection for a specific US Army Corps of Engineers activity and indicates the general existing conditions. The user is responsible for the results of any application of the data for other than its intended purpose.

Prepared Under the Direction of <b>JOHN C. MORROW</b> LT Colonel, C.E. District Engineer	Chart Date: Sep 22, 2014
Submitted by: Hydro Survey Team Leader	Designed by: PDT
Recommended by: Chief, Hydro Survey Station	Drawn by: PDT
Approved by: Chief, Construction Branch	

CALIFORNIA  
**MARINSHIP CHANNEL  
(RICHARDSON BAY)  
CONDITION SURVEY**  
21 September 2014

**Sheet Reference Number**  
2 of 2