

4

3

2

1

NAD 83 CHANNEL ANGLE POINTS		
∠ PT	X	Y
1	5994707.39	2138568.09
2	5988054.39	2143415.09
3	5986782.39	2143390.09
4	5985527.39	2144770.09
5	5984884.09	2138910.59
6	5985848.89	2145393.09

NAD 83 CENTERLINE ANGLE POINTS		
∠ PT	X	Y
C1	5994795.69	2138689.29
C2	5985768.59	2145266.09

PRELIMINARY ISSUE
THIS PLAN ISSUED FOR
ADVANCE INFORMATION ONLY


US Army Corps
of Engineers
San Francisco District
1455 Market Street
San Francisco, CA 94103

Mark	Description	Date	Appr.

SUBMITTED:	DESIGNED BY:	CHECKED BY:	DRAWN BY:
	Hydro Survey Team Leader	PPC	PPC
APPROVAL RECOMMENDED:	DATE:	SHEET NO.	DRAWING NO.
	3/31/2009	1 OF 2	133 2
APPROVED:	PREPARED UNDER THE DIRECTION OF		
	LAURENCE M. FARRELL		
Chief, Construction Branch	LT. COLONEL, C.E., DISTRICT ENGINEER		

NOTES:

DRAWING NOT TO BE USED AS NAVIGATION. ONLY CHANNEL CONDITION AT DATE OF SURVEY. THE LOCATION OF ALL NAVIGATION AIDS ARE BASED ON INFORMATION PROVIDED BY THE U.S. COAST GUARD. BUOY LOCATIONS REPRESENT THE POSITION OF THE SINKER ONLY.

SURVEYED BY THE CORPS OF ENGINEERS.

SOUNDINGS ARE TAKEN BY FATHOMETER AND ARE SHOWN TO THE NEAREST FOOT AND TENTHS OF A FOOT.

SOUNDINGS ARE BASED ON THE DATUM OF MEAN LOWER LOW WATER AT THE LOCALITY. NAVD 1988.

HORIZONTAL CONTROL:
COAST GUARD D-BEACON

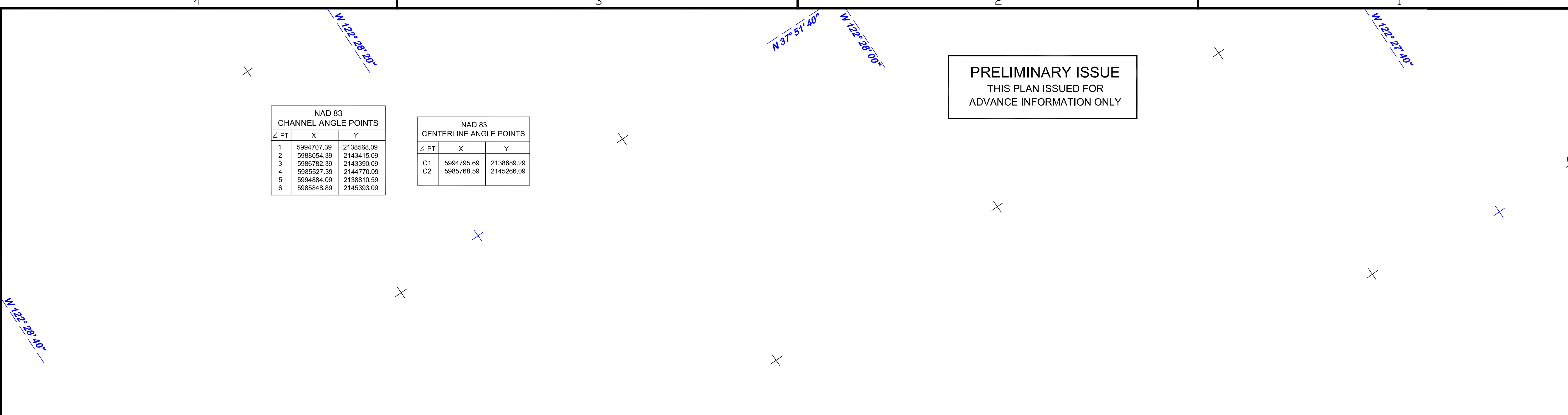
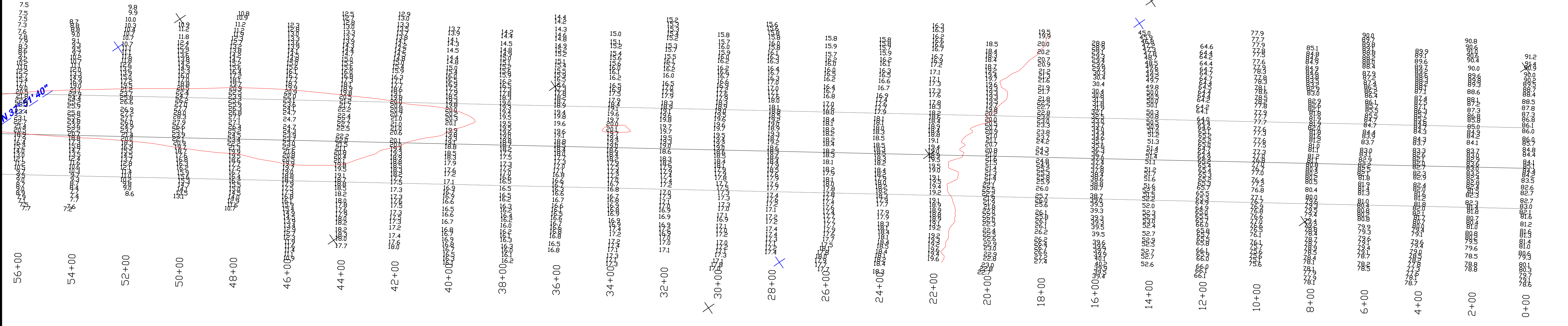
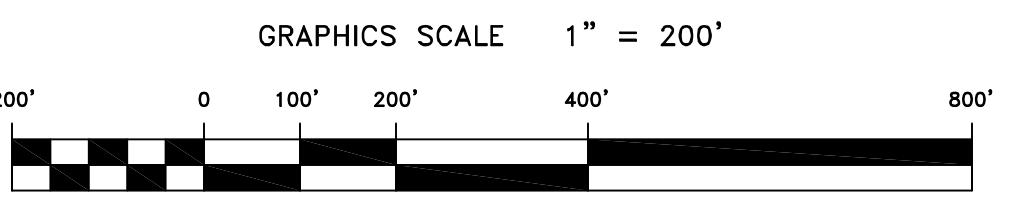
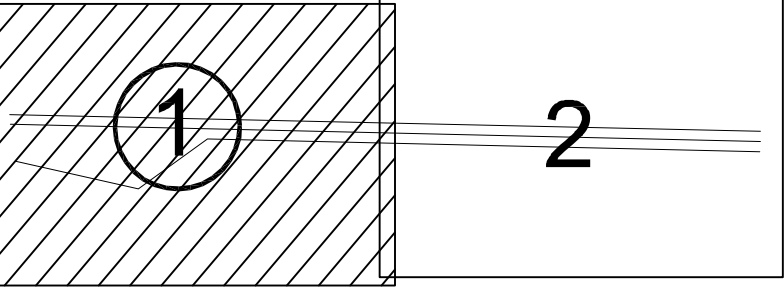
VERTICAL CONTROL:
B.M. 32 1948 USC&GS DISK 11.535 MLLW
Publication Date: 04/01/2004

PLANE GRID AND COORDINATES ARE BASED ON THE STATE OF CALIFORNIA COORDINATE SYSTEM, LAMBERT CONFORMAL PROJECTION, ZONE III NAD 83, CALIFORNIA, AS DESCRIBED IN SPECIAL PUBLICATION NO. 235, PUBLISHED BY THE NATIONAL OCEAN SURVEY.

INFORMATION DEPICTED ON THIS MAP REPRESENT THE RESULTS OF SURVEYS MADE ON THE DATES INDICATED AND CAN ONLY BE CONSIDERED AS INDICATING THE GENERAL CONDITIONS EXISTING AT THAT TIME.

PROJECT DEPTH IS 20 AT M.L.L.W.

SHEET INDEX



MARIN COUNTY CALIFORNIA
MARINSHIP CHANNEL
CONDITION SURVEY
26 & 27 MARCH 2009

Sheet reference number
C1

N 37° 51' 20"

W 122° 28' 20"

W 122° 28' 20"

N 37° 51' 00"

W 122° 28' 00"

N 37° 51' 20"

W 122° 28' 40"

N 37° 51' 20"

W 122° 27' 40"

N 37° 51' 40"

W 122° 28' 00"

W 122° 28' 40"

C

B

A