

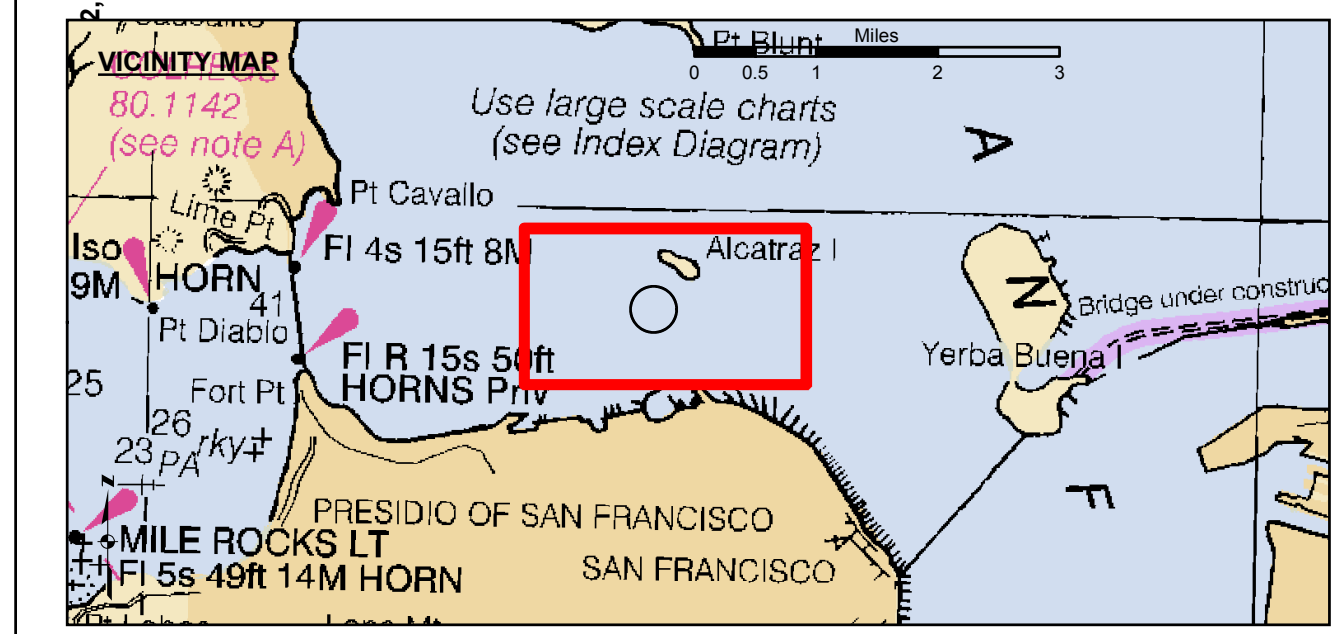
US Army Corps of Engineers
 San Francisco District
 1455 Market Street
 San Francisco, CA 94103

PRELIMINARY ISSUE
 THIS PLAN ISSUED FOR
 ADVANCE INFORMATION ONLY

DISCLAIMER
 The United States Government furnishes this information for informational purposes only. It is not intended for navigation. The user is responsible for the results of any application of this data for other than its intended purpose. The United States Government makes no warranty, expressed or implied, concerning the accuracy, completeness, or reliability of this information. The user is responsible for the results of any application of this data for other than its intended purpose. The United States Government makes no warranty, expressed or implied, concerning the accuracy, completeness, or reliability of this information. The user is responsible for the results of any application of this data for other than its intended purpose.

LAMBERT COORDINATES		
POINT	X	Y
U.S.G.S. MON. 57 ELEV. - 14.00	6,005,367	2,123,290
TRANSAMERICA BUILDING	6,011,912	2,117,586
ALCATRAZ DISPOSAL SITE - (SF-11)		
1,000 FT. RADIUS	6,005,935	2,127,235
ALCATRAZ LIGHT	6,006,552	2,129,010
ALCATRAZ BUOY	6,006,367	2,127,186

Prepared Under the Direction of JOHN C. MORROW LT COLONEL, C.E. DISTRICT ENGINEER	Surveyed By:	Chart Date:
Submitted: Hydro Survey Team Leader	Plotted By: PDT	Sep 11, 2014
Recommended: Chief, Hydro Survey Section	Checked By: PDT	Designed by:
Approved: Chief, Construction Branch	Drawn by: PDT	



- Federal Navigation Channel
- Shoaling Area
- Placement Area
- Anchorage Area
- Wreck Area
- Submerged Wreck
- Zone III Angle Points
- Beacon, General
- Obstruction Point
- Navigation Buoy
- Navigation Buoy
- Shoalest Sounding*
- Contour Lines Every 10' -20' to -120'

NOTES:
 HORIZONTAL COORDINATE SYSTEM:
 NORTH AMERICAN DATUM OF 1983 (NAD83), PROJECTED TO THE STATE PLANE COORDINATE SYSTEM (SPCS), CALIFORNIA ZONE III. DISTANCE UNITS IN U.S. SURVEY FEET.

VERTICAL DATUM:
 SOUNDINGS ARE SHOWN IN FEET AND INDICATE DEPTHS BELOW MEAN LOWER LOW WATER.

THE INFORMATION DEPICTED ON THIS MAP REPRESENTS THE RESULTS OF A SURVEY CONDUCTED ON THE DATE INDICATED AND CAN ONLY BE CONSIDERED TO REPRESENT THE GENERAL CONDITION EXISTING AT THAT TIME.

BASE MAPS ARE USDA NAIP 2010.

*SHOALEST SOUNDING PER QUARTER PER REACH

DRAWING NOT TO BE USED FOR NAVIGATION. ONLY CHANNEL CONDITION AT DATE OF SURVEY. THE LOCATION OF ALL NAVIGATION AIDS ARE BASED ON INFORMATION PROVIDED BY THE U.S. COAST GUARD. BUOY LOCATIONS REPRESENT THE POSITION OF THE SINKER ONLY. SOUNDINGS WERE TAKEN BY FATHOMETER AND ARE SHOWN TO THE NEAREST TENTH OF A FOOT. SOUNDINGS ARE BASED ON THE DATUM OF MEAN LOWER LOW WATER AT THE LOCALITY.

SURVEYED BY THE CORPS OF ENGINEERS.

THE PROJECT DEPTH IS -35 FEET AT MLLW.

PLANE GRID AND COORDINATES ARE BASED ON LAMBERT PROJECTION, NAD 83, ZONE III CALIFORNIA AS DESCRIBED IN SPECIAL PUBLICATION NO. 235, PUBLISHED BY THE NATIONAL OCEAN SURVEY.

HORIZONTAL GPS CONTROL:
 COAST GUARD D-BEACON

VERTICAL CONTROL:
 BENCHMARK '5056 C' (1976) USC&GS DISK, ELEV. 34.75 MLLW, NAVD 88 DATUM TIDE GAUGE LOCATED AT POINT PINOLE PIER.

BENCHMARK '5218 L' (1976) USC&GS DISK, ELEV. 11.00 MLLW, NAVD 88 DATUM TIDE GAUGE LOCATED AT MARE ISLAND PIER 35.

CALIFORNIA
 SAN PABLO BAY
ALCATRAZ DISPOSAL SITE -SF11
 CONDITION SURVEY
 09 SEPTEMBER 2014

Sheet Reference Number 1 of 1