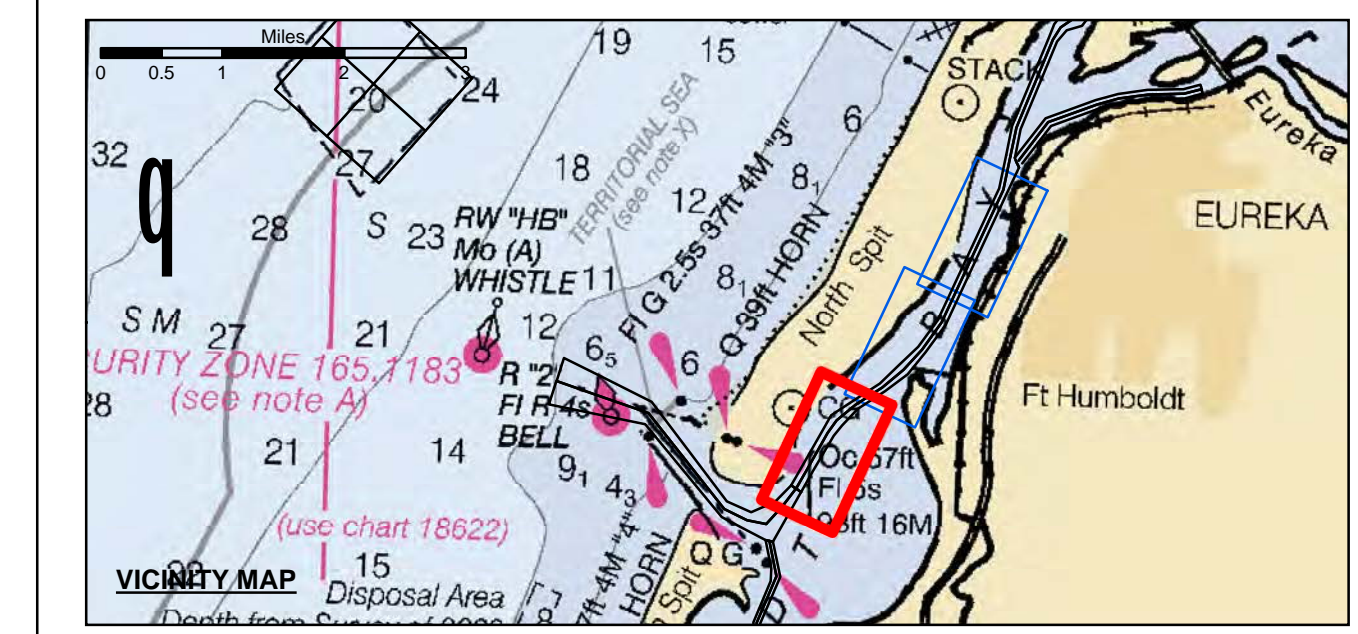


Angle Point	Easting	Northing
06	5945167.02	2166658.81
07	5945752.39	2166911.73
08	5946464.09	2167631.33
09	5946953.59	2168479.53
10	5947831.59	2170042.13
11	5948193.09	2170679.33
12	5949124.59	2171287.03
13	5950308.09	2172059.13
14	5951141.79	2172853.23
15	5951976.39	2173648.23
16	5952816.79	2174408.43
17	5953484.79	2180520.43
28	5956165.60	2181942.62
29	5956348.68	2181424.84
30	5955866.99	2180393.43
31	5953163.09	2174604.63
32	5952300.39	2173413.53
33	5951516.79	2172459.53
34	5950526.69	2171724.13
35	5949343.09	2170952.03
36	5948674.79	2170232.13
37	5948301.49	2169794.33
38	5947388.59	2168234.23
39	5946907.49	2167381.23
40	5946431.39	2166537.23
C07	5946085.69	2166728.23
C08	5946686.99	2167509.93
C09	5947166.09	2168359.43
C10	5948049.99	2169917.43
C11	5948433.69	2170455.43
C12	5949233.79	2171119.43
C13	5950417.39	2171981.43
C14	5951329.29	2172856.43
C15	5952138.39	2173530.43
C16	5952989.89	2174706.43
C17	5953671.89	2180441.43

US Army Corps of Engineers
 San Francisco District
 1455 Market Street
 San Francisco, CA 94103

DISCLAIMER
 The United States Government furnishes this information for the general information of the user. The user assumes all responsibility for the use of the information. The United States Government makes no warranty, expressed or implied, concerning the accuracy, completeness, or timeliness of the information. The user shall not hold the United States Government liable for any damages, including consequential damages, arising from the use of the information. The user shall not hold the United States Government liable for any damages, including consequential damages, arising from the use of the information. The user shall not hold the United States Government liable for any damages, including consequential damages, arising from the use of the information.

Prepared Under the Direction of JOHN C. MORROW LT Colonel, C.E., District Engineer	Surveyed By: PDT	Chart Date: Mar 07, 2017
Submitted: Hydro Survey Team Leader	Plotted By: PDT	Designed by: PDT
Recommended: Chief, Hydro Survey Section	Checked By: PDT	Drawn by: PDT
Approved: Chief, Construction Branch		



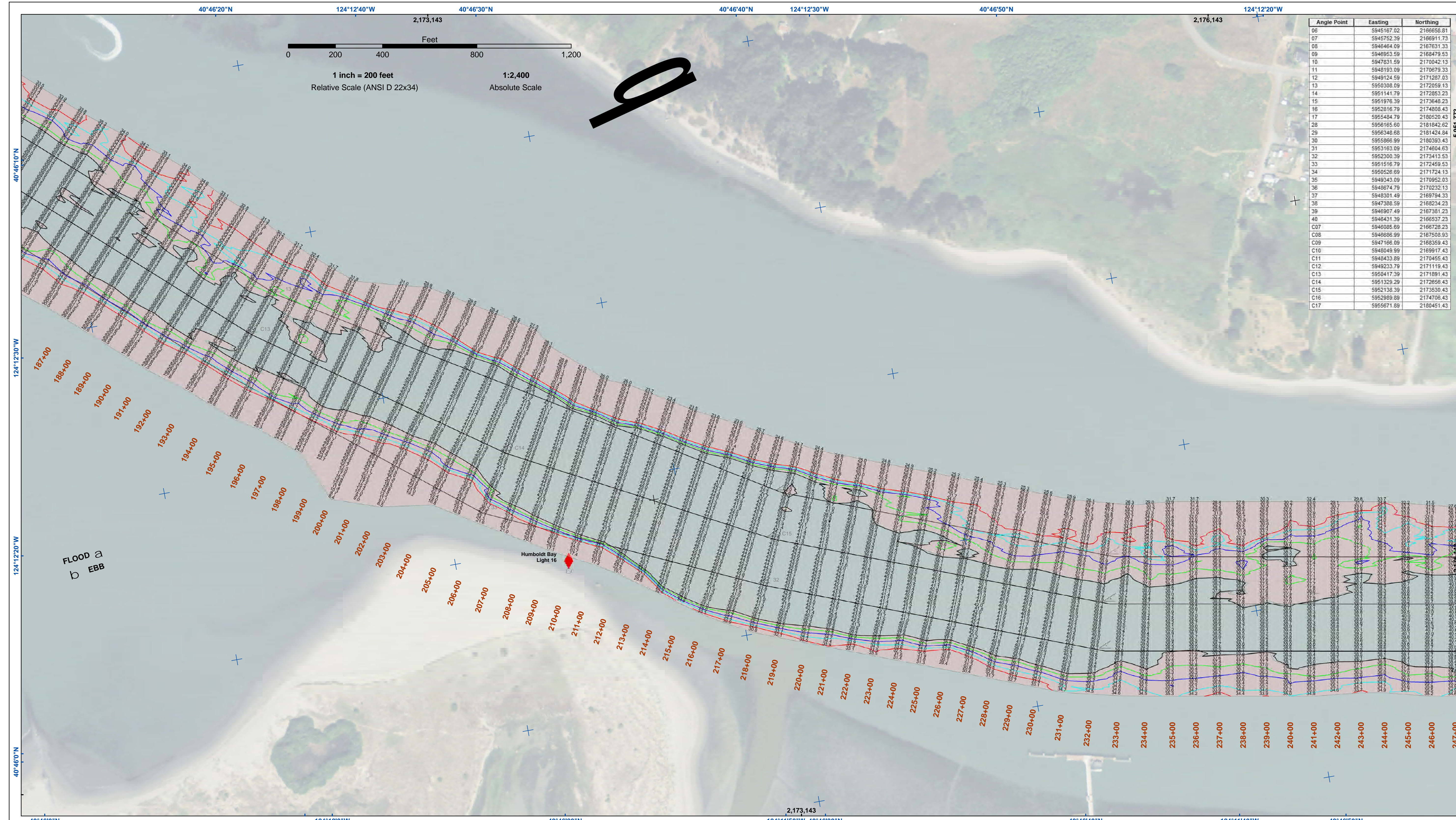
Federal Navigation Channel	Beacon, General	Contours
Shoaling Area	Obstruction Point	-38
Placement Area	Navigation Buoy	-37
Anchorage Area	Navigation Buoy	-36
Wreck Area	Navigation Buoy	-35
Submerged Wreck	Shoalest Sounding*	-34
Angle Point		

NOTES:
 DRAWINGS NOT TO BE USED AS NAVIGATION. ONLY CHANNEL CONDITION AT DATE OF SURVEY. THE LOCATION OF ALL NAVIGATION AIDS ARE BASED ON INFORMATION PROVIDED BY THE U.S. COAST GUARD. BUOY LOCATION REPRESENT THE POSITION OF THE SINKER ONLY.
 SURVEYED BY THE CORPS OF ENGINEERS.
 SOUNDINGS WERE TAKEN BY FATHOMETER AND ARE SHOWN TO THE NEAREST TENTHS OF A FOOT.
 SOUNDINGS ARE BASED ON THE DATUM OF MEAN LOWER LOW WATER AT THE LOCALITY.
 PLANE GRID AND COORDINATES ARE BASED ON THE STATE OF CALIFORNIA COORDINATE SYSTEM, LAMBERT CONFORMAL PROJECTION, ZONE 1 NAD 83, CALIFORNIA, AS DESCRIBED IN SPECIAL PUBLICATION NO. 235, PUBLISHED BY THE NATIONAL OCEAN SURVEY.
 PROJECT DEPTHS ARE AS FOLLOWS:
 BAR & ENTRANCE CHANNEL = 48 FEET
 NORTH BAY, SAMOA TO MILE 5.0 & = 38 FEET
 EUREKA CHANNEL, FIELDS LANDING CHANNEL & MILE 5.0 TO "N" STREET = 26 FEET

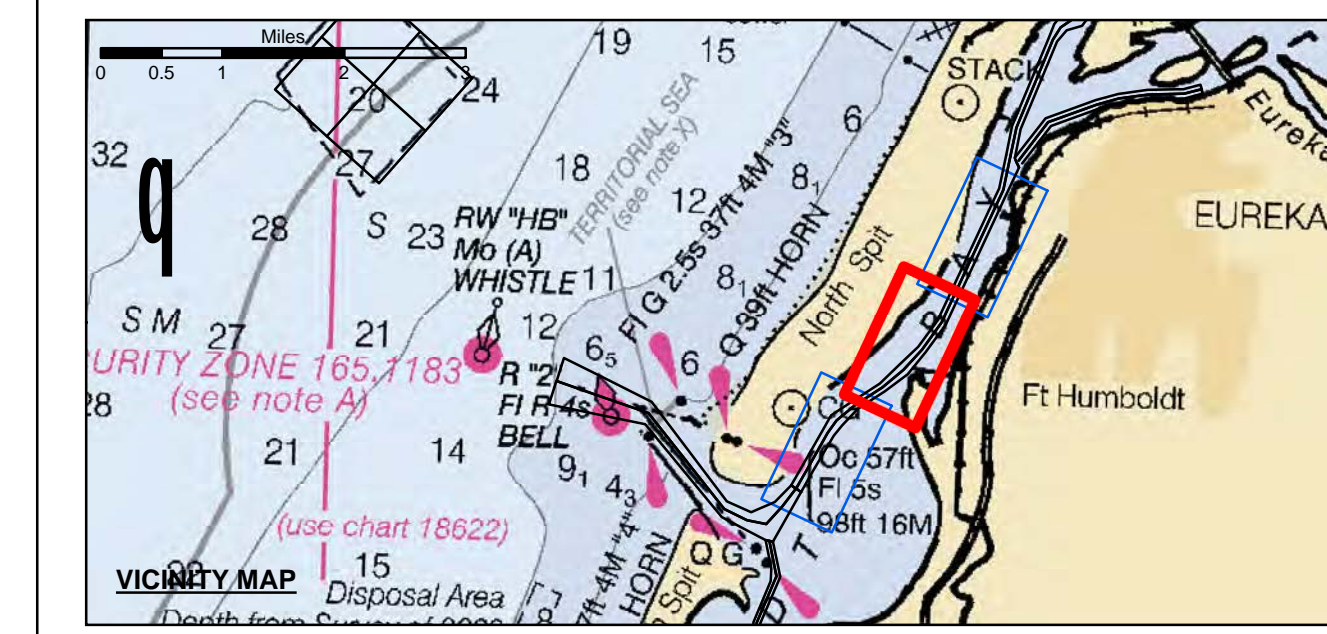
1:00 INDICATES THE NUMBER AND BEGINNING OF A LINE OF SOUNDINGS.
 SOUNDINGS ARE BASED ON TIDE GAUGES REFERENCED TO U.S.C. & G.S.
 Vertical and Horizontal Control:
 NOAA Station: 941 8767 - North Spit, CA
 Benchmark:
 NO 11 1940 (PID: LV0359)
 MLLW Elev: 4.251m
 Tides:
 RTK GPS, using GEOID12a and VDATUM
 RTK elevations calibrated at 10.0ft nail at Coast Guard Station Humboldt Bay
 Position:
 RTK Positions

HUMBOLDT COUNTY
HUMBOLDT BAY
NORTH BAY CHANNEL
 CONDITION SURVEY
 1-4 MARCH 2017

Sheet Reference Number
 1 of 3



Angle Point	Easting	Northing
06	5945167.02	2166658.81
07	5945752.39	2166911.73
08	5946464.09	2167631.33
09	5946953.59	2168479.53
10	5947831.59	2170042.13
11	5948193.09	2170679.33
12	5949124.59	2171287.03
13	5950308.09	2172059.13
14	5951141.79	2172853.23
15	5951976.39	2173648.23
16	5952816.79	2174408.43
17	5953484.79	2180520.43
28	5956165.00	2181942.62
29	5956348.68	2181424.84
30	5955866.99	2180393.43
31	5953163.09	2174604.63
32	5952300.39	2173413.53
33	5951516.79	2172459.53
34	5950526.69	2171724.13
35	5949343.09	2170952.03
36	5948674.79	2170232.13
37	5948301.49	2169794.33
38	5947388.59	2168234.23
39	5946907.49	2167381.23
40	5946431.39	2166537.23
C07	5946085.69	2166728.23
C08	5946686.99	2167509.93
C09	5947166.09	2168359.43
C10	5948049.99	2169917.43
C11	5948433.89	2170455.43
C12	5949233.79	2171119.43
C13	5950417.39	2171981.43
C14	5951329.29	2172856.43
C15	5952138.39	2173530.43
C16	5952989.89	2174706.43
C17	5953671.89	2180451.43



	Federal Navigation Channel		Beacon, General	Contours	
	Shoaling Area		Obstruction Point		-38
	Placement Area		Navigation Buoy		-37
	Anchorage Area		Navigation Buoy		-36
	Wreck Area		Shoalest Sounding*		-35
	Submerged Wreck				-34
	Angle Point				

NOTES:
 DRAWINGS NOT TO BE USED AS NAVIGATION. ONLY CHANNEL CONDITION AT DATE OF SURVEY. THE LOCATION OF ALL NAVIGATION AIDS ARE BASED ON INFORMATION PROVIDED BY THE U.S. COAST GUARD. BUOY LOCATION REPRESENT THE POSITION OF THE SINKER ONLY.
 SURVEYED BY THE CORPS OF ENGINEERS.
 SOUNDINGS WERE TAKEN BY FATHOMETER AND ARE SHOWN TO THE NEAREST TENTHS OF A FOOT.
 SOUNDINGS ARE BASED ON THE DATUM OF MEAN LOWER LOW WATER AT THE LOCALITY.
 PLANE GRID AND COORDINATES ARE BASED ON THE STATE OF CALIFORNIA COORDINATE SYSTEM, LAMBERT CONFORMAL PROJECTION, ZONE 11NAD 83, CALIFORNIA, AS DESCRIBED IN SPECIAL PUBLICATION NO. 235, PUBLISHED BY THE NATIONAL OCEAN SURVEY.
 PROJECT DEPTHS ARE AS FOLLOWS:
 BAR & ENTRANCE CHANNEL = 48 FEET
 NORTH BAY, SAMOIA TO MILE 5.0 & = 38 FEET
 EUREKA CHANNEL, FIELDS LANDING CHANNEL & MILE 5.0 TO "N" STREET = 26 FEET

1:00 INDICATES THE NUMBER AND BEGINNING OF A LINE OF SOUNDINGS.
 SOUNDINGS ARE BASED ON TIDE GAUGES REFERENCED TO U.S.C. & G.S.
 Vertical and Horizontal Control:
 NOAA Station: 941 8767 - North Spit, CA
 Benchmark:
 NO 11 1940 (PID: LV0359)
 MLLW Elev: 4.251m
 Tides:
 RTK GPS, using GEOID12a and VDATUM
 RTK elevations calibrated at 10.0ft nail at Coast Guard Station Humboldt Bay
 Position:
 RTK Positions

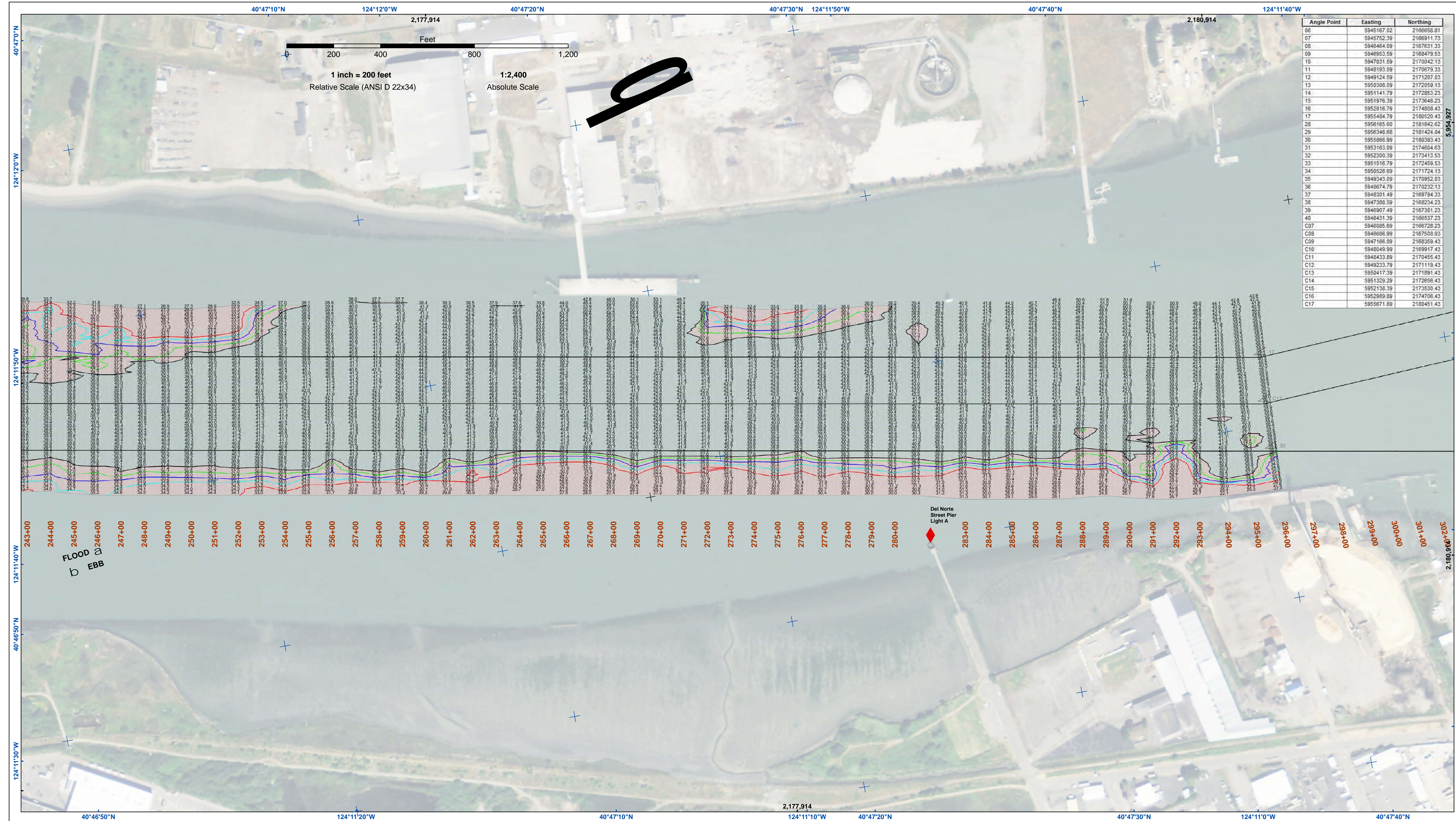
US Army Corps of Engineers
 San Francisco District
 1455 Market Street
 San Francisco, CA 94103

DISCLAIMER
 The United States Government furnishes this information as a service to the public and does not warrant, express or implied, the accuracy, completeness, or reliability of the information. The user is responsible for the results of any application of the data for other than its intended purpose. These data belong to the Government. Therefore, the recipient may not transfer these data to others without also transferring this Disclaimer.

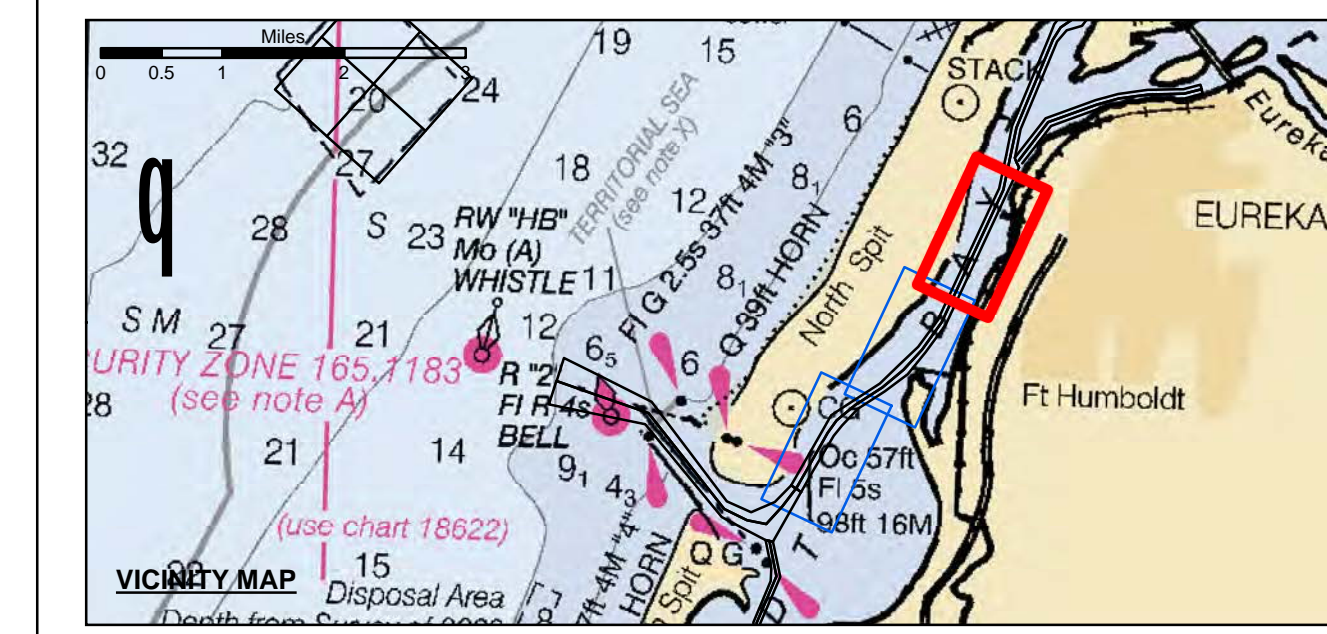
Prepared Under the Direction of: JOHN C. MORROW LT Colonel, C.E., District Engineer	Chart Date: Mar 07, 2017
Submitted: Hydro Survey Team Leader	Designed by: PDT
Recommended: Chief, Hydro Survey Section	Checked by: PDT
Approved: Chief, Construction Branch	Drawn by: PDT

CALIFORNIA
 HUMBOLDT COUNTY
**HUMBOLDT BAY
 NORTH BAY CHANNEL
 CONDITION SURVEY**
 1-4 MARCH 2017

Sheet Reference Number
 2 of 3



Angle Point	Easting	Northing
06	5945167.02	2166658.81
07	5945752.39	2166911.73
08	5946464.09	2167631.33
09	5946953.59	2168479.53
10	5947831.59	2170042.13
11	5948193.09	2170679.33
12	5949124.59	2171287.03
13	5950308.09	2172059.13
14	5951141.79	2172853.23
15	5951976.39	2173648.23
16	5952816.79	2174408.43
17	5953484.79	2180520.43
28	5956165.60	2181842.62
29	5956348.68	2181424.84
30	5955866.99	2180393.43
31	5953163.09	2174604.63
32	5952300.39	2173413.53
33	5951516.79	2172459.53
34	5950526.69	2171724.13
35	5949343.09	2170952.03
36	5948674.79	2170232.13
37	5948301.49	2169794.33
38	5947388.59	2168234.23
39	5946907.49	2167381.23
40	5946431.39	2166537.23
C07	5946085.69	2166728.23
C08	5946686.99	2167509.93
C09	5947186.09	2168359.43
C10	5948049.99	2169917.43
C11	5948433.69	2170455.43
C12	5949233.79	2171119.43
C13	5950417.39	2171891.43
C14	5951329.29	2172856.43
C15	5952138.39	2173530.43
C16	5952989.89	2174706.43
C17	5955671.89	2180441.43



Federal Navigation Channel	Beacon, General	Contours
Shoaling Area	Obstruction Point	-38
Placement Area	Navigation Buoy	-37
Anchorage Area	Navigation Buoy	-36
Wreck Area	Shoalest Sounding*	-35
Submerged Wreck		-34
Angle Point		

NOTES:
 DRAWINGS NOT TO BE USED AS NAVIGATION. ONLY CHANNEL CONDITION AT DATE OF SURVEY. THE LOCATION OF ALL NAVIGATION AIDS ARE BASED ON INFORMATION PROVIDED BY THE U.S. COAST GUARD. BUOY LOCATION REPRESENT THE POSITION OF THE SINKER ONLY.

SURVEYED BY THE CORPS OF ENGINEERS.
 SOUNDINGS WERE TAKEN BY FATHOMETER AND ARE SHOWN TO THE NEAREST TENTHS OF A FOOT.

SOUNDINGS ARE BASED ON THE DATUM OF MEAN LOWER LOW WATER AT THE LOCALITY.

PLANE GRID AND COORDINATES ARE BASED ON THE STATE OF CALIFORNIA COORDINATE SYSTEM, LAMBERT CONFORMAL PROJECTION, ZONE 1 NAD 83, CALIFORNIA, AS DESCRIBED IN SPECIAL PUBLICATION NO. 235, PUBLISHED BY THE NATIONAL OCEAN SURVEY.

PROJECT DEPTHS ARE AS FOLLOWS:
 BAR & ENTRANCE CHANNEL = 48 FEET
 NORTH BAY, SAMOA TO MILE 5.0 & = 38 FEET
 EUREKA CHANNEL, FIELDS LANDING CHANNEL & MILE 5.0 TO "N" STREET = 26 FEET

1:00 INDICATES THE NUMBER AND BEGINNING OF A LINE OF SOUNDINGS.
 SOUNDINGS ARE BASED ON TIDE GAUGES REFERENCED TO U.S.C. & G.S.

Vertical and Horizontal Control:
 NOAA Station: 941 8767 - North Spit, CA
 Benchmark:
 NO 11 1340 (PID: LV0359)
 MLLW Elev: 4.251m

Tides:
 RTK GPS, using GEOID12a and VDATUM
 RTK elevations calibrated at 10.0ft nail at Coast Guard Station Humboldt Bay

Position:
 RTK Positions

US Army Corps of Engineers
 San Francisco District
 1455 Market Street
 San Francisco, CA 94103

DISCLAIMER: The United States Government furnishes this information as a service to the public. It is not intended to be used for any purpose other than that for which it was prepared. The user is responsible for the results of any application of the data for other than its intended purpose. The United States Government makes no warranty, expressed or implied, concerning the accuracy, completeness, or reliability of the information. The user is responsible for the results of any application of the data for other than its intended purpose. The United States Government makes no warranty, expressed or implied, concerning the accuracy, completeness, or reliability of the information. The user is responsible for the results of any application of the data for other than its intended purpose.

Prepared Under the Direction of: JOHN C. MORROW LT Colonel, C.E., District Engineer	Chart Date: Mar 07, 2017
Submitted: Hydro Survey Team Leader	Designed by: PDT
Recommended: Chief, Hydro Survey Section	Drawn by: PDT
Approved: Chief, Construction Branch	Checked by: PDT

HUMBOLDT COUNTY
HUMBOLDT BAY
NORTH BAY CHANNEL
CONDITION SURVEY
 1-4 MARCH 2017

Sheet Reference
Number
3 of 3