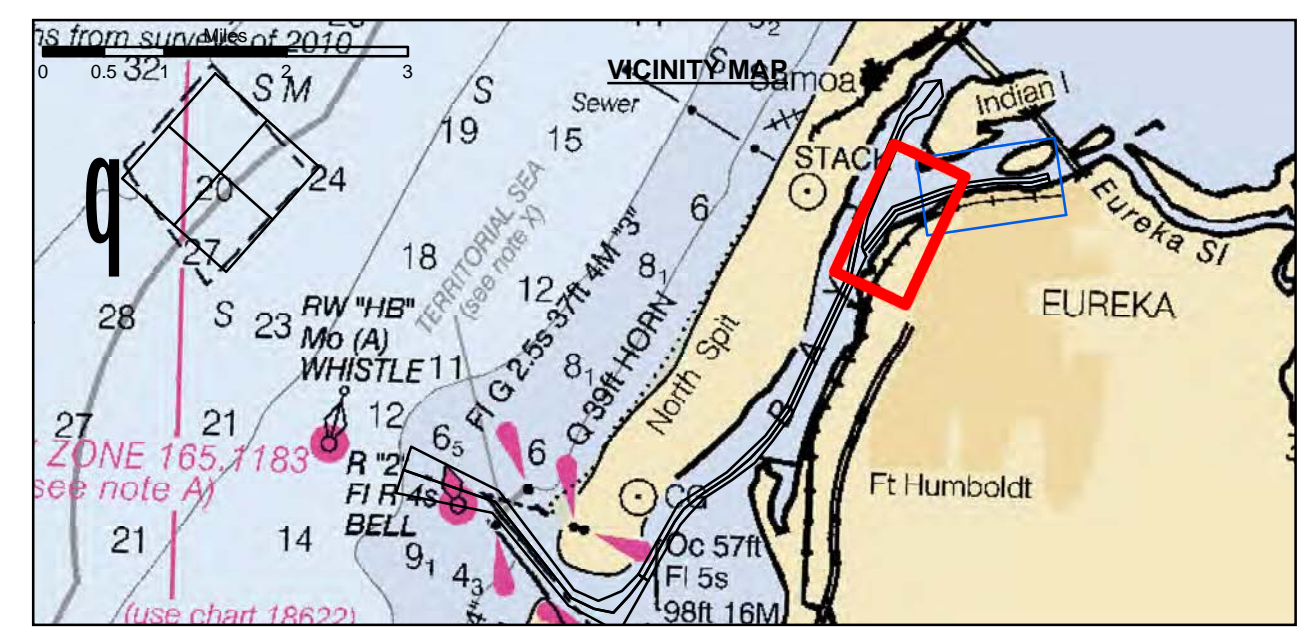


Angle Point	Easting	Northing
01E	596172.98	2181852.13
02E	5957495.79	2183569.43
03E	5959682.09	2184360.53
04E	5960648.49	2184617.53
05E	5961936.19	2184796.03
06E	5963483.19	2184829.53
07E	5964225.19	2185019.53
08E	5964324.49	2184632.13
09E	5963537.79	2184430.63
10E	5961968.09	2184396.63
11E	5960727.59	2184224.73
12E	5959501.69	2183978.43
13E	5957741.49	2183232.93
14E	5956489.79	2181688.03
E1	5956331.39	2181730.13
E2	5957618.69	2183401.23
E3	5959741.89	2184169.53
E4	5960688.09	2184421.13
E5	5961952.09	2184596.33
E6	5963510.49	2184630.03
E7	5964274.85	2184825.82



	Federal Navigation Channel		Beacon, General	<b>Contours</b>	
	Shoaling Area		Obstruction Point		-26
	Placement Area		Navigation Buoy		-25
	Anchorage Area		Navigation Buoy		-24
	Wreck Area		Shoalest Sounding*		-23
	Submerged Wreck				-22
	Angle Point				

NOTES:  
 DRAWINGS NOT TO BE USED AS NAVIGATION. ONLY CHANNEL CONDITION AT DATE OF SURVEY. THE LOCATION OF ALL NAVIGATION AIDS ARE BASED ON INFORMATION PROVIDED BY THE U.S. COAST GUARD. BUOY LOCATION REPRESENT THE POSITION OF THE SINKER ONLY.

SOUNDINGS WERE TAKEN BY FATHOMETER AND ARE SHOWN TO THE NEAREST TENTHS OF A FOOT.

SOUNDINGS ARE BASED ON THE DATUM OF MEAN LOWER LOW WATER AT THE LOCALITY.

PLANE GRID AND COORDINATES ARE BASED ON THE STATE OF CALIFORNIA COORDINATE SYSTEM, LAMBERT CONFORMAL PROJECTION, ZONE 1 NAD 83, CALIFORNIA, AS DESCRIBED IN SPECIAL PUBLICATION NO. 235, PUBLISHED BY THE NATIONAL OCEAN SURVEY.

PROJECT DEPTHS ARE AS FOLLOWS:  
 BAR & ENTRANCE CHANNEL = 48 FEET  
 NORTH BAY, SAMOIA TO MILE 5.0 & = 38 FEET  
 EUREKA CHANNEL, FIELDS LANDING CHANNEL & MILE 5.0 TO "N" STREET = 26 FEET

1:00 INDICATES THE NUMBER AND BEGINNING OF A LINE OF SOUNDINGS.  
 SOUNDINGS ARE BASED ON TIDE GAUGES REFERENCED TO U.S.C. & G.S.

Vertical and Horizontal Control:  
 NOAA Station: 941 8767 - North Spit, CA  
 Benchmark:  
 NO 11 1940 (PID: LV0359)  
 MLLW Elev: 4.251m

Tides:  
 RTK GPS, using GEOID12a and VDATUM  
 RTK elevations calibrated at 10.0ft nail at Coast Guard Station Humboldt Bay

Position:  
 RTK Positions

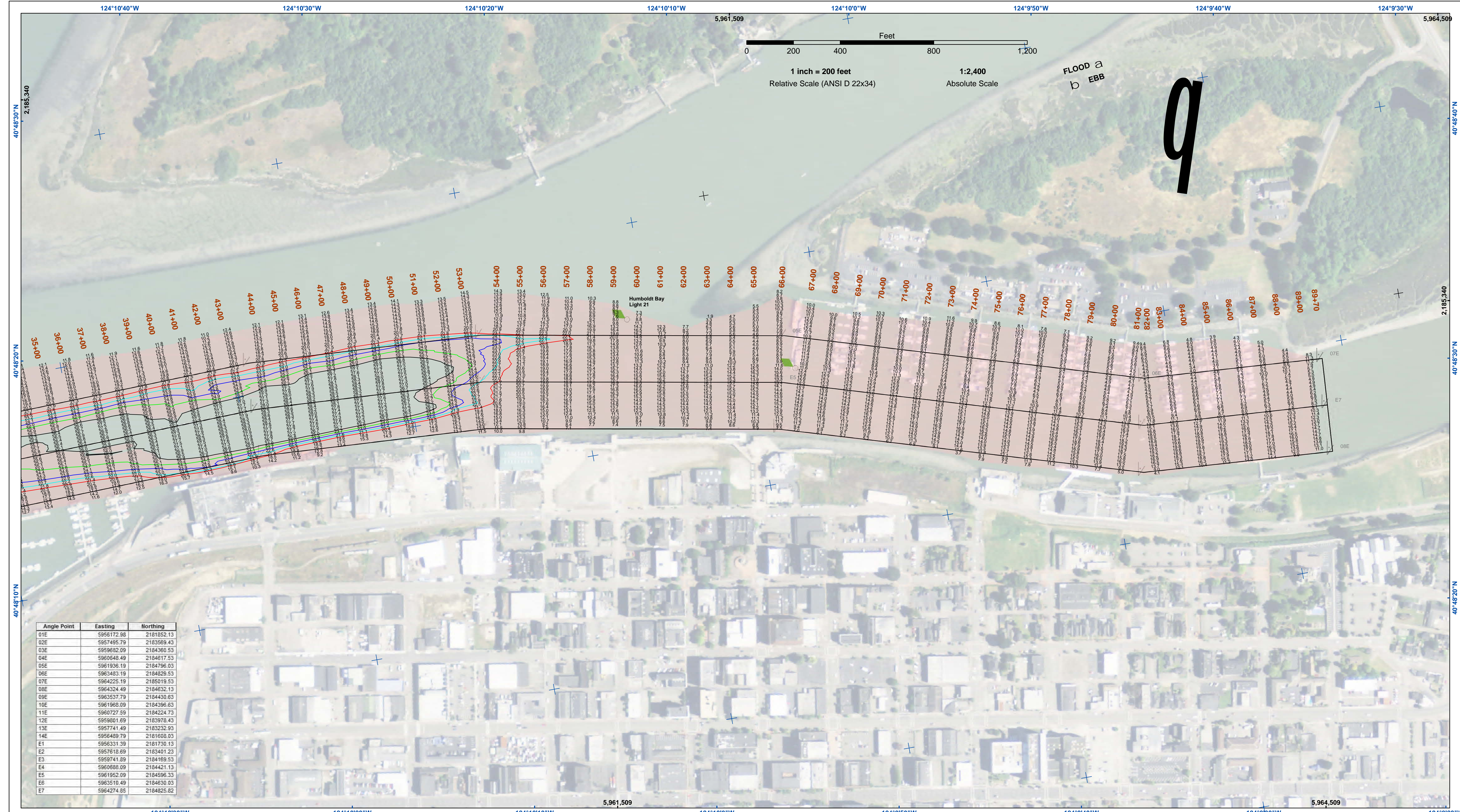
**US Army Corps of Engineers**  
 San Francisco District  
 1455 Market Street  
 San Francisco, CA 94103

**DISCLAIMER**  
 The United States Government furnishes this information as a service to the public and does not warrant, express or implied, the accuracy, completeness, or reliability of the information. The user is responsible for the results of any application of the data for other than its intended purpose. The United States Government shall not be liable for any damages, including consequential damages, arising from the use of this information. The recipient may not transfer these data to others without also transferring this disclaimer.

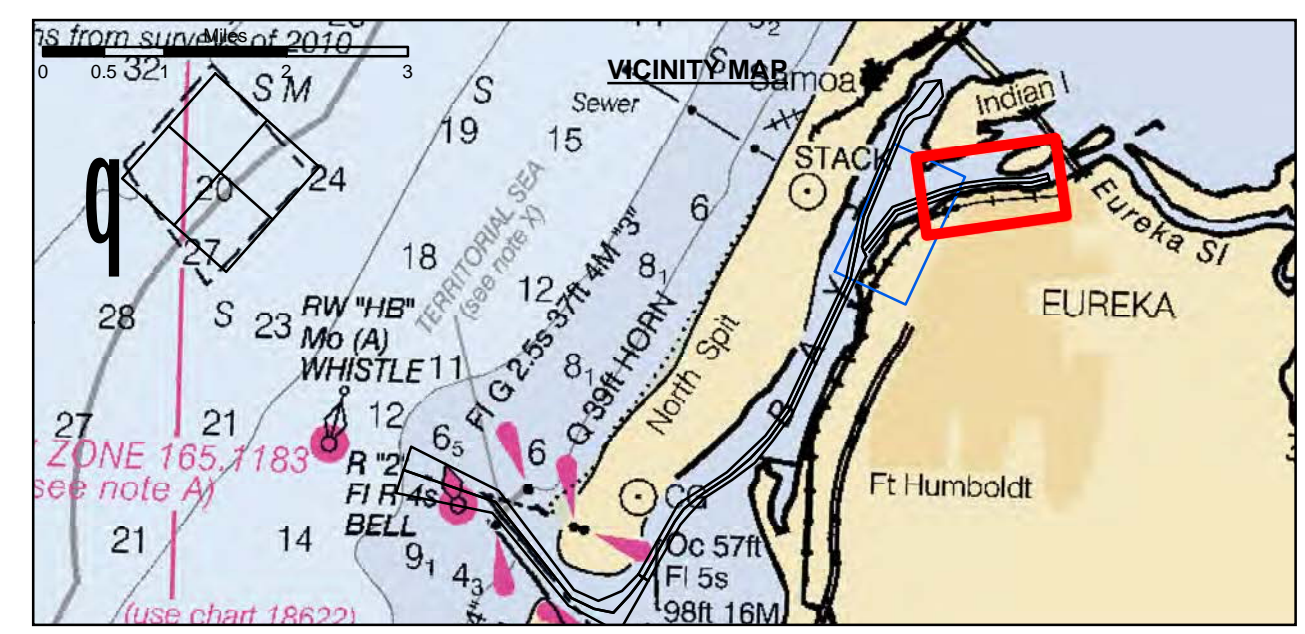
Prepared Under the Direction of: <b>JOHN C. MORROW</b> LT Colonel, C.E. District Engineer	Chart Date: Mar 07, 2017
Subplot: Hydro Survey Team Leader	Designed by: PDT
Recommended: Chief, Hydro Survey Section	Drawn by: PDT
Approved: Chief, Construction Branch	PDT

CALIFORNIA  
 HUMBOLDT COUNTY  
**HUMBOLDT BAY  
 EUREKA CHANNEL  
 CONDITION SURVEY**  
 1-4 MARCH 2017

**Sheet Reference Number 1 of 2**



Angle Point	Easting	Northing
01E	596172.98	2181852.13
02E	5957495.79	2183569.43
03E	5959682.09	2184360.53
04E	5960648.49	2184617.53
05E	5961936.19	2184796.03
06E	5963483.19	2184829.53
07E	5964225.19	2185019.53
08E	5964324.49	2184632.13
09E	5963537.79	2184430.63
10E	5961968.09	2184396.63
11E	5960727.59	2184224.73
12E	5959501.69	2183978.43
13E	5957741.49	2183232.93
14E	5956489.79	2181688.03
E1	5956331.39	2181730.13
E2	5957618.69	2183401.23
E3	5959741.89	2184169.53
E4	5960688.09	2184421.13
E5	5961952.09	2184596.33
E6	5963510.49	2184630.03
E7	5964274.85	2184825.82



Federal Navigation Channel	Beacon, General	<b>Contours</b>
Shoaling Area	Obstruction Point	-26
Placement Area	Navigation Buoy	-25
Anchorage Area	Navigation Buoy	-24
Wreck Area	Navigation Buoy	-23
Submerged Wreck	Shoalest Sounding*	-22
Angle Point		

NOTES:  
 DRAWINGS NOT TO BE USED AS NAVIGATION. ONLY CHANNEL CONDITION AT DATE OF SURVEY. THE LOCATION OF ALL NAVIGATION AIDS ARE BASED ON INFORMATION PROVIDED BY THE U.S. COAST GUARD. BUOY LOCATION REPRESENT THE POSITION OF THE SINKER ONLY.  
 SURVEYED BY THE CORPS OF ENGINEERS.  
 SOUNDINGS WERE TAKEN BY FATHOMETER AND ARE SHOWN TO THE NEAREST TENTHS OF A FOOT.  
 SOUNDINGS ARE BASED ON THE DATUM OF MEAN LOWER LOW WATER AT THE LOCALITY.  
 PLANE GRID AND COORDINATES ARE BASED ON THE STATE OF CALIFORNIA COORDINATE SYSTEM, LAMBERT CONFORMAL PROJECTION, ZONE 1 NAD 83, CALIFORNIA, AS DESCRIBED IN SPECIAL PUBLICATION NO. 235, PUBLISHED BY THE NATIONAL OCEAN SURVEY.  
 PROJECT DEPTHS ARE AS FOLLOWS:  
 BAR & ENTRANCE CHANNEL = 48 FEET  
 NORTH BAY, SAMOATO MILE 5.0 & = 38 FEET  
 EUREKA CHANNEL, FIELDS LANDING CHANNEL & MILE 5.0 TO "N" STREET = 26 FEET

1:00 INDICATES THE NUMBER AND BEGINNING OF A LINE OF SOUNDINGS.  
 SOUNDINGS ARE BASED ON TIDE GAUGES REFERENCED TO U.S.C. & G.S.  
 Vertical and Horizontal Control:  
 NOAA Station: 941 8767 - North Spit, CA  
 Benchmark:  
 NO 11 1340 (PID: LV0359)  
 MLLW Elev: 4.251m  
 Tides:  
 RTK GPS, using GEOID12a and VDATUM  
 RTK elevations calibrated at 10.0ft nail at Coast Guard Station Humboldt Bay  
 Position:  
 RTK Positions

**US Army Corps of Engineers**  
 San Francisco District  
 1455 Market Street  
 San Francisco, CA 94103

**DISCLAIMER**  
 The United States Government furnishes this information as a service to the public and does not warrant, express or implied, the accuracy, completeness, or reliability of the data. The user is responsible for the results of any application of the data for other than its intended purpose. The United States Government makes no liability whatsoever to any person by reason of any use made thereof. These data belong to the Government. Therefore the recipient may not transfer these data to others without also transferring this Disclaimer.

Chart Date:	Mar 07, 2017
Designed by:	PDT
Plotted by:	PDT
Checked by:	PDT
Drawn by:	PDT

CALIFORNIA  
 HUMBOLDT COUNTY  
**HUMBOLDT BAY  
 EUREKA CHANNEL  
 CONDITION SURVEY**  
 1-4 MARCH 2017

**Sheet  
 Reference  
 Number  
 2 of 2**