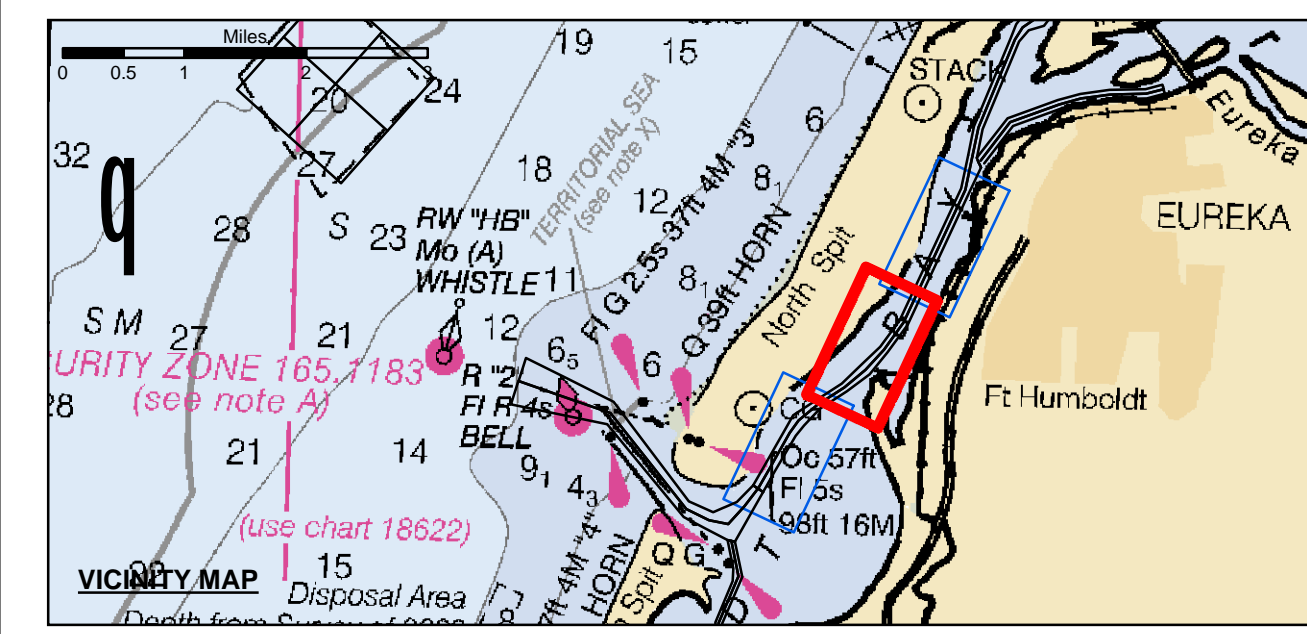


Angle Point	Easting	Northing
06	5945167.02	2166658.81
07	5945752.39	2166911.73
08	5946464.09	2167631.33
09	5946953.59	2168479.53
10	5947831.59	2170042.13
11	5948193.09	2170679.33
12	5949124.59	2171287.03
13	5950388.09	2172059.13
14	5951141.79	2172853.23
15	5951976.39	2173648.23
16	5952816.79	2174408.43
17	5953484.79	2175204.43
28	595165.00	2161942.62
29	595348.68	2161424.64
30	5955866.99	2160393.43
31	5953163.09	2174604.63
32	5952300.39	2173413.53
33	5951516.79	2172459.53
34	5950526.69	2171724.13
35	5949343.09	2170952.03
36	5948674.79	2170232.13
37	5948301.49	2169794.33
38	5947388.59	2168234.23
39	5946907.49	2167381.23
40	5946431.39	2166537.23
C07	5946085.69	2166728.23
C08	5946686.99	2167508.93
C09	5947166.09	2168359.43
C10	5948049.99	2169917.43
C11	5948433.89	2170455.43
C12	5949233.79	2171119.43
C13	5950417.39	2171981.43
C14	5951329.29	2172856.43
C15	5952138.39	2173530.43
C16	5952989.89	2174706.43
C17	5955671.89	2180451.43



Federal Navigation Channel	Beacon, General	<b>Contours</b>
Shoaling Area	Obstruction Point	-38
Placement Area	Navigation Buoy	-37
Anchorage Area	Navigation Buoy	-36
Wreck Area	Navigation Buoy	-35
Submerged Wreck	Shoalest Sounding*	-34
Angle Point		

NOTES:  
DRAWINGS NOT TO BE USED AS NAVIGATION. ONLY CHANNEL CONDITION AT DATE OF SURVEY. THE LOCATION OF ALL NAVIGATION AIDS ARE BASED ON INFORMATION PROVIDED BY THE U.S. COAST GUARD. BUOY LOCATION REPRESENT THE POSITION OF THE SINKER ONLY.

SURVEYED BY THE CORPS OF ENGINEERS.

SOUNDINGS WERE TAKEN BY FATHOMETER AND ARE SHOWN TO THE NEAREST TENTHS OF A FOOT.

SOUNDINGS ARE BASED ON THE DATUM OF MEAN LOWER LOW WATER AT THE LOCALITY.

PLANE GRID AND COORDINATES ARE BASED ON THE STATE OF CALIFORNIA COORDINATE SYSTEM, LAMBERT CONFORMAL PROJECTION, ZONE 1 NAD 83, CALIFORNIA, AS DESCRIBED IN SPECIAL PUBLICATION NO. 235, PUBLISHED BY THE NATIONAL OCEAN SURVEY.

PROJECT DEPTHS ARE AS FOLLOWS:  
BAR & ENTRANCE CHANNEL = 48 FEET  
NORTH BAY, SAMOA TO MILE 5.0 & = 38 FEET  
EUREKA CHANNEL, FIELDS LANDING CHANNEL & MILE 5.0 TO "N" STREET = 26 FEET

SOUNDINGS ARE BASED ON TIDE GAUGES REFERENCED TO U.S.C. & G.S.

BENCH MARKS AS FOLLOWS:  
EUREKA & SOMOA CHANNELS - B.M. NO. 4 (1906) ELEV. 33.61' M.L.L.W.  
ENTRANCE & NORTH BAY CHANNELS - B.M. NO. 9 (1937) ELEV. 16.35' M.L.L.W.  
FIELDS LANDING CHANNEL - B.M. NO. 5 (1925) ELEV. 8.52' M.L.L.W.

**US Army Corps of Engineers**  
San Francisco District  
1455 Market Street  
San Francisco, CA 94103

**DISCLAIMER**  
The United States Government furnishes this information for the purpose of providing accurate and reliable data for the use of the recipient. The data represents the results of data collected by the United States Government. The data is not intended for use in any other manner than that intended by the United States Government. The user is responsible for the results of any application of the data for other than its intended purpose. The United States Government makes no warranty, expressed or implied, concerning the accuracy, completeness, or reliability of the data. The user is responsible for the results of any application of the data for other than its intended purpose. The United States Government makes no liability whatsoever to any person by reason of any use made thereof. These data belong to the Government. Therefore the recipient may not transfer these data to others without also transferring this Disclaimer.

Prepared Under the Direction of <b>JOHN C. MORROW</b> LT COLONEL, C.E., DISTRICT ENGINEER	Surveyed By: PDT	Chart Date: Feb 25, 2016
Submitted: Hydro Survey Team Leader	Plotted By: PDT	Designed by: PDT
Recommended: Chief, Hydro Survey Section	Checked By: PDT	Drawn by: PDT
Approved: Chief, Construction Branch		

CALIFORNIA  
HUMBOLDT COUNTY  
**HUMBOLDT BAY  
NORTH BAY CHANNEL**  
CONDITION SURVEY  
6-10 FEBRUARY 2016

**Sheet Reference Number**  
2 of 3