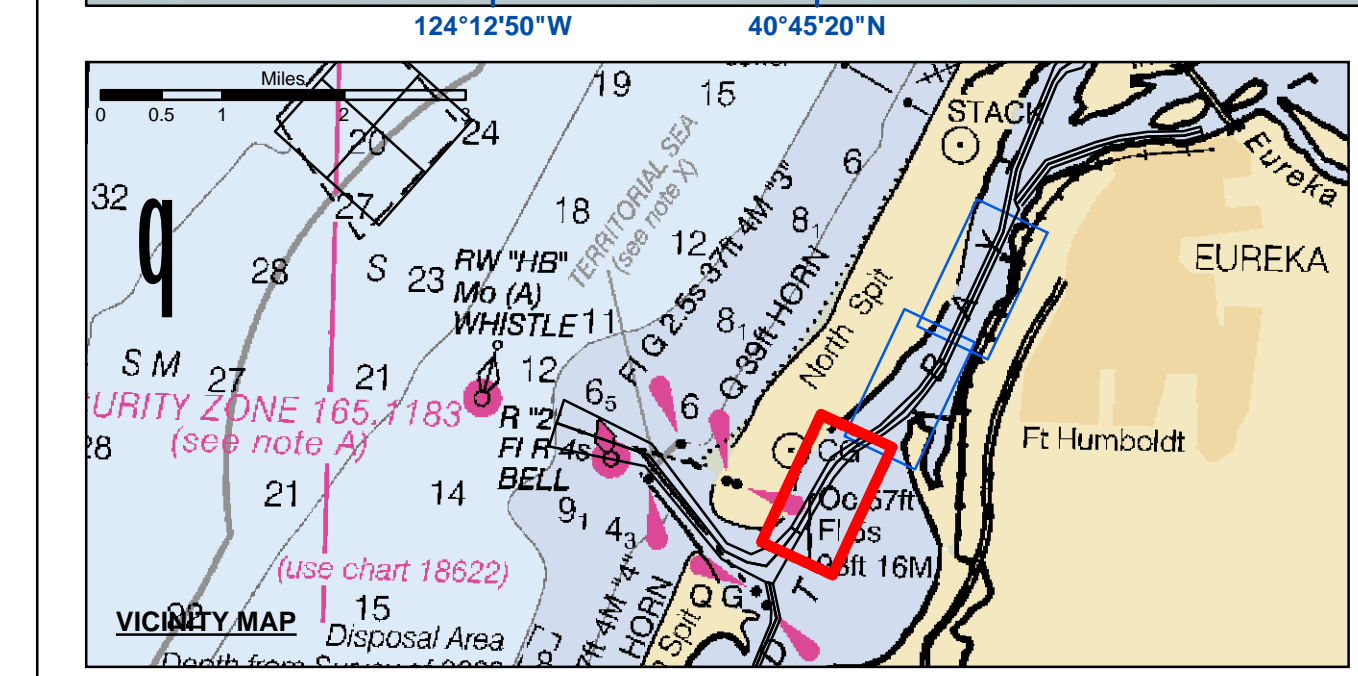


Angle Point	Easting	Northing
06	5945167.02	2166658.81
07	5945752.39	2166911.73
08	5946464.09	2167631.33
09	5946953.59	2168479.53
10	5947831.59	2170042.13
11	5948193.09	2170679.33
12	5949124.59	2171267.03
13	5950308.09	2172059.13
14	5951141.79	2172853.23
15	5951976.39	2173646.23
16	5952816.79	2174438.43
17	5953484.79	2175204.43
28	5956165.60	2181942.62
29	5956348.68	2181424.64
30	5955866.99	2180393.43
31	5953163.09	2174604.63
32	5952300.39	2173413.53
33	5951516.79	2172459.53
34	5950526.69	2171724.13
35	5949343.09	2170952.03
36	5948674.79	2170232.13
37	5948301.49	2169794.33
38	5947388.59	2168234.23
39	5946907.49	2167381.23
40	5946431.39	2166537.23
C07	5946085.69	2166728.23
C08	5946686.99	2167509.93
C09	5947166.09	2168359.43
C10	5948049.99	2169917.43
C11	5948433.89	2170455.43
C12	5949233.79	2171119.43
C13	5950417.39	2171891.43
C14	5951329.29	2172856.43
C15	5952138.39	2173530.43
C16	5952989.89	2174706.43
C17	5953671.89	2180451.43

**US Army Corps of Engineers**  
 San Francisco District  
 1455 Market Street  
 San Francisco, CA 94103

**DISCLAIMER**  
 The United States Government furnishes this information for the general information of the recipient. The recipient may not transfer this information to others without also transferring this disclaimer. The data represents the results of data collected by the United States Government. The data is not intended for navigation. The user is responsible for the results of any use of the data for other than its intended purpose. The United States Government makes no warranty, expressed or implied, concerning the accuracy, completeness, or reliability of the information furnished. The United States Government is not liable for any damage or loss, including consequential damage, arising from the use of the information furnished. The recipient may not transfer this information to others without also transferring this disclaimer.



- Federal Navigation Channel
- Shoaling Area
- Placement Area
- Anchorage Area
- Wreck Area
- Submerged Wreck
- Angle Point
- Beacon, General
- Obstruction Point
- Navigation Buoy
- Navigation Buoy
- Shoalest Sounding\*
- Contours**
- 38
- 37
- 36
- 35
- 34

**NOTES:**  
 DRAWINGS NOT TO BE USED AS NAVIGATION. ONLY CHANNEL CONDITION AT DATE OF SURVEY. THE LOCATION OF ALL NAVIGATION AIDS ARE BASED ON INFORMATION PROVIDED BY THE U.S. COAST GUARD. BUOY LOCATION REPRESENT THE POSITION OF THE SINKER ONLY.

SOUNDINGS WERE TAKEN BY FATHOMETER AND ARE SHOWN TO THE NEAREST TENTHS OF A FOOT.  
 SOUNDINGS ARE BASED ON THE DATUM OF MEAN LOWER LOW WATER AT THE LOCALITY.

PLANE GRID AND COORDINATES ARE BASED ON THE STATE OF CALIFORNIA COORDINATE SYSTEM, LAMBERT CONFORMAL PROJECTION, ZONE 1 NAD 83, CALIFORNIA, AS DESCRIBED IN SPECIAL PUBLICATION NO. 235, PUBLISHED BY THE NATIONAL OCEAN SURVEY.

PROJECT DEPTHS ARE AS FOLLOWS:  
 BAR & ENTRANCE CHANNEL = 48 FEET  
 NORTH BAY, SAMOIA TO MILE 5.0 & = 38 FEET  
 EUREKA CHANNEL, FIELDS LANDING CHANNEL & MILE 5.0 TO "N" STREET = 26 FEET

SOUNDINGS ARE BASED ON TIDE GAUGES REFERENCED TO U.S.C. & G.S. BENCH MARKS AS FOLLOWS:  
 EUREKA & SOMOIA CHANNELS - B.M. NO. 4 (1906) ELEV. 33.61' M.L.L.W.  
 ENTRANCE & NORTH BAY CHANNELS - B.M. NO. 9 (1937) ELEV. 16.35' M.L.L.W.  
 FIELDS LANDING CHANNEL - B.M. NO. 5 (1925) ELEV. 8.52' M.L.L.W.

Prepared Under the Direction of <b>JOHN C. MORROW</b> LT. COLONEL, C.E., DISTRICT ENGINEER	Surveyed By:	Chart Date:
Submitted: Hydro Survey Team Leader	Plotted By:	Feb 25, 2016
Recommended: Chief, Hydro Survey Section	Checked By:	Designed by:
Approved: Chief, Construction Branch	PDT	PDT
	Drawn by:	PDT

CALIFORNIA  
 HUMBOLDT COUNTY  
**HUMBOLDT BAY**  
**NORTH BAY CHANNEL**  
 CONDITION SURVEY  
 6-10 FEBRUARY 2016

**Sheet Reference Number 1 of 3**