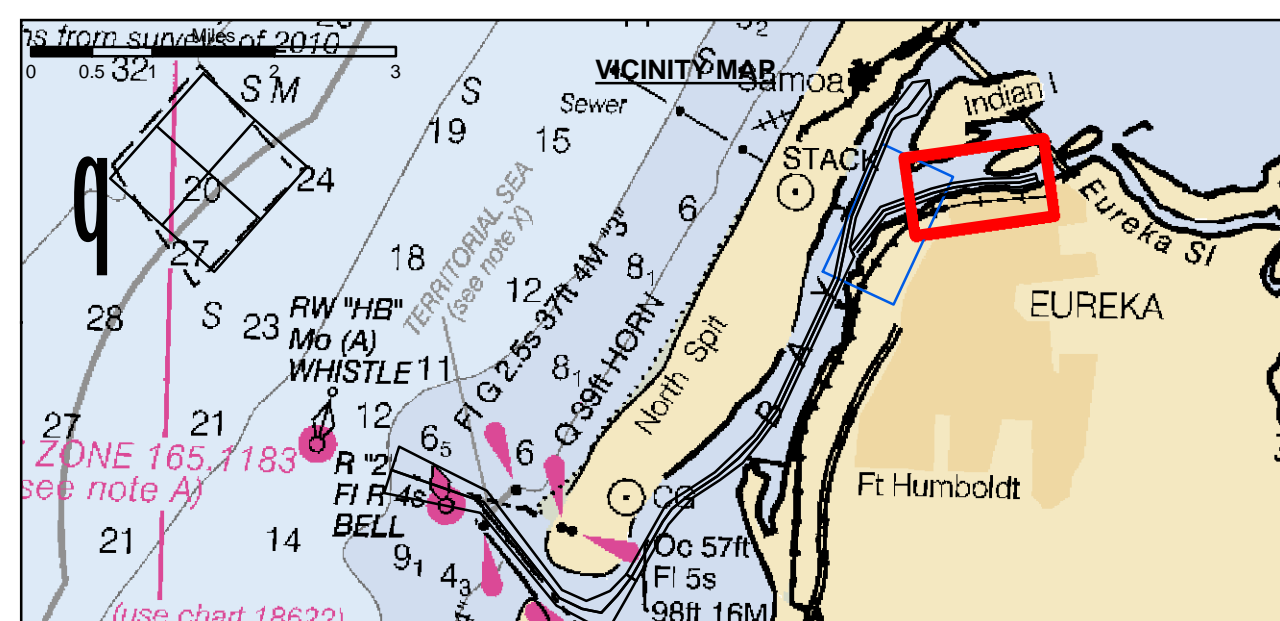


Angle Point	Easting	Northing
01E	5956172.98	2181852.13
02E	5957495.79	2183569.43
03E	5959682.09	2184360.53
04E	5960648.49	2184617.53
05E	5961936.19	2184796.03
06E	5963483.19	2184829.53
07E	5964225.19	2185019.53
08E	5964324.49	2184632.13
09E	5963537.79	2184430.63
10E	5961968.09	2184396.63
11E	5960727.59	2184224.73
12E	5959501.69	2183978.43
13E	5957741.49	2183232.93
14E	5956489.79	2181688.03
E1	5956331.39	2181730.13
E2	5957618.69	2183401.23
E3	5959741.89	2184169.53
E4	5960688.09	2184421.13
E5	5961952.09	2184596.33
E6	5963510.49	2184630.03
E7	5964274.85	2184625.82



Federal Navigation Channel	Beacon, General	Contours
Shoaling Area	Obstruction Point	-26
Placement Area	Navigation Buoy	-25
Anchorage Area	Navigation Buoy	-24
Wreck Area	Navigation Buoy	-23
Submerged Wreck	Shoalest Sounding*	-22
Angle Point		

NOTES:
DRAWINGS NOT TO BE USED AS NAVIGATION. ONLY CHANNEL CONDITION AT DATE OF SURVEY. THE LOCATION OF ALL NAVIGATION AIDS ARE BASED ON INFORMATION PROVIDED BY THE U.S. COAST GUARD. BUOY LOCATION REPRESENT THE POSITION OF THE SINKER ONLY.

SOUNDINGS WERE TAKEN BY FATHOMETER AND ARE SHOWN TO THE NEAREST TENTHS OF A FOOT.
SOUNDINGS ARE BASED ON THE DATUM OF MEAN LOWER LOW WATER AT THE LOCALITY.

PLANE GRID AND COORDINATES ARE BASED ON THE STATE OF CALIFORNIA COORDINATE SYSTEM, LAMBERT CONFORMAL PROJECTION, ZONE I NAD 83, CALIFORNIA, AS DESCRIBED IN SPECIAL PUBLICATION NO. 235, PUBLISHED BY THE NATIONAL OCEAN SURVEY.

PROJECT DEPTHS ARE AS FOLLOWS:
BAR & ENTRANCE CHANNEL = 48 FEET
NORTH BAY, SAMOA TO MILE 5.0 & = 38 FEET
EUREKA CHANNEL, FIELDS LANDING CHANNEL & MILE 5.0 TO "N" STREET = 26 FEET

1:00 INDICATES THE NUMBER AND BEGINNING OF A LINE OF SOUNDINGS.

SOUNDINGS ARE BASED ON TIDE GAUGES REFERENCED TO U.S.C. & G.S.
BENCH MARKS AS FOLLOWS:
EUREKA & SOMOA CHANNELS - B.M. NO. 4 (1906) ELEV. 33.61' M.L.L.W.
ENTRANCE & NORTH BAY CHANNELS - B.M. NO. 9 (1937) ELEV. 16.35' M.L.L.W.
FIELDS LANDING CHANNEL - B.M. NO. 5 (1925) ELEV. 8.52' M.L.L.W.

US Army Corps of Engineers
San Francisco District
1455 Market Street
San Francisco, CA 94103

DISCLAIMER
The United States Government furnishes the data represented by this drawing for the purpose of providing information. The United States Government makes no warranty, expressed or implied, concerning the accuracy, completeness, or timeliness of the data furnished. The United States Government under no liability whatsoever to any person by reason of any use made thereof. These data belong to the Government. Therefore the recipient may not transfer these data to others without also transferring this disclaimer.

Chart Date:	Feb 25, 2016
Designed by:	PDT
Plotted by:	PDT
Checked by:	PDT
Drawn by:	PDT

CALIFORNIA
HUMBOLDT COUNTY
**HUMBOLDT BAY
EUREKA CHANNEL
CONDITION SURVEY**
22 FEBRUARY 2016

**Sheet
Number
2 of 2**