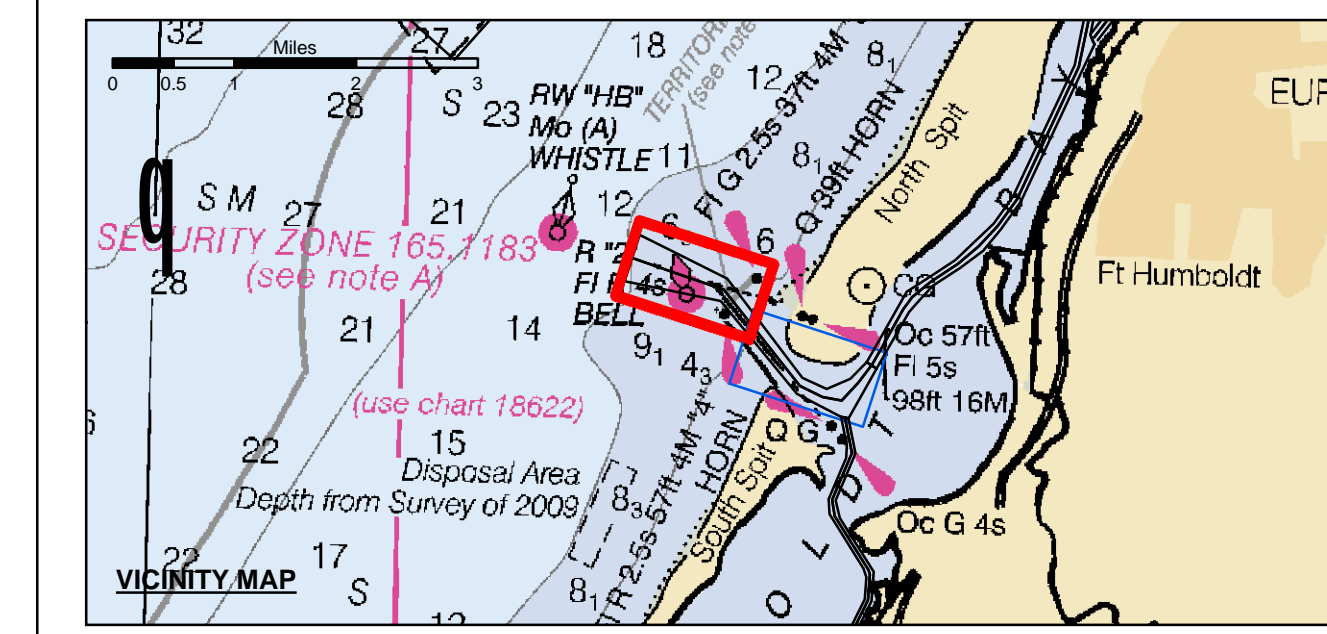


NAD 83 CENTERLINE ANGLE POINTS HUMBOLDT BAY (BAR & ENTRANCE)					
Δ PT	X	Y	Δ PT	X	Y
C1	5936273.49	2172157.43	24	5959081.79	2187578.43
C2	5938147.59	2171508.43	25	5958421.69	2187381.23
C3	5940265.09	2170773.43	26	5958007.99	2186903.83
C4	5943553.39	2166602.43	27	5956425.99	2183303.63
C5	5944545.29	2166122.43	28	5956165.59	2181842.63
C6	5945752.39	2165911.73	29	5956346.69	2181424.83
C7	5946085.69	2165728.23	30	5956566.99	2180383.43
C8	5946886.99	2165508.33	31	5956165.09	2174904.63
C9	5947166.09	2165359.43	32	5956200.39	2173413.53
C10	5948049.99	2165917.43	33	5956151.79	2172459.63
C11	5948433.89	2170455.43	34	5956525.69	2171724.13
C12	5948233.79	2171119.43	35	5948343.09	2170952.03
C13	5950417.39	2171891.43	36	5948674.79	2170232.13
C14	5951329.29	2172565.43	37	5948301.49	2169794.33
C15	5952138.39	2173530.43	38	5947385.59	2168234.23
C16	5952989.89	2174705.43	39	5946907.49	2167381.23
C17	5953711.89	2180511.43	40	5946431.39	2166537.23
C18	5956236.79	2183159.43	41	5945072.89	2165192.43
C19	5957823.09	2186373.43	42	5945554.09	2162524.33
C20	5958152.59	2187513.43	43	5944363.09	2165776.33
C21	5958681.79	2187878.43	44	5943441.39	2162611.63
C22	5959291.79	2188978.43	45	5943121.19	2170287.83
C23	5959581.79	2189078.43	46	5937908.79	2170746.43
			47	5935950.29	2171151.43



Federal Navigation Channel	Beacon, General	Contours
Shoaling Area	Obstruction Point	-48
Placement Area	Navigation Buoy	-47
Anchorage Area	Navigation Buoy	-46
Wreck Area	Shoalest Sounding*	-45
Submerged Wreck		-44
Zone_I_Angle_Points		

NOTES:  
DRAWINGS NOT TO BE USED AS NAVIGATION. ONLY CHANNEL CONDITION AT DATE OF SURVEY. THE LOCATION OF ALL NAVIGATION AIDS ARE BASED ON INFORMATION PROVIDED BY THE U.S. COAST GUARD. BUOY LOCATION REPRESENT THE POSITION OF THE SINKER ONLY.

SURVEYED BY THE CORPS OF ENGINEERS.

SOUNDINGS WERE TAKEN BY FATHOMETER AND ARE SHOWN TO THE NEAREST TENTHS OF A FOOT.

SOUNDINGS ARE BASED ON THE DATUM OF MEAN LOWER LOW WATER AT THE LOCALITY.

PLANE GRID AND COORDINATES ARE BASED ON THE STATE OF CALIFORNIA COORDINATE SYSTEM, LAMBERT CONFORMAL PROJECTION, ZONE I NAD 83, CALIFORNIA, AS DESCRIBED IN SPECIAL PUBLICATION NO. 235, PUBLISHED BY THE NATIONAL OCEAN SURVEY.

PROJECT DEPTHS ARE AS FOLLOWS:  
BAR & ENTRANCE CHANNEL = 48 FEET  
NORTH BAY, SAMOIA TO MILE 5.0 & = 38 FEET  
EUREKA CHANNEL, FIELDS LANDING CHANNEL & MILE 5.0 TO "N" STREET = 26 FEET

1:00 INDICATES THE NUMBER AND BEGINNING OF A LINE OF SOUNDINGS.

SOUNDINGS ARE BASED ON TIDE GAUGES REFERENCED TO U.S.C. & G.S. BENCH MARKS AS FOLLOWS:  
EUREKA & SOMOIA CHANNELS - B.M. NO. 4 (1906) ELEV. 33.61' M.L.L.W.  
ENTRANCE & NORTH BAY CHANNELS - B.M. NO. 9 (1937) ELEV. 16.35' M.L.L.W.  
FIELDS LANDING CHANNEL - B.M. NO. 5 (1925) ELEV. 8.52' M.L.L.W.

**US Army Corps of Engineers**  
San Francisco District  
1455 Market Street  
San Francisco, CA 94103

**DISCLAIMER**  
The United States Government furnishes this information for the purpose of the information only. The user is responsible for the accuracy of the data for their intended purpose. The user is responsible for the accuracy of the data for their intended purpose. The user is responsible for the accuracy of the data for their intended purpose.

Chart Date:	Feb 25, 2016
Surveyed By:	JOHN C. MORROW
Plotted By:	PDT
Designed By:	PDT
Checked By:	PDT
Drawn By:	PDT

CALIFORNIA  
HUMBOLDT COUNTY  
HUMBOLDT BAY  
BAR & ENTRANCE CHANNEL  
CONDITION SURVEY  
6-10 FEBRUARY 2016

**Sheet Reference Number**  
1 of 2