

**PRELIMINARY ISSUE**  
THIS PLAN ISSUED FOR ADVANCE INFORMATION ONLY

**Scale:**  
1 inch = 200 feet  
Relative Scale (ANSI D 22x34)  
Absolute Scale: 1:2,400

**Coordinates:**  
Top: 124°11'30"W, 40°48'40"N, 2,187,077, 40°48'50"N, 124°11'20"W, 40°49'0"N, 124°11'10"W, 40°49'20"N, 2,190,077  
Left: 124°11'30"W, 40°48'30"N, 124°11'20"W, 40°48'20"N  
Right: 124°10'50"W, 40°49'20"N, 124°10'40"W, 40°49'10"N, 124°10'30"W, 40°49'0"N, 124°10'20"W, 40°48'50"N, 124°10'10"W, 40°48'40"N

Accession:	Accession:	Chart Date:	Feb 23, 2015
Accession:	Accession:	Surveyed By:	JOHN C. MORROW
Accession:	Accession:	Plotted By:	PDT
Accession:	Accession:	Checked By:	PDT
Accession:	Accession:	Drawn by:	PDT

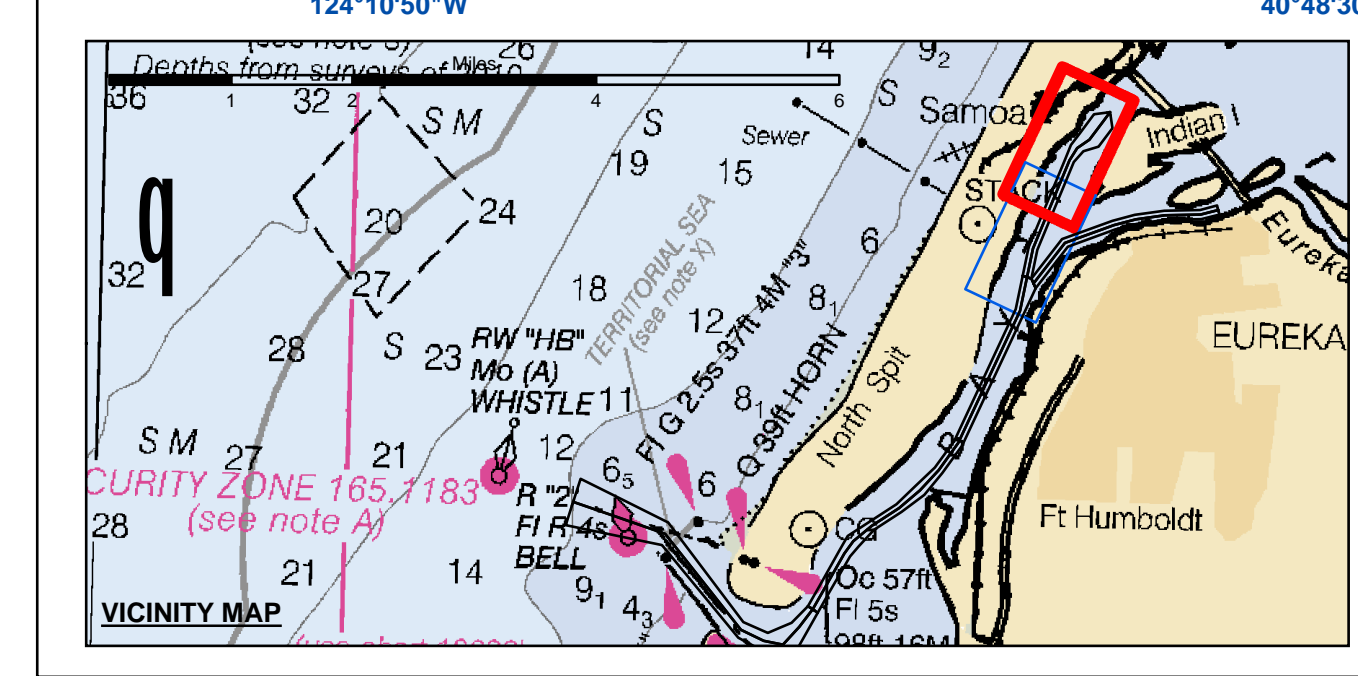
PREPARED UNDER THE DIRECTION OF  
**JOHN C. MORROW**  
LT COLONEL, C.E. DISTRICT ENGINEER

Submitted:  
Hydro Survey Team Leader

Recommended:  
Chief, Hydro Survey Section

Approved:  
Chief, Construction Branch

**CALIFORNIA**  
HUMBOLDT COUNTY  
HUMBOLDT BAY  
SAMOA CHANNEL  
CONDITION USRVEY  
14-16 FEBRUARY 2015



Federal Navigation Channel	Beacon, General	<b>Contours</b>
Shoaling Area	Obstruction Point	-38
Placement Area	Navigation Buoy	-37
Anchorage Area	Navigation Buoy	-36
Wreck Area	Navigation Buoy	-35
Submerged Wreck	Shoalest Sounding*	-34
Angle Point		

**NOTES:**  
DRAWINGS NOT TO BE USED AS NAVIGATION. ONLY CHANNEL CONDITION AT DATE OF SURVEY. THE LOCATION OF ALL NAVIGATION AIDS ARE BASED ON INFORMATION PROVIDED BY THE U.S. COAST GUARD. BUOY LOCATION REPRESENT THE POSITION OF THE SINKER ONLY.

SURVEYED BY THE CORPS OF ENGINEERS.

SOUNDINGS WERE TAKEN BY FATHOMETER AND ARE SHOWN TO THE NEAREST TENTHS OF A FOOT.

SOUNDINGS ARE BASED ON THE DATUM OF MEAN LOWER LOW WATER AT THE LOCALITY.

PLANE GRID AND COORDINATES ARE BASED ON THE STATE OF CALIFORNIA COORDINATE SYSTEM, LAMBERT CONFORMAL PROJECTION, ZONE I NAD 83, CALIFORNIA, AS DESCRIBED IN SPECIAL PUBLICATION NO. 235, PUBLISHED BY THE NATIONAL OCEAN SURVEY.

PROJECT DEPTHS ARE AS FOLLOWS:  
BAR & ENTRANCE CHANNEL - 48 FEET  
NORTH BAY, SAMOA TO MILE 5.0 & 38 FEET  
EUREKA CHANNEL, FIELDS LANDING CHANNEL & MILE 5.0 TO "N" STREET - 26 FEET

1:00 INDICATES THE NUMBER AND BEGINNING OF A LINE OF SOUNDINGS.

SOUNDINGS ARE BASED ON TIDE GAUGES REFERENCED TO U.S.C. & G.S.

BENCH MARKS AS FOLLOWS:  
EUREKA & SOMOA CHANNELS - B.M. NO. 4 (1906) ELEV. 33.61' M.L.L.W  
ENTRANCE & NORTH BAY CHANNELS - B.M. NO. 9 (1937) ELEV. 16.35' M.L.L.W  
FIELDS LANDING CHANNEL - B.M. NO. 5 (1925) ELEV. 8.52' M.L.L.W

CONTROL:  
BENCHMARK: 941 8767 TIDAL 11 (PID: LV0359)

HORIZONTAL:  
PRIMARY: RTK POSITIONING FROM 941 8767 TIDAL 11  
SECONDARY: CO DGPS  
VERTICAL/TIDES: RTK ELEVATIONS FROM 941 8767 TIDAL 11

**Sheet Reference Number**  
1 of 2