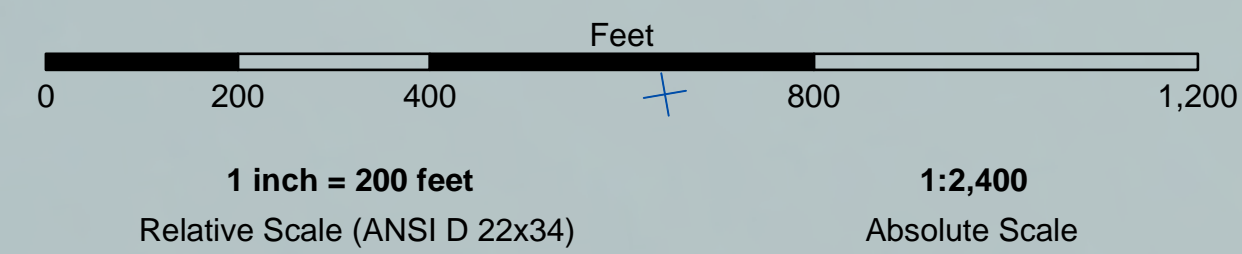


**PRELIMINARY ISSUE**  
THIS PLAN ISSUED FOR  
ADVANCE INFORMATION ONLY



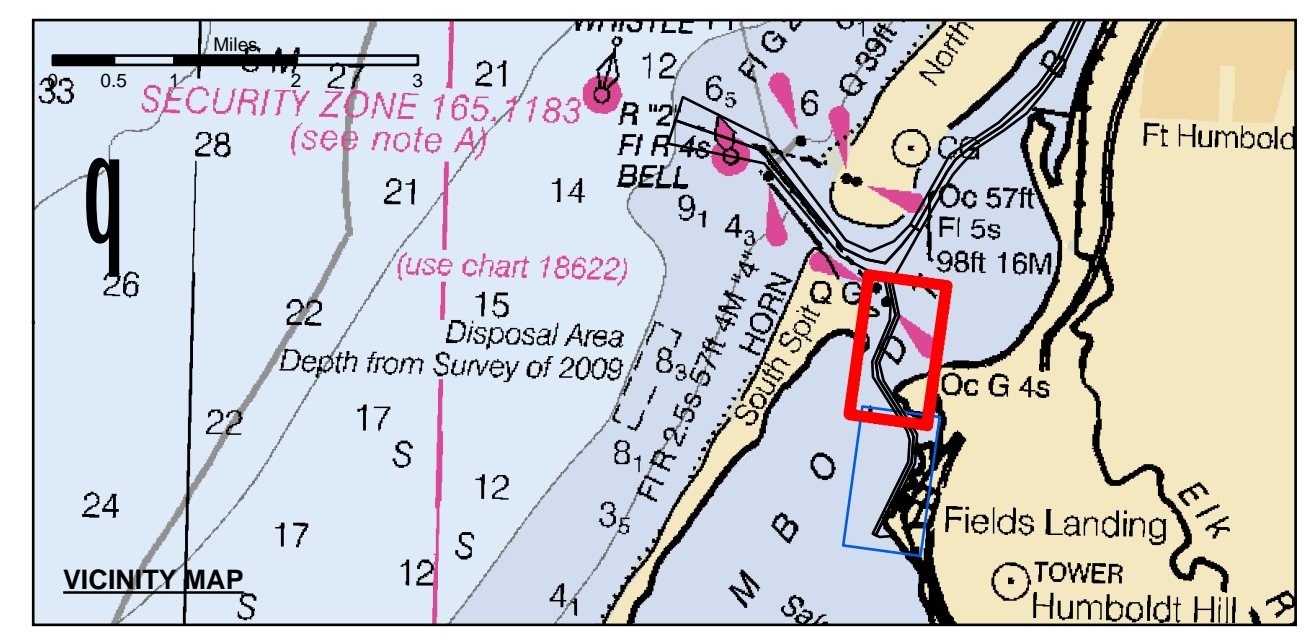
2,161,937

**US Army Corps of Engineers**  
San Francisco District  
1455 Market Street  
San Francisco, CA 94103

**DISCLAIMER**  
The United States Government furnishes this information as a service to the public and does not warrant, express or implied, the accuracy, completeness, or reliability of the information. The user is responsible for the results of any application of the data for other than its intended purpose. These data belong to the Government. Therefore, the recipient may not transfer these data to others without also transferring this disclaimer.

Chart Date:	Feb 26, 2015
Designed by:	PDT
Plotted by:	PDT
Checked by:	PDT
Drawn by:	PDT

Angle Point	Easting	Northing
02D	5945695.39	2164019.93
03D	5945577.09	2163480.73
04D	5944815.19	2161685.73
05D	5944549.69	2161026.63
06D	5946320.29	2158673.13
07D	5946443.69	2158296.73
08D	5946373.29	2157338.43
09D	5944832.09	2154225.03
10D	5945142.49	2154071.33
11D	5945640.09	2154120.63
12D	5945716.69	2154275.33
13D	5945411.89	2154719.93
14D	5946668.09	2157257.93
15D	5946761.99	2158532.43
16D	5945301.39	2160869.83
17D	5945118.39	2161632.23
18D	5945982.89	2163668.93
D2	5945826.59	2163684.63
D3	5944966.79	2161658.93
D4	5945075.59	2160948.23
D5	5946541.09	2159602.63
D6	5946602.79	2159414.13
D7	5946520.89	2157286.13
D8	5944966.49	2154158.45



- Federal Navigation Channel
- Shoaling Area
- Placement Area
- Anchorage Area
- Wreck Area
- Submerged Wreck
- Angle Point
- Beacon, General
- Obstruction Point
- Navigation Buoy
- Navigation Buoy
- Shoalest Sounding\*
- Contours**
- 26
- 25
- 24
- 23
- 22

**NOTES:**  
DRAWINGS NOT TO BE USED AS NAVIGATION. ONLY CHANNEL CONDITION AT DATE OF SURVEY. THE LOCATION OF ALL NAVIGATION AIDS ARE BASED ON INFORMATION PROVIDED BY THE U.S. COAST GUARD. BUOY LOCATION REPRESENT THE POSITION OF THE SINKER ONLY.  
SURVEYED BY THE CORPS OF ENGINEERS.  
SOUNDINGS WERE TAKEN BY FATHOMETER AND ARE SHOWN TO THE NEAREST TENTHS OF A FOOT.  
SOUNDINGS ARE BASED ON THE DATUM OF MEAN LOWER LOW WATER AT THE LOCALITY.  
PLANE GRID AND COORDINATES ARE BASED ON THE STATE OF CALIFORNIA COORDINATE SYSTEM, LAMBERT CONFORMAL PROJECTION, ZONE I NAD 83, CALIFORNIA, AS DESCRIBED IN SPECIAL PUBLICATION NO. 235, PUBLISHED BY THE NATIONAL OCEAN SURVEY.

**PROJECT DEPTHS ARE AS FOLLOWS:**  
BAR & ENTRANCE CHANNEL = 48 FEET  
NORTH BAY, SAMOIA TO MILE 5.0 & - 38 FEET  
EUREKA CHANNEL, FIELDS LANDING CHANNEL & MILE 5.0 TO 'N' STREET = 26 FEET  
1:00 INDICATES THE NUMBER AND BEGINNING OF A LINE OF SOUNDINGS.  
SOUNDINGS ARE BASED ON TIDE GAUGES REFERENCED TO U.S.C. & G.S.  
**BENCH MARKS AS FOLLOWS:**  
EUREKA & SONOMA CHANNELS - B.M. NO. 4 (1906) ELEV. 33.61 M.L.L.W.  
ENTRANCE & NORTH BAY CHANNELS - B.M. NO. 9 (1937) ELEV. 16.35' M.L.L.W.  
FIELDS LANDING CHANNEL - B.M. NO. 5 (1925) ELEV. 8.52' M.L.L.W.  
**CONTROL:**  
BENCHMARK: 941 8767 TIDAL 11 (PID: LV0359)  
**HORIZONTAL:**  
PRIMARY: RTK POSITIONING FROM 941 8767 TIDAL 11  
SECONDARY: CG DGPS  
**VERTICAL/TIDES:** RTK ELEVATIONS FROM 941 8767 TIDAL 11

CALIFORNIA  
HUMBOLDT COUNTY  
**HUMBOLDT BAY  
FIELDSLANDING CHANNEL  
CONDITION SURVEY  
18 FEBRUARY 2015**

**Sheet  
Reference  
Number  
1 of 2**