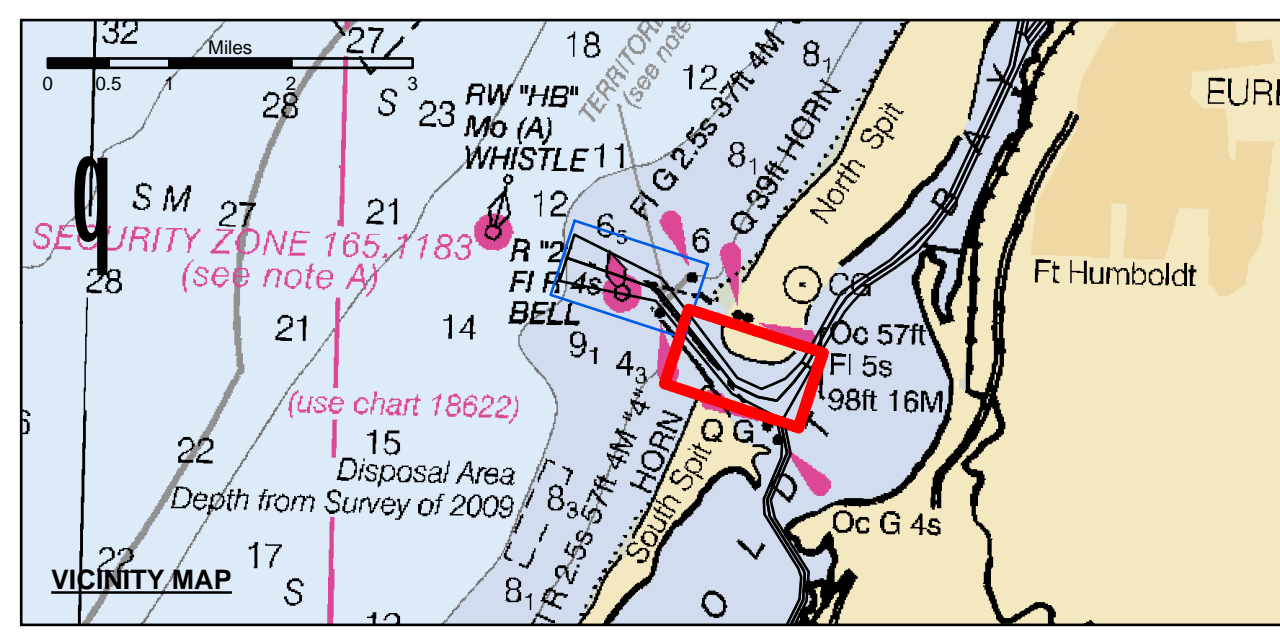


US Army Corps of Engineers
 San Francisco District
 1455 Market Street
 San Francisco, CA 94103

DISCLAIMER
 The United States Government furnishes this information for your information only. It is not intended to be used as a basis for any other action. The user is responsible for the results of any application of the data for other than its intended purpose. The United States Government makes no warranty, expressed or implied, concerning the accuracy, completeness, or reliability of this information. The user is responsible for the results of any application of the data for other than its intended purpose. These data belong to the Government. Therefore, the recipient may not transfer these data to others without also transferring this disclaimer.

Chart Date:	Feb 23, 2015
Designed by:	PDT
Drawn by:	PDT
Checked by:	PDT
Approved:	Chief, Construction Branch
Surveyed By:	Plotted By:
Flatted By:	PDT
Checked By:	PDT
Approved:	Chief, Construction Branch



Federal Navigation Channel	Beacon, General	Contours
Shoaling Area	Navigation Buoy	-48
Placement Area	Navigation Buoy	-47
Anchorage Area	Shoalest Sounding*	-46
Wreck Area		-45
Submerged Wreck		-44
Zone_I_Angle_Points		

NOTES:
 DRAWINGS NOT TO BE USED AS NAVIGATION. ONLY CHANNEL CONDITION AT DATE OF SURVEY. THE LOCATION OF ALL NAVIGATION AIDS ARE BASED ON INFORMATION PROVIDED BY THE U.S. COAST GUARD. BUOY LOCATION REPRESENT THE POSITION OF THE SINKER ONLY.
 SURVEYED BY THE CORPS OF ENGINEERS.
 SOUNDINGS WERE TAKEN BY FATHOMETER AND ARE SHOWN TO THE NEAREST TENTHS OF A FOOT.
 SOUNDINGS ARE BASED ON THE DATUM OF MEAN LOWER LOW WATER AT THE LOCALITY.
 PLANE GRID AND COORDINATES ARE BASED ON THE STATE OF CALIFORNIA COORDINATE SYSTEM, LAMBERT CONFORMAL PROJECTION, ZONE I NAD 83, CALIFORNIA, AS DESCRIBED IN SPECIAL PUBLICATION NO. 235, PUBLISHED BY THE NATIONAL OCEAN SURVEY.

PROJECT DEPTHS ARE AS FOLLOWS:
 BAR & ENTRANCE CHANNEL = 48 FEET
 NORTH BAY, SAMOA TO MILE 5.0 & = 38 FEET
 EUREKA CHANNEL, FIELDS LANDING CHANNEL & MILE 5.0 TO "N" STREET = 26 FEET

1:00 INDICATES THE NUMBER AND BEGINNING OF A LINE OF SOUNDINGS.

SOUNDINGS ARE BASED ON TIDE GAUGES REFERENCED TO U.S.C. & G.S. BENCH MARKS AS FOLLOWS:
 EUREKA & SOMOA CHANNELS - B.M. NO. 4 (1906) ELEV. 33.61' M.L.L.W.
 ENTRANCE & NORTH BAY CHANNELS - B.M. NO. 9 (1937) ELEV. 16.35' M.L.L.W.
 FIELDS LANDING CHANNEL - B.M. NO. 5 (1925) ELEV. 8.52' M.L.L.W.

CONTROL:
 BENCHMARK: 941 8767 TIDAL 11 (PID: LV0359)

HORIZONTAL:
 PRIMARY: RTK POSITIONING FROM 941 8767 TIDAL 11
 SECONDARY: CG DGPS
 VERTICAL/TIDES: RTK ELEVATIONS FROM 941 8767 TIDAL 11

HUMBOLDT COUNTY
 CALIFORNIA
**HUMBOLDT BAY
 ENTRANCE CHANNEL
 CONDITION/PRE-DREDGE**
 14-16 FEBRUARY 2015

**Sheet
 Reference
 Number**
 2 of 2