



US Army Corps
of Engineers
San Francisco District
1455 Market Street
San Francisco, CA 94103

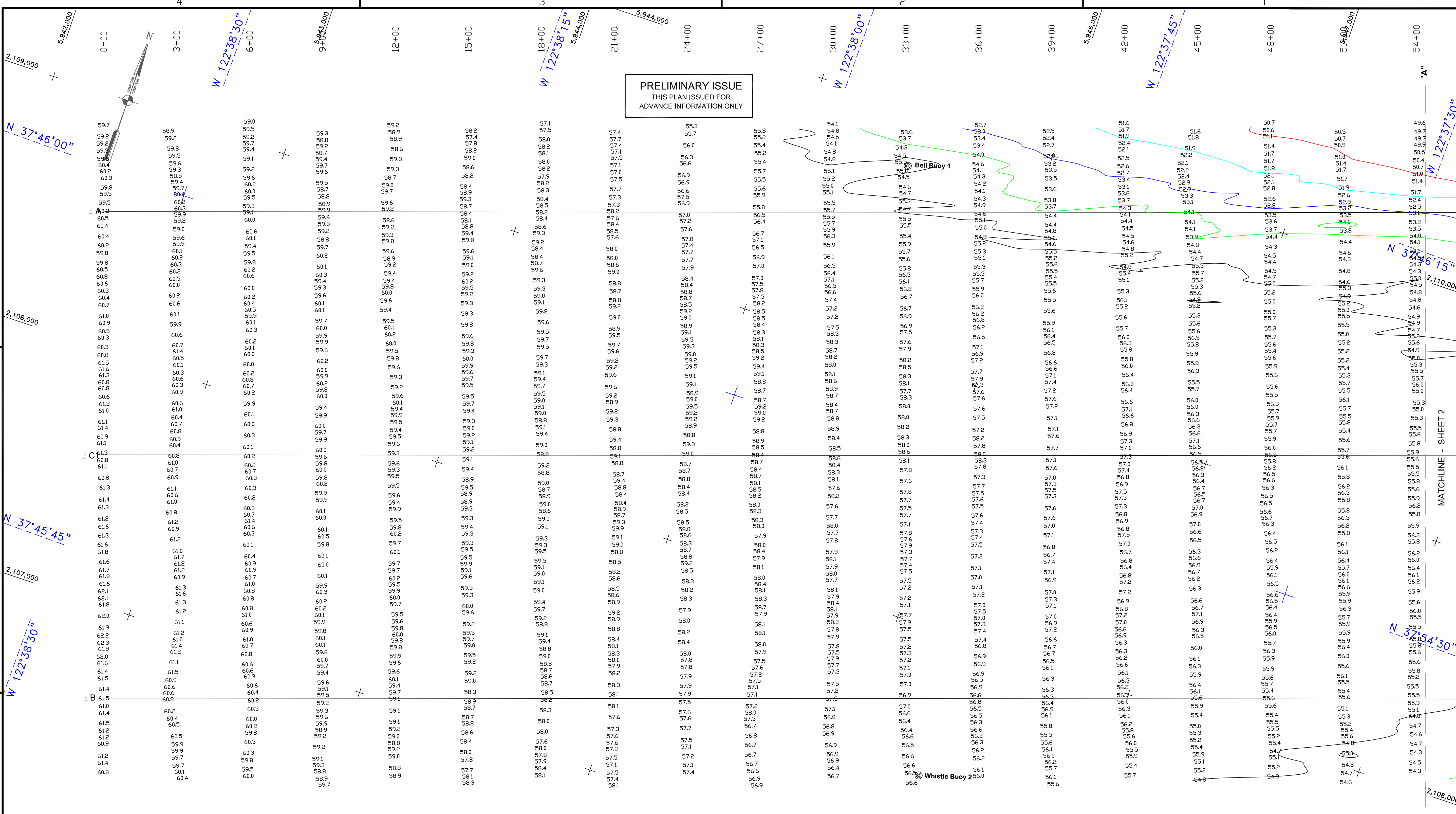
Mark	Description	Date	Appr.

SUBMITTED:	PDT	DRAWN BY:	PDT
	Hydro Survey Team Leader		PDT
APPROVAL RECOMMENDED:	SHEET NO.	DATE:	6/5/2013
	1 OF 5		1 2
APPROVED:	CHIEF, Hydro Survey Section	PREPARED UNDER THE DIRECTION OF	JOHN K. BAKER
	CHIEF, Construction Branch		LT. COLONEL, C.E., DISTRICT ENGINEER

CALIFORNIA
SAN FRANCISCO MAINSHIP CHANNEL
PREDREGE SURVEY
30 MAY & 4 JUNE 2013

Sheet reference number
C1

PRELIMINARY ISSUE
THIS PLAN ISSUED FOR
ADVANCE INFORMATION ONLY



NOTES:

DRAWINGS NOT TO BE USED AS NAVIGATION. ONLY CHANNEL CONDITION AT DATE OF SURVEY. THE LOCATION OF ALL NAVIGATION AIDS ARE BASED ON INFORMATION PROVIDED BY THE U.S. COAST GUARD. BUOY LOCATIONS REPRESENT THE POSITION OF THE SINKER ONLY.

SURVEYED BY THE CORPS OF ENGINEERS.

SOUNDINGS ARE TAKEN BY FATHOMETER AND ARE SHOWN TO THE NEAREST FOOT AND TENTHS OF A FOOT.

SOUNDINGS ARE BASED ON THE DATUM OF MEAN LOWER LOW WATER AT THE LOCALITY.

PLANE GRID AND COORDINATES ARE BASED ON LAMBERT PROJECTION, ZONE III NAD83, CALIFORNIA, AS DESCRIBED IN SPECIAL PUBLICATION NO. 235, PUBLISHED BY THE NATIONAL OCEAN SURVEY.

THE PROJECT DEPTH IS 55 FEET AT M.L.L.W.

SOUNDINGS ARE BASED TIDE GAUGE LOCATED AT THE HYDE STREET PIER, SAN FRANCISCO, CALIFORNIA.

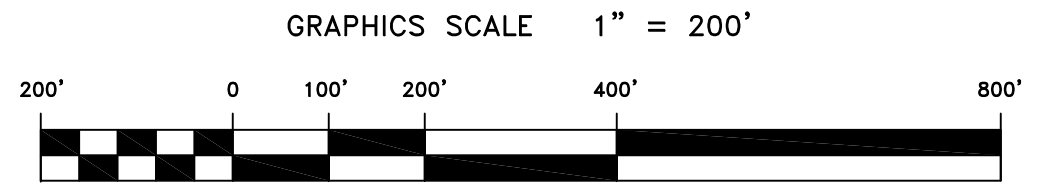
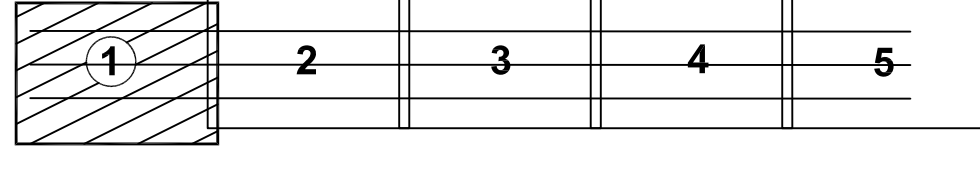
VERTICAL CONTROL
BENCHMARK "Q-481" USC&GS DISK ELEV. 19.54 FT. M.L.L.W.

HORIZONTAL CONTROL
COAST GUARD D-BEACON.

CHANNEL ANGLE POINTS - NAD 83		
CHANNEL	EAST	NORTH
A	5942376.6491	2108540.1149
B	5943012.7491	2106643.9149
C	5967229.2491	2116876.3149
D	5967865.3491	2114980.1149

CENTERLINE ANGLE POINTS - NAD 83		
CENTERLINE	EAST	NORTH
C1	5942694.6491	2107592.0149
C2	5967547.2491	2115928.2149

SHEET INDEX



N 37°54'30"

N 122°37'45"

N 37°45'45"