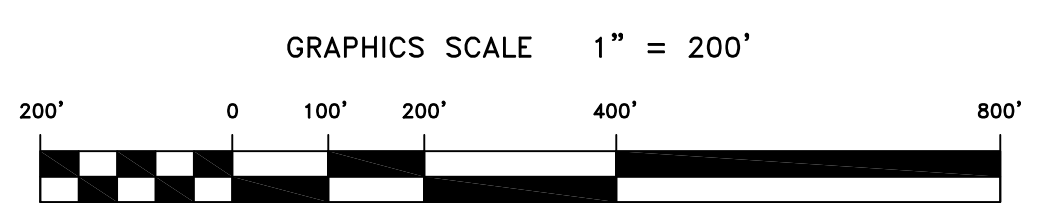
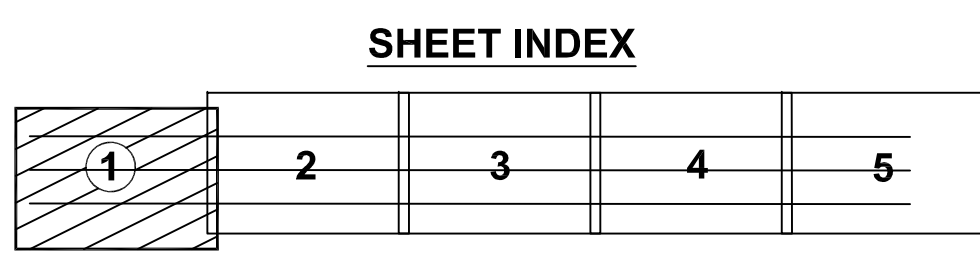


**PRELIMINARY ISSUE**  
THIS PLAN ISSUED FOR  
ADVANCE INFORMATION ONLY

**NOTES:**  
DRAWINGS NOT TO BE USED AS NAVIGATION. ONLY CHANNEL CONDITION AT DATE OF SURVEY. THE LOCATION OF ALL NAVIGATION AIDS ARE BASED ON INFORMATION PROVIDED BY THE U.S. COAST GUARD. BUOY LOCATIONS REPRESENT THE POSITION OF THE SINKER ONLY.  
SURVEYED BY THE CORPS OF ENGINEERS, 15-17 JULY 2009.  
SOUNDINGS ARE TAKEN BY FATHOMETER AND ARE SHOWN TO THE NEAREST FOOT AND TENTHS OF A FOOT.  
SOUNDINGS ARE BASED ON THE DATUM OF MEAN LOWER LOW WATER AT THE LOCALITY. NAVD 88.  
PLANE GRID AND COORDINATES ARE BASED ON LAMBERT PROJECTION, ZONE III NAD83, CALIFORNIA, AS DESCRIBED IN SPECIAL PUBLICATION NO. 235, PUBLISHED BY THE NATIONAL OCEAN SURVEY.  
THE PROJECT DEPTH IS 55 FEET AT M.L.L.W.  
SOUNDINGS ARE BASED TIDE GAUGE LOCATED AT THE HYDE STREET PIER, SAN FRANCISCO, CALIFORNIA.  
VERTICAL CONTROL BENCHMARK "Q-481" USC&GS DISK ELEV. 19.527 M.L.L.W.  
HORIZONTAL CONTROL COAST GUARD D-BEACON.

CHANNEL ANGLE POINTS - NAD 83		
CHANNEL ∠	EAST	NORTH
A	5942376.6491	2108540.1149
B	5943012.7491	2106643.9149
C	5967229.2491	2116876.3149
D	5967865.3491	2114980.1149

CENTERLINE ANGLE POINTS - NAD 83		
CENTERLINE ∠	EAST	NORTH
C1	5942694.6491	2107592.0149
C2	5967547.2491	2115928.2149



US Army Corps  
of Engineers  
San Francisco District  
1455 Market Street  
San Francisco, CA 94103

Mark	Description	Date	Appr.

<b>SUBMITTED:</b>	PC	<b>CHECKED BY:</b>	TJV	<b>DRAWN BY:</b>	EWC
<b>DESIGNED BY:</b>	Hyde Survey Team Leader	<b>DATE:</b>	7/21/2009	<b>SHEET NO.:</b>	1 OF 5
<b>APPROVAL RECOMMENDED:</b>	CH4, Technical Support Section	<b>PREPARED UNDER THE DIRECTION OF:</b>	LAURENCE M. FARRELL	<b>DRAWING NO.:</b>	716
<b>APPROVED:</b>		<b>LT. COLONEL, C.E., DISTRICT ENGINEER</b>			

SAN FRANCISCO BAR  
CALIFORNIA  
**SAN FRANCISCO MAINSHIP CHANNEL**  
CONDITION SURVEY  
15-17 JULY 2009

Sheet reference number  
**C1**