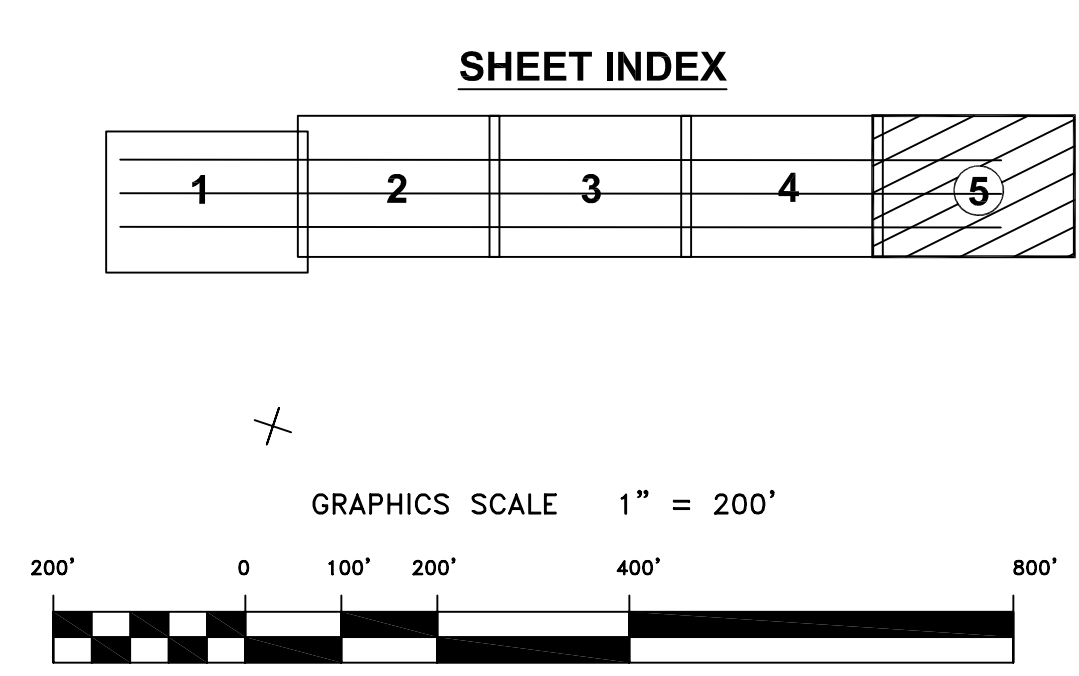


PRELIMINARY ISSUE
THIS PLAN ISSUED FOR
ADVANCE INFORMATION ONLY



US Army Corps
of Engineers
San Francisco District
1455 Market Street
San Francisco, CA 94103

Mark	Description	Date	Appr.

SUBMITTED: MC Hydro Survey Team Leader	DESIGNED BY: TVW	CHECKED BY: EWC	DRAWN BY:	DRAWING NO.	
				1	2
APPROVAL RECOMMENDED:	DATE:	3/19/2008	SHEET NO.	5 OF 5	701
APPROVED:	PREPARED UNDER THE DIRECTION OF CRAIG W. KILLEY LT. COLONEL, C.E., DISTRICT ENGINEER				
Chief, Construction Branch					

SAN FRANCISCO BAR
CALIFORNIA
SAN FRANCISCO MAINSHIP CHANNEL
CONDITION SURVEY
3-4 MARCH 2008

Sheet reference number
C5