

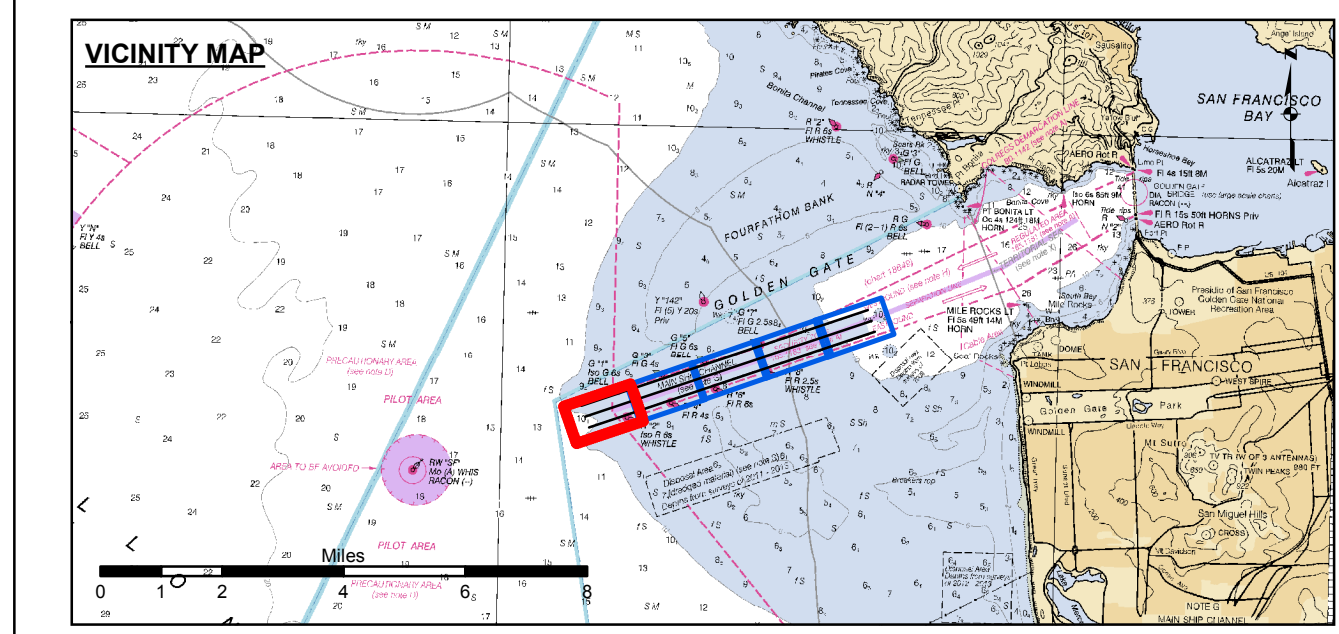
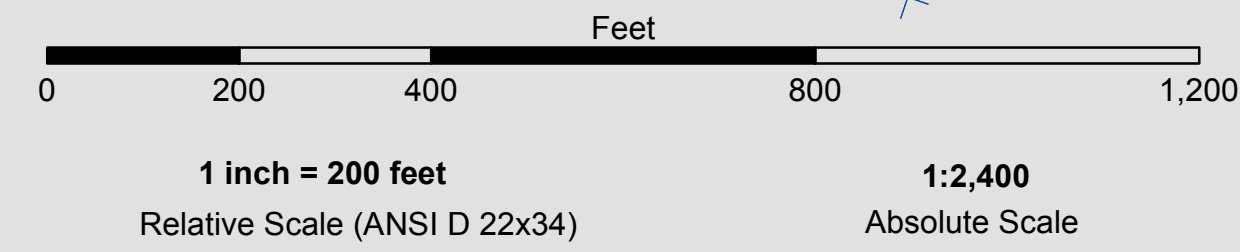
CHANNEL ANGLE POINTS - NAD 83

CHANNEL ∠	EAST	NORTH
A	5942376.6491	2108540.1149
B	5943012.7491	2106643.9149
C	5967229.2491	2116876.3149
D	5967865.3491	2114980.1149

CENTERLINE ANGLE POINTS - NAD 83

CENTERLINE ∠	EAST	NORTH
C1	5942694.6491	2107592.0149
C2	5967547.2491	2115928.2149

PRELIMINARY ISSUE
THIS PLAN ISSUED FOR
ADVANCE INFORMATION ONLY



- Federal Navigation Channel
- Shoaling Area
- Placement Area
- Anchorage Area
- Wreck Area
- Submerged Wreck
- Angle Point
- Beacon, General
- Obstruction Point
- Navigation Buoy
- Navigation Buoy
- Shoalest Sounding*
- Contour Lines 51
- Contour Lines 52
- Contour Lines 53
- Contour Lines 54
- Contour Lines 55

DRAWINGS NOT TO BE USED AS NAVIGATION. ONLY CHANNEL CONDITION AT DATE OF SURVEY. THE LOCATION OF ALL NAVIGATION AIDS ARE BASED ON INFORMATION PROVIDED BY THE U.S. COAST GUARD. BUOY LOCATIONS REPRESENT THE POSITION OF THE SINKER ONLY.

SURVEYED BY THE CORPS OF ENGINEERS.

SOUNDINGS ARE TAKEN BY FATHOMETER AND ARE SHOWN TO THE NEAREST FOOT AND TENTHS OF A FOOT.

SOUNDINGS ARE BASED ON THE DATUM OF MEAN LOWER LOW WATER AT THE LOCALITY.

PLANE GRID AND COORDINATES ARE BASED ON LAMBERT PROJECTION, ZONE III NAD83, CALIFORNIA, AS DESCRIBED IN SPECIAL PUBLICATION NO. 235, PUBLISHED BY THE NATIONAL OCEAN SURVEY.

THE PROJECT DEPTH IS 55 FEET AT M.L.L.W.

SOUNDINGS ARE BASED TIDE GAUGE LOCATED AT THE HYDE STREET PIER, SAN FRANCISCO, CALIFORNIA.

CONTROL:
Bonita 01 201337 49 10.915N, 122 31 51.344W
MLLW: 258.42 ft (VDatum)
WGS84: 46.188m

941 4290 N TIDAL
37 48 20.200N, 122 28 00.811W
MLLW: 11.92 ft
WGS84: -28.901m
NOAA ONLINE TIDE STATION 941 4290

POSITIONING:
HORIZONTAL: RTK
VERTICAL: RTK Tides
BASE STATION AT BONITA 01 2013
TIDE VERIFIED AT "TG 1" - NAIL SET AT 10.0 ft MLLW ON NOAA TIDE STATION PIER



DISCLAIMER
The United States Government furnishes this information as a service to the public. It is not intended to be used for any purpose other than that for which it was prepared. The United States Government makes no warranty, expressed or implied, concerning the accuracy, completeness, or reliability of the information. The user is responsible for the results of any application of the information. The United States Government will not be liable for any damages, including consequential, arising from the use of the information. This disclaimer applies to all users of the information. The recipient may not transfer these data to others without also transferring this disclaimer.

PREPARED UNDER THE DIRECTION OF
JOHN C. MORROW
LT COLONEL, C.E., DISTRICT ENGINEER

Chart Date:	Jul 03, 2014
Designed by:	PDT
Plotted by:	PDT
Checked by:	PDT
Drawn by:	PDT

SAN FRANCISCO BAY
SAN FRANCISCO
CALIFORNIA
MAINSHIP CHANNEL
POSTDREDGE SURVEY
20-25 June 2014

Sheet Reference Number
1 of 5