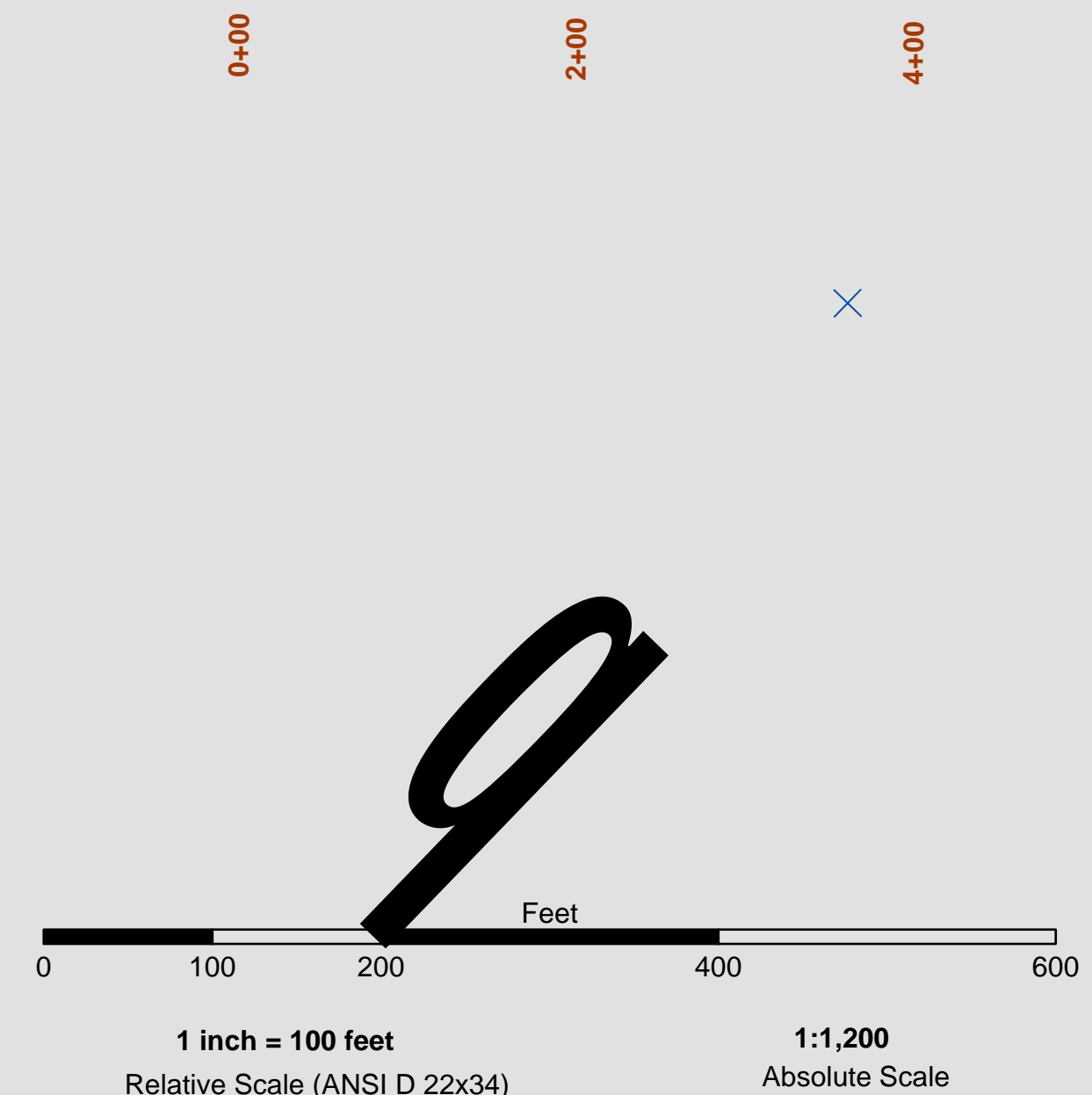


DISCLAIMER
 The United States Government furnishes this information as a public service. It is not intended to be used for any purpose other than that for which it was prepared. The user assumes all liability for any use of this information. The user is responsible for the results of any application of the data for other than its intended purpose. The user is responsible for the results of any application of the data for other than its intended purpose. The user is responsible for the results of any application of the data for other than its intended purpose.



PRELIMINARY ISSUE
 THIS PLAN ISSUED FOR
 ADVANCE INFORMATION ONLY

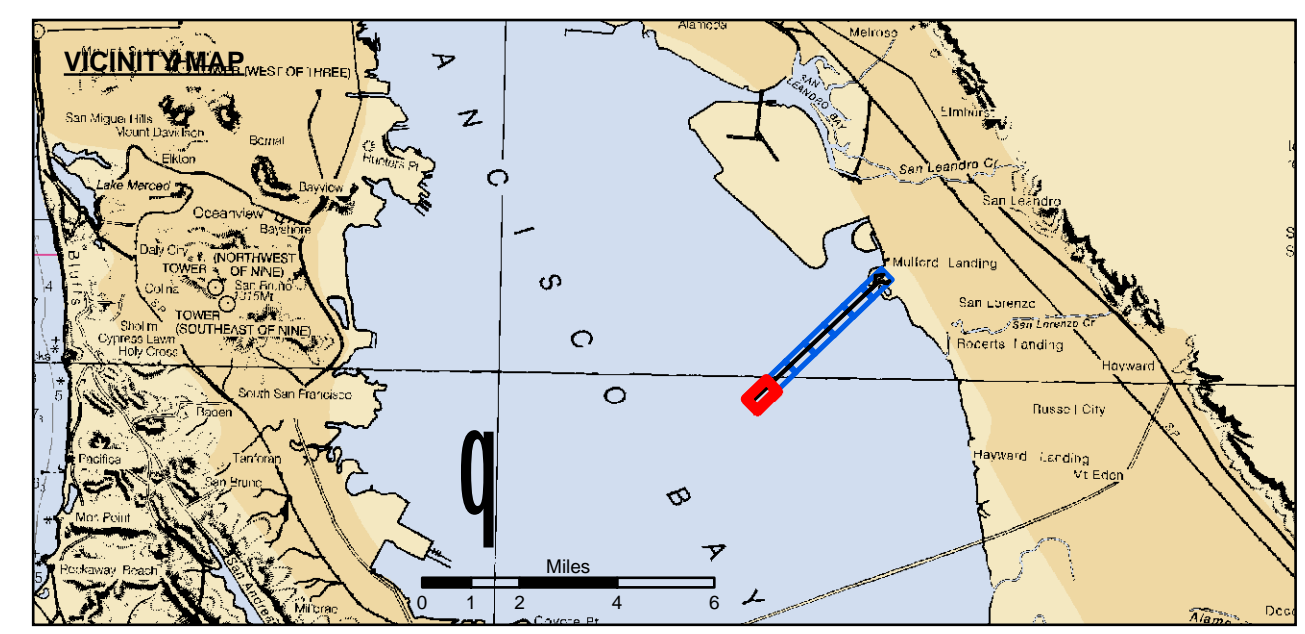
NAD 1983 CHANNEL ANGLE POINTS

∠ PT	X	Y
1	6058419.54	2067068.74
2	6071361.14	2079289.84
3	6071883.64	2079783.24
4	6071883.64	2080789.44
5	6072216.54	2080779.64
6	6072883.24	2080871.74
7	6072900.24	2080757.94
8	6072236.44	2080653.24
9	6072023.64	2080619.64
10	6072023.64	2079926.04
11	6072838.44	2080189.34
12	6072884.54	2080046.54
13	6072966.44	2079967.44
14	6073546.44	2080087.44
15	6073326.44	2079917.44
16	6073296.44	2079807.44
17	6072966.44	2079837.44
18	6072708.84	2079989.84
19	6072229.64	2079834.94
20	6072031.97	2078643.22
21	6072032.24	2079639.14
22	6071539.34	2079174.04
23	6071434.84	2079109.84
24	6063027.14	2071176.04
25	6062920.74	2071041.24
26	6059556.84	2066923.34

NAD 1983 CENTERLINE ANGLE POINTS

∠ PT	X	Y
C1	6058488.24	2066996.04
C2	6071429.04	2079214.34
C3	6071957.94	2079711.24
C4	6071953.64	2080864.54
C5	6072226.44	2080716.44
C6	6072991.74	2080814.84
C-1	6072025.98	2079847.96
C-2	6072735.54	2080077.24
C-3	6072922.04	2079894.94
C-4	6073263.34	2079936.84
C-5	6073516.44	2080132.44

Federal Navigation Channel	Beacon, General	Contours
Shoaling Area	Obstruction Point	-7
Placement Area	Navigation Buoy	-6
Anchorage Area	Navigation Buoy	-5
Wreck Area	Shoalest Sounding*	-4
Submerged Wreck		-3
Angle Point		



NOTES:
 HORIZONTAL COORDINATE SYSTEM: PLANE GRID AND COORDINATES ARE BASED ON LAMBERT PROJECTION, NAD 83, ZONE III CALIFORNIA AS DESCRIBED IN SPECIAL PUBLICATION NO. 235, PUBLISHED BY THE NATIONAL OCEAN SURVEY.
 THE INFORMATION DEPICTED ON THIS MAP REPRESENTS THE RESULTS OF A SURVEY CONDUCTED ON THE DATE INDICATED AND CAN ONLY BE CONSIDERED TO REPRESENT THE GENERAL CONDITION EXISTING AT THAT TIME.
 BASE MAPS ARE USDA NAIP 2010.
 *SHOALEST SOUNDING PER QUARTER PER REACH

DRAWING NOT TO BE USED FOR NAVIGATION. ONLY CHANNEL CONDITION AT DATE OF SURVEY. THE LOCATION OF ALL NAVIGATION AIDS ARE BASED ON INFORMATION PROVIDED BY THE U.S. COAST GUARD. BUOY LOCATIONS REPRESENT THE POSITION OF THE SINKER ONLY. SOUNDINGS WERE TAKEN BY FATHOMETER AND ARE SHOWN TO THE NEAREST TENTH OF A FOOT. SOUNDINGS ARE BASED ON THE DATUM OF MEAN LOWER LOW WATER AT THE LOCALITY.
 SURVEYED BY THE CORPS OF ENGINEERS.
 THE PROJECT DEPTHS ARE AS FOLLOWS:
 MAIN CHANNEL (0+00 TO 178+00) - 6 FT
 (178+00 TO 185+23) - 7 FT
 MARINA CHANNEL - 7 FT
 POCKETING WILL NOT BE PERMITTED OUTSIDE CHANNEL LIMITS TO ACCOMMODATE BARGES AT LOW TIDE.
 CONTROL:
 NOAA GAUGE 941 4688 - SAN LEANDRO MARINA
 TIDAL BM 4 1974
 FID: HTZ331
 MLLW: 17.54 ft
 HORIZONTAL: CG DGPS
 TIDES: SAN LEANDRO TIDE GAUGE - MARK ON PILING AT MASTER DOCK - 10.2FT MLLW

Prepared Under the Direction of JOHN K. MORROW LT COLONEL, C.E., DISTRICT ENGINEER	Surveyed By: PDT	Chart Date: Apr 14, 2015
Submitted: Hydro Survey Team Leader	Plotted By: PDT	Designed by: PDT
Recommended: Chief, Hydro Survey Section	Checked By: PDT	Drawn by: PDT
Approved: Chief, Construction Branch		

ALAMEDA COUNTY
JACK D. MALTESTER CHANNEL
 SAN LEANDRO MARINA
 CONDITION SURVEY
 30 MARCH - 01 APRIL 2015

Sheet Reference Number
 1 of 7