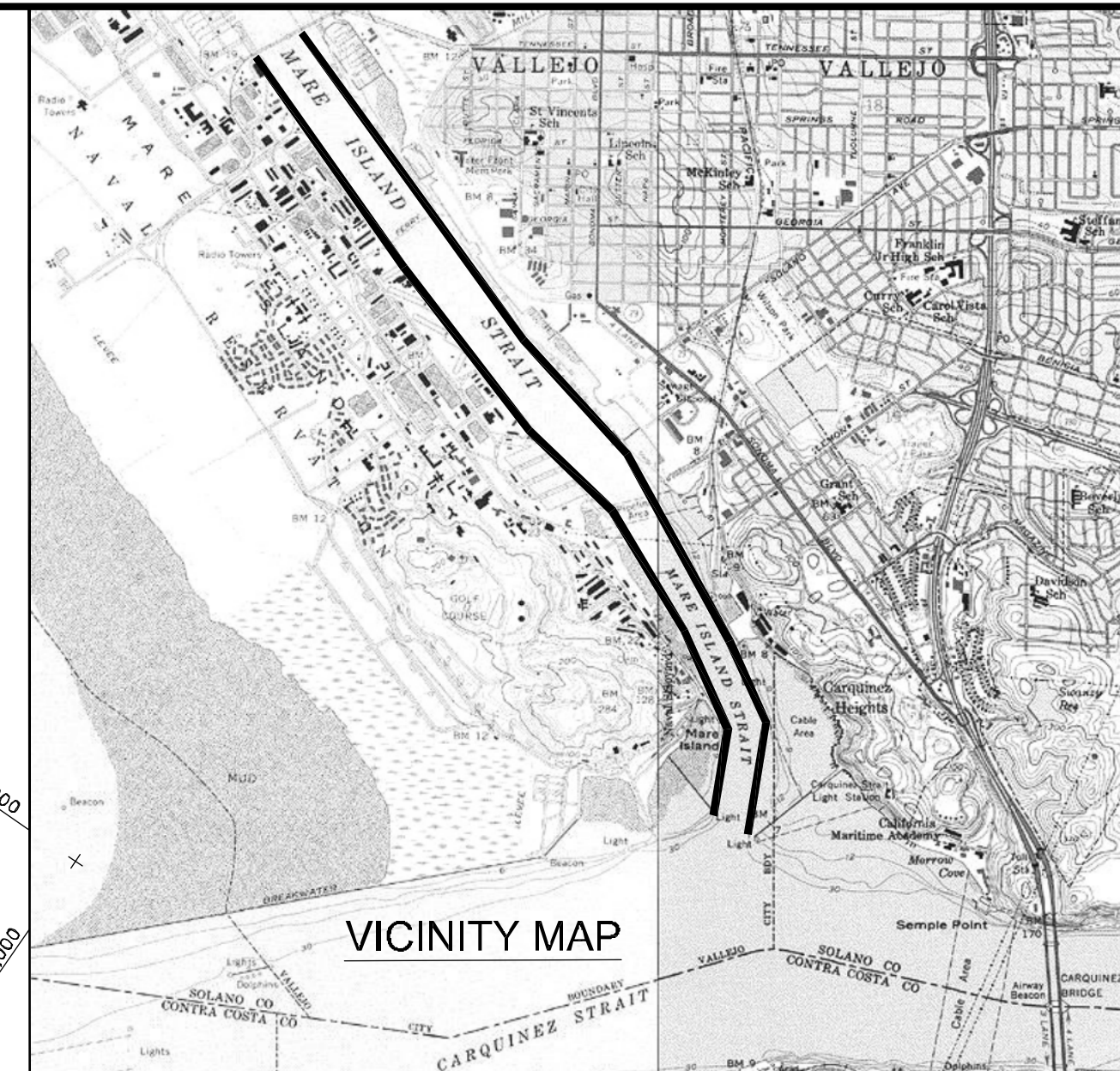
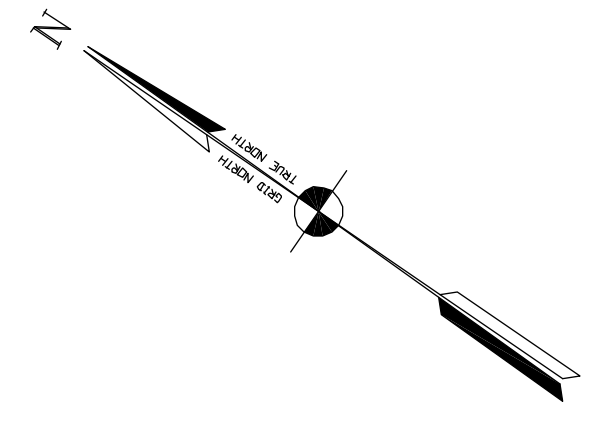


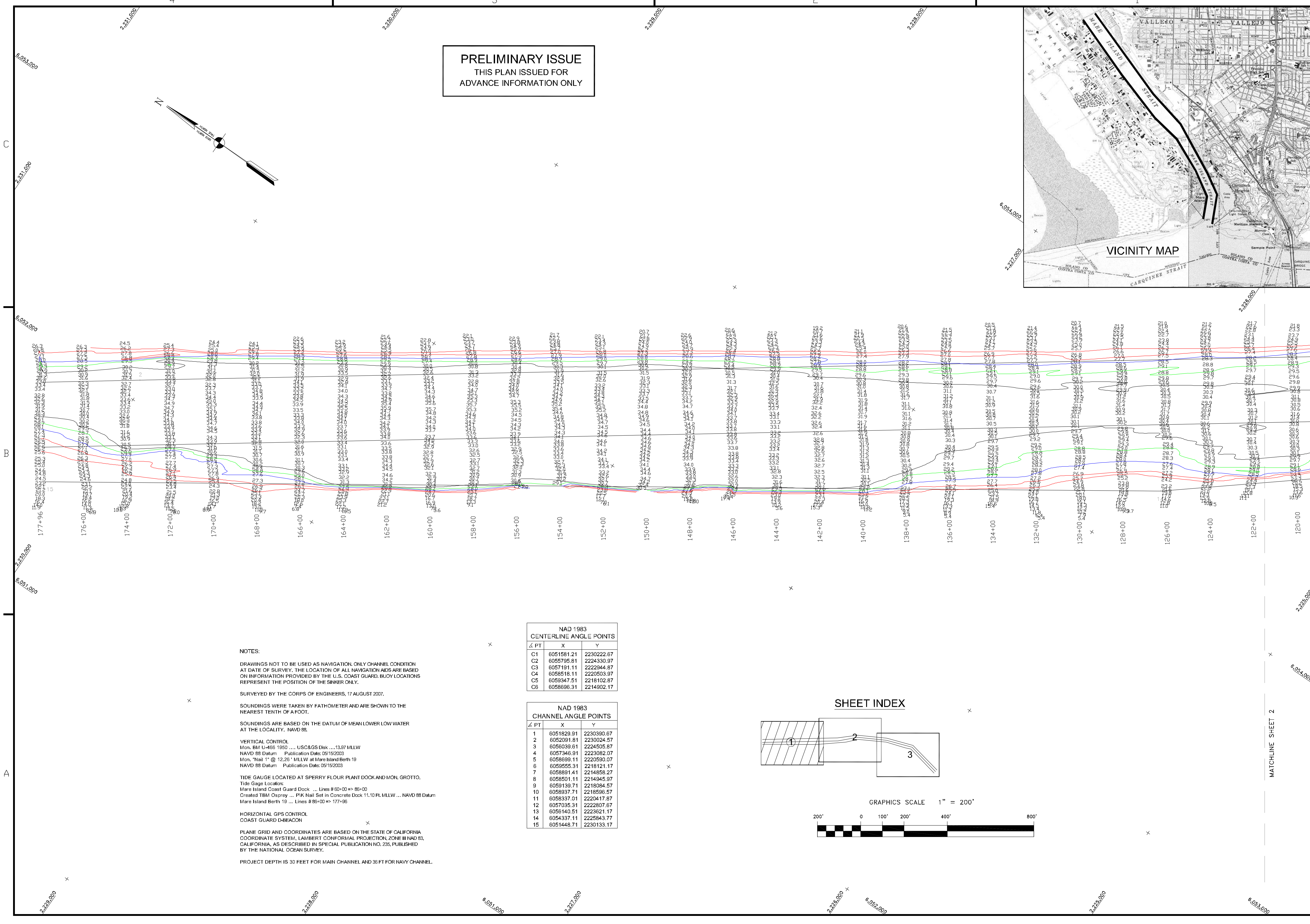
PRELIMINARY ISSUE
THIS PLAN ISSUED FOR
ADVANCE INFORMATION ONLY



US Army Corps
of Engineers
San Francisco District
1455 Market Street
San Francisco, CA 94103

Mark	Description	Date	Appr.

DESIGNED BY:	MC	CHECKED BY:	TYW	DRAWN BY:	EVC
DATE:	8/14/2008	SHEET NO.:	1 OF 3	DRAWING NO.:	2 445
APPROVAL RECOMMENDED:		PREPARED UNDER THE DIRECTION OF			
APPROVED:		LAURENCE M. FARRELL			
		LT. COLONEL, C.E., DISTRICT ENGINEER			



NOTES:

DRAWINGS NOT TO BE USED AS NAVIGATION. ONLY CHANNEL CONDITION AT DATE OF SURVEY. THE LOCATION OF ALL NAVIGATION AIDS ARE BASED ON INFORMATION PROVIDED BY THE U.S. COAST GUARD. BUOY LOCATIONS REPRESENT THE POSITION OF THE SINKER ONLY.

SURVEYED BY THE CORPS OF ENGINEERS, 17 AUGUST 2007.

SOUNDINGS WERE TAKEN BY FATHOMETER AND ARE SHOWN TO THE NEAREST TENTH OF A FOOT.

SOUNDINGS ARE BASED ON THE DATUM OF MEAN LOWER LOW WATER AT THE LOCALITY. NAVD 88.

VERTICAL CONTROL
Mon. BM U-466 1950 ... USC&GS Disk ... 13.87 MLLW
NAVD 88 Datum Publication Date: 05/15/2003
Mon. "Nail 1" @ 12.26' MLLW at Mare Island Berth 19
NAVD 88 Datum Publication Date: 05/15/2003

TIDE GAUGE LOCATED AT SPERRY FLOUR PLANT DOCK AND MON. GROTTO.
Tide Gage Location:
Mare Island Coast Guard Dock ... Lines # 60+00 => 85+00
Created: TMU Osprey ... P/K Nail Set in Concrete Dock 11.10 FL MLLW ... NAVD 88 Datum
Mare Island Berth 19 ... Lines # 85+00 => 177+96

HORIZONTAL GPS CONTROL
COAST GUARD D-BEACON

PLANE GRID AND COORDINATES ARE BASED ON THE STATE OF CALIFORNIA COORDINATE SYSTEM, LAMBERT CONFORMAL PROJECTION, ZONE III NAD 83, CALIFORNIA, AS DESCRIBED IN SPECIAL PUBLICATION NO. 235, PUBLISHED BY THE NATIONAL OCEAN SURVEY.

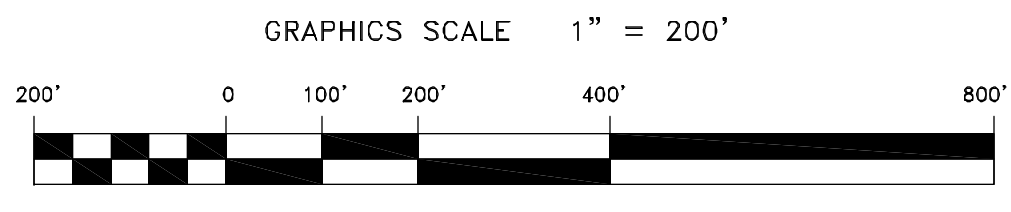
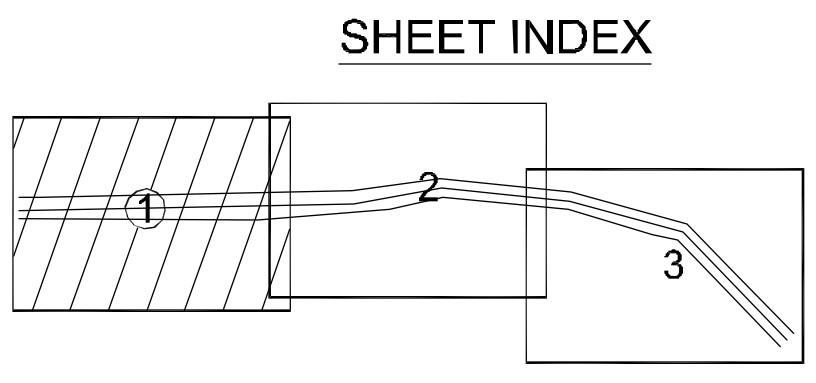
PROJECT DEPTH IS 30 FEET FOR MAIN CHANNEL AND 36 FT FOR NAVY CHANNEL.

NAD 1983
CENTERLINE ANGLE POINTS

△ PT	X	Y
C1	6051581.21	2230222.67
C2	6055795.81	2224330.97
C3	6057191.11	2222944.87
C4	6058518.11	2220503.97
C5	6059347.51	2218102.87
C6	6058696.31	2214902.17

NAD 1983
CHANNEL ANGLE POINTS

△ PT	X	Y
1	6051829.91	2230390.67
2	6052091.81	2230024.57
3	6056039.61	2224505.87
4	6057346.91	2223082.07
5	6058699.11	2220590.07
6	6059555.31	2218121.17
7	6058931.41	2214658.27
8	6058501.11	2214945.97
9	6059139.71	2218084.57
10	6058937.71	2218596.57
11	6058337.01	2220417.87
12	6057035.31	2222807.67
13	6056140.51	2223621.17
14	6054337.11	2225543.77
15	6051448.71	2230133.17



SOLANO COUNTY CALIFORNIA
MARE ISLAND STRAIT
CONDITION SURVEY
17 AUGUST 2007

Sheet reference number
C1