

NAD 83 CHANNEL ANGLE POINTS		
△ PT	X	Y
1	6262013.56	1874718.23
2	6258560.66	1874718.23
3	6258402.46	1874840.43
4	6258258.06	1875392.73
5	6259660.46	1877792.03
6	6259710.96	1877978.33
7	6259710.96	1884605.43
8	6259910.96	1884755.43
9	6260578.56	1884755.43
10	6261582.56	1883294.43
11	6263009.76	1882104.53
12	6263256.76	1881692.93
13	6263229.26	1881583.13
14	6263023.46	1881459.73
15	6262913.76	1881487.13
16	6262666.76	1881898.73
17	6262623.46	1882296.43
18	6261507.96	1883226.43
19	6260732.16	1884355.43
20	6260010.96	1884355.43
21	6259810.96	1884205.43
22	6259810.96	1877851.23
23	6258508.16	1875622.33
24	6258666.86	1875015.23
25	6258921.96	1874818.23
26	6262013.56	1874818.23

NAD 83 CENTERLINE ANGLE POINTS		
△ PT	X	Y
C1	6262013.56	1874768.23
C2	6258741.36	1874772.73
C3	6258534.66	1874927.83
C4	6258383.16	1875507.53
C5	6259760.96	1877864.73
C6	6259760.96	1884405.43
C7	6259960.96	1884555.43
C8	6260655.36	1884555.43
C9	6261545.26	1883260.43
C10	6262655.46	1882334.83
C11	6263126.36	1881521.43

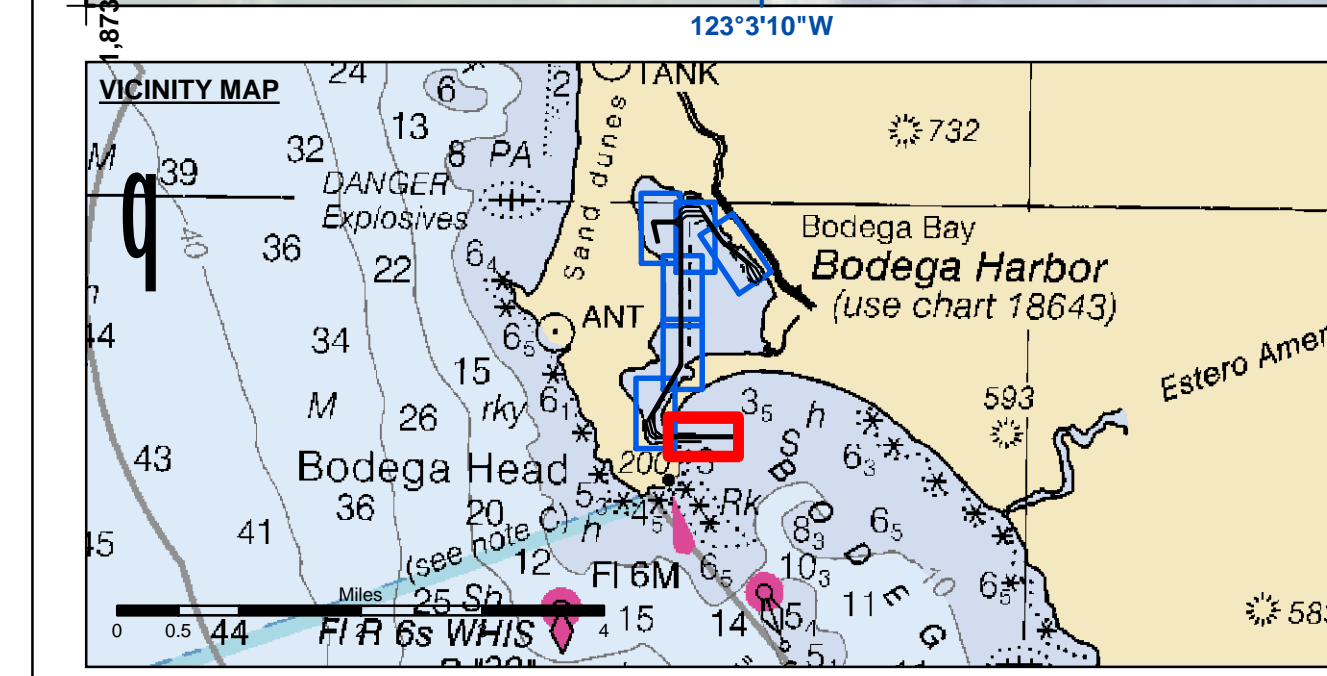
**US Army Corps of Engineers**  
San Francisco District  
1455 Market Street  
San Francisco, CA 94103

**DISCLAIMER**  
The United States Government furnishes this information for the general information of the recipient. The United States Government makes no warranty, expressed or implied, concerning the accuracy, completeness, or timeliness of the information. The user is responsible for the results of any application of the data for other than its intended purpose. The recipient may not transfer this data to others without also transferring this disclaimer.

Chart Date:	Feb 06, 2017
Designed by:	PDT
Plotted by:	PDT
Checked by:	PDT
Drawn by:	PDT

PREPARED UNDER THE DIRECTION OF  
**JOHN C. MORROW**  
LT COLONEL, C.E. DISTRICT ENGINEER  
Subject: Hydro Survey Team Leader  
Recommended: Chief, Hydro Survey Section  
Approved: Chief, Construction Branch

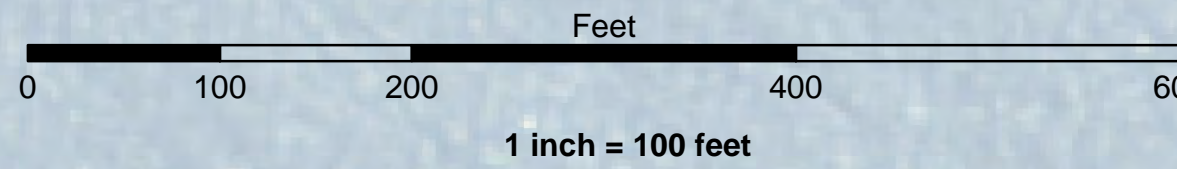
**SONOMA COUNTY**  
**BODEGA BAY CHANNEL**  
**CONDITION SURVEY**  
28-29 JANUARY 2017  
**Sheet Reference Number**  
**1 of 7**

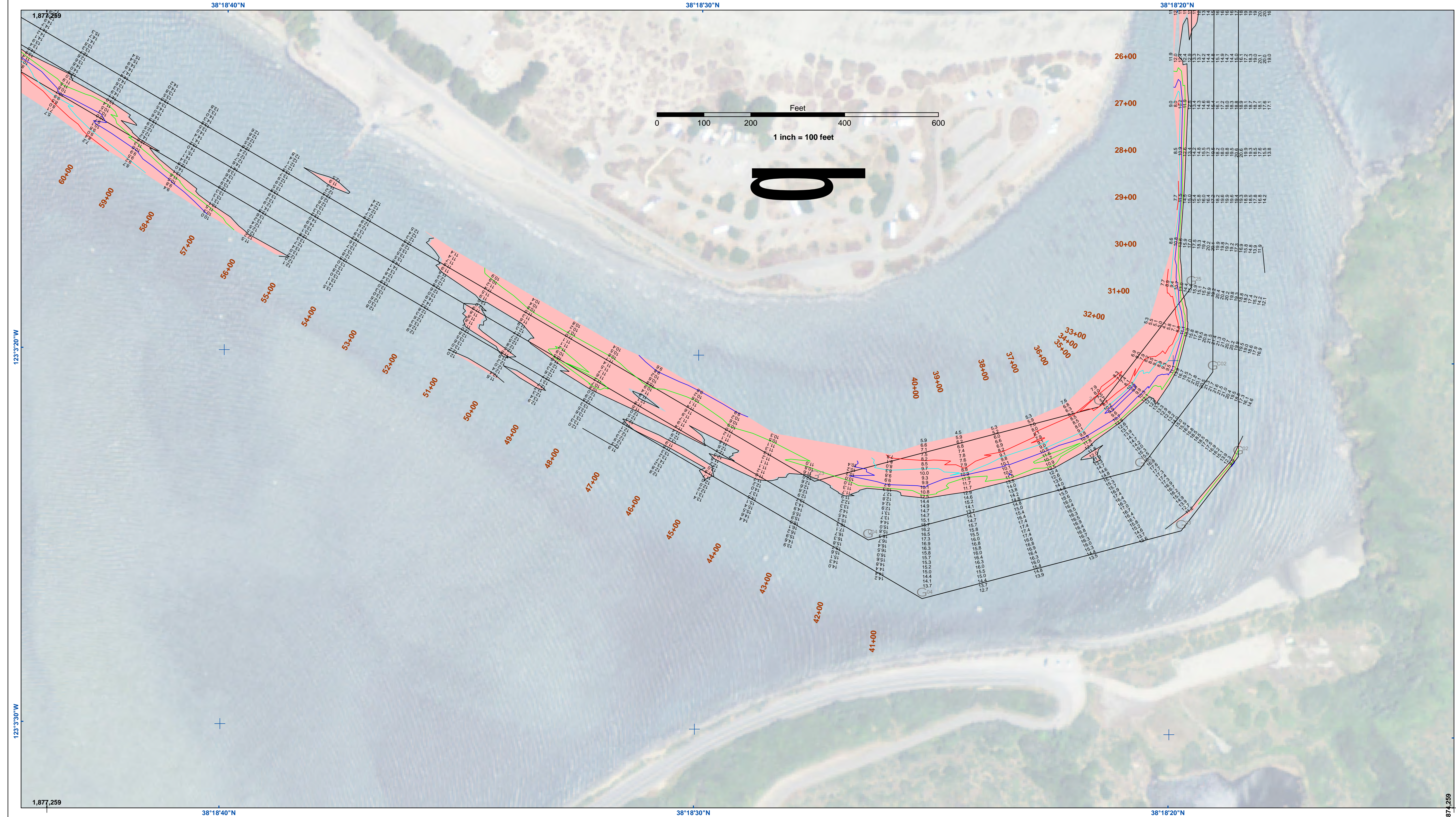


Federal Navigation Channel	Beacon, General	<b>Contours</b>
Shoaling Area	Obstruction Point	-12
Placement Area	Navigation Buoy	-11
Anchorage Area	Navigation Buoy	-10
Wreck Area	Navigation Buoy	-9
Submerged Wreck	Shoalest Sounding*	-8
Angle Point		

**NOTES:**  
HORIZONTAL COORDINATE SYSTEM:  
NORTH AMERICAN DATUM OF 1983 (NAD83), PROJECTED TO THE STATE PLANE COORDINATE SYSTEM (SPCS), CALIFORNIA ZONE II. DISTANCE UNITS IN U.S. SURVEY FEET.  
VERTICAL DATUM:  
SOUNDINGS ARE SHOWN IN FEET AND INDICATE DEPTHS BELOW MEAN LOWER LOW WATER.  
THE INFORMATION DEPICTED ON THIS MAP REPRESENTS THE RESULTS OF A SURVEY CONDUCTED ON THE DATE INDICATED AND CAN ONLY BE CONSIDERED TO REPRESENT THE GENERAL CONDITION EXISTING AT THAT TIME.  
PLANE GRID, BEARING AND COORDINATES ARE BASED ON THE STATE OF CALIFORNIA COORDINATE SYSTEM, LAMBERT CONFORMAL PROJECTION, ZONE II NAD 83, CALIFORNIA, AS DESCRIBED IN SPECIAL PUBLICATION NO. 235, PUBLISHED BY NATIONAL OCEAN SURVEY.  
BASE MAPS ARE USDA NAIP 2010.  
\*SHOALEST SOUNDING PER QUARTER PER REACH

DRAWING NOT TO BE USED FOR NAVIGATION, ONLY CHANNEL CONDITION AT DATE OF SURVEY.  
THE LOCATION OF ALL NAVIGATION AIDS ARE BASED ON INFORMATION PROVIDED BY THE U.S. COAST GUARD. BUOY LOCATIONS REPRESENT THE POSITION OF THE SINKER ONLY.  
SURVEYED BY THE CORPS OF ENGINEERS.  
SOUNDINGS TAKEN BY FATHOMETER AND ARE SHOWN TO THE NEAREST FOOT AND TENTHS OF A FOOT.  
SOUNDINGS ARE BASED ON THE DATUM OF MEAN LOWER LOW WATER AT THE LOCALITY, NAVD 88.  
THE PROJECT DEPTH IS 12 FEET.  
TIDE GAUGE AT BODEGA BAY COAST GUARD STATION DOCK BASED ON ELEVATION OF 17.50' MLLW ON COAST GUARD BRASS CAP PROPERTY CORNER. ELEVATION ESTABLISHED BY DIFFERENTIAL LEVELS RUN FROM "TIDAL 4 = ROAD" USED, 1941, ELEVATION 20.05' MLLW LOCATED IN THE TOWN OF BODEGA BAY.



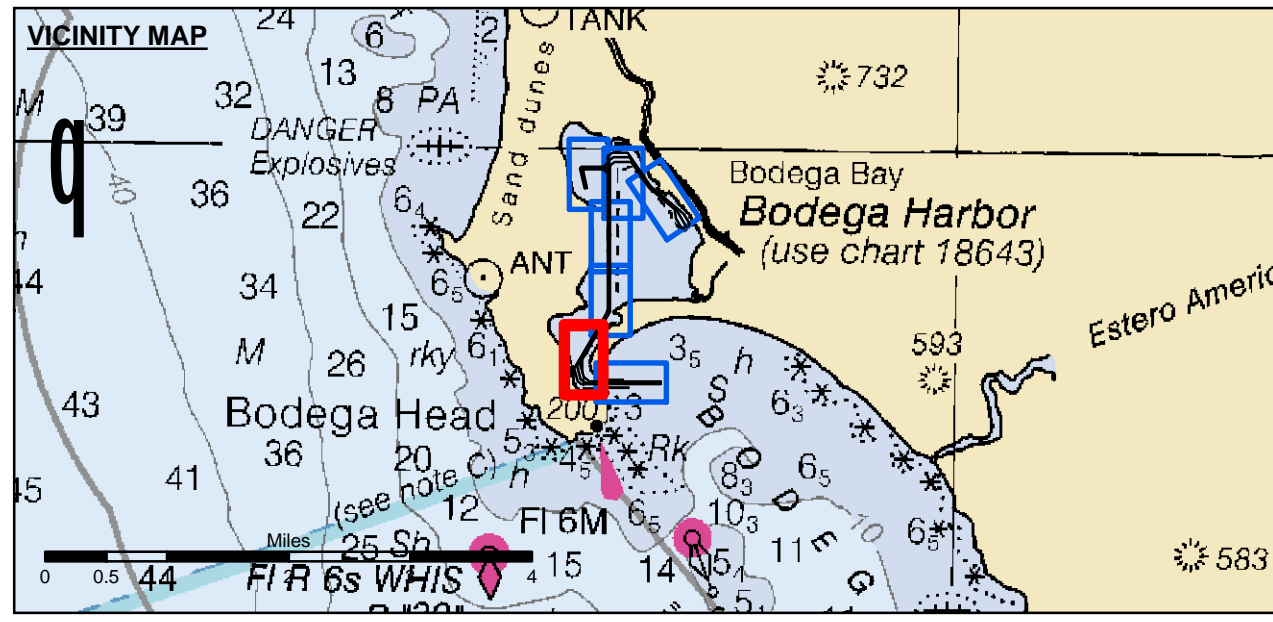


**DISCLAIMER**  
 The United States Government furnishes this information for the purpose of providing accurate and reliable data for the use of the user. The user is responsible for the results of any application of the data for other than its intended purpose. The United States Government makes no warranty, expressed or implied, concerning the accuracy, completeness, or reliability of the information furnished. The United States Government shall not be liable for any damages, including consequential, arising from the use of the information furnished. The recipient may not transfer these data to others without also transferring this disclaimer.

Chart Date:	Feb 06, 2017
Surveyed By:	PDT
Plotted By:	PDT
Checked By:	PDT
Drawn by:	PDT

SONOMA COUNTY  
 CALIFORNIA  
**BODEGA BAY CHANNEL**  
 CONDITION SURVEY  
 28-29 JANUARY 2017

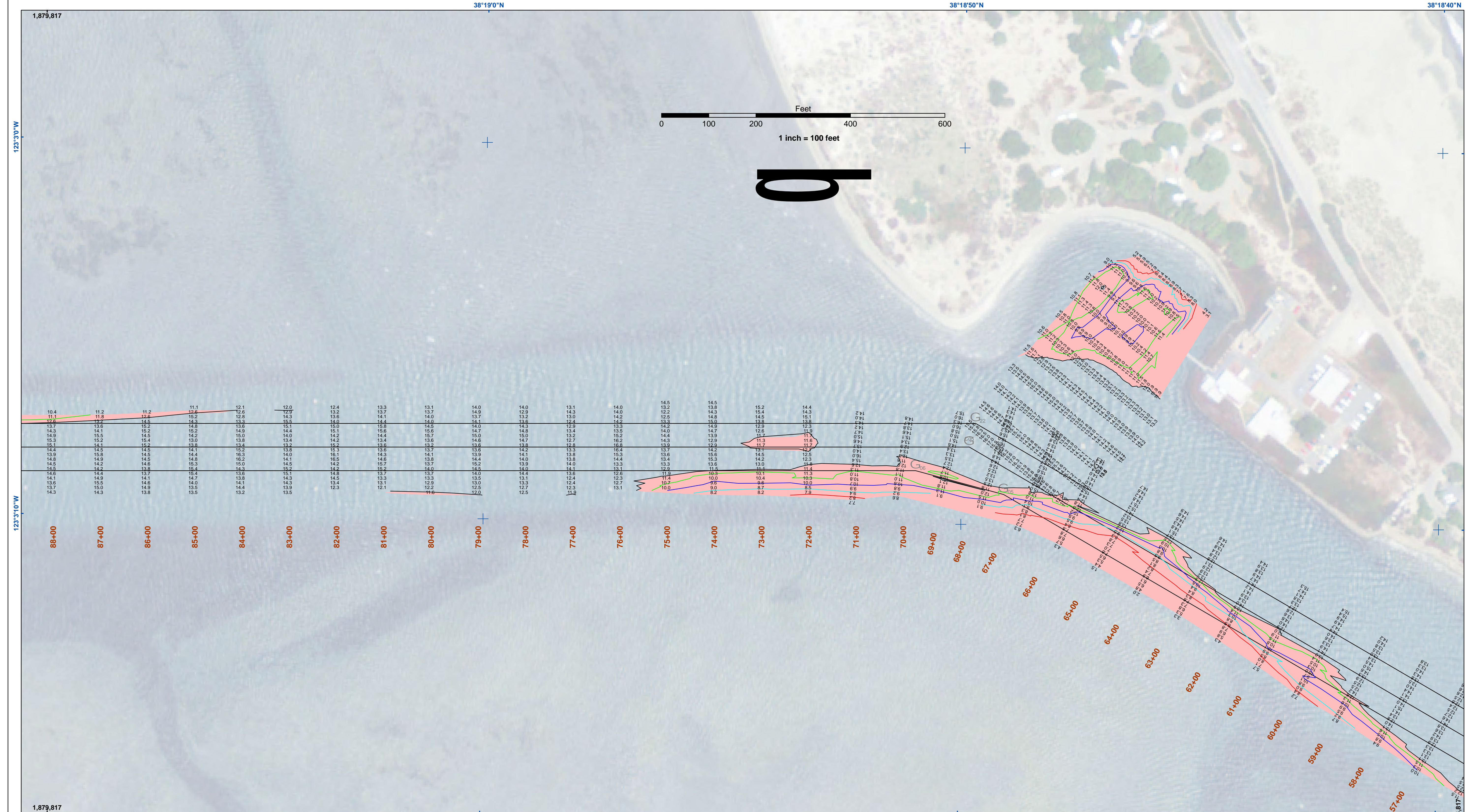
**Sheet Reference Number**  
 2 of 7



- Federal Navigation Channel
- Shoaling Area
- Placement Area
- Anchorage Area
- Wreck Area
- Submerged Wreck
- Angle Point
- Beacon, General
- Obstruction Point
- Navigation Buoy
- Navigation Buoy
- Shoalest Sounding\*
- Contours**
- 12
- 11
- 10
- 9
- 8

**NOTES:**  
 HORIZONTAL COORDINATE SYSTEM:  
 NORTH AMERICAN DATUM OF 1983 (NAD83), PROJECTED TO THE STATE PLANE COORDINATE SYSTEM (SPCS), CALIFORNIA ZONE II. DISTANCE UNITS IN U.S. SURVEY FEET.  
 VERTICAL DATUM:  
 SOUNDINGS ARE SHOWN IN FEET AND INDICATE DEPTHS BELOW MEAN LOWER LOW WATER.  
 THE INFORMATION DEPICTED ON THIS MAP REPRESENTS THE RESULTS OF A SURVEY CONDUCTED ON THE DATE INDICATED AND CAN ONLY BE CONSIDERED TO REPRESENT THE GENERAL CONDITION EXISTING AT THAT TIME.  
 PLANE GRID, BEARING AND COORDINATES ARE BASED ON THE STATE OF CALIFORNIA COORDINATE SYSTEM, LAMBERT CONFORMAL PROJECTION, ZONE II NAD 83, CALIFORNIA, AS DESCRIBED IN SPECIAL PUBLICATION NO. 235, PUBLISHED BY NATIONAL OCEAN SURVEY. BASE MAPS ARE USDA NAIP 2010.  
 \*SHOALEST SOUNDING PER QUARTER PER REACH

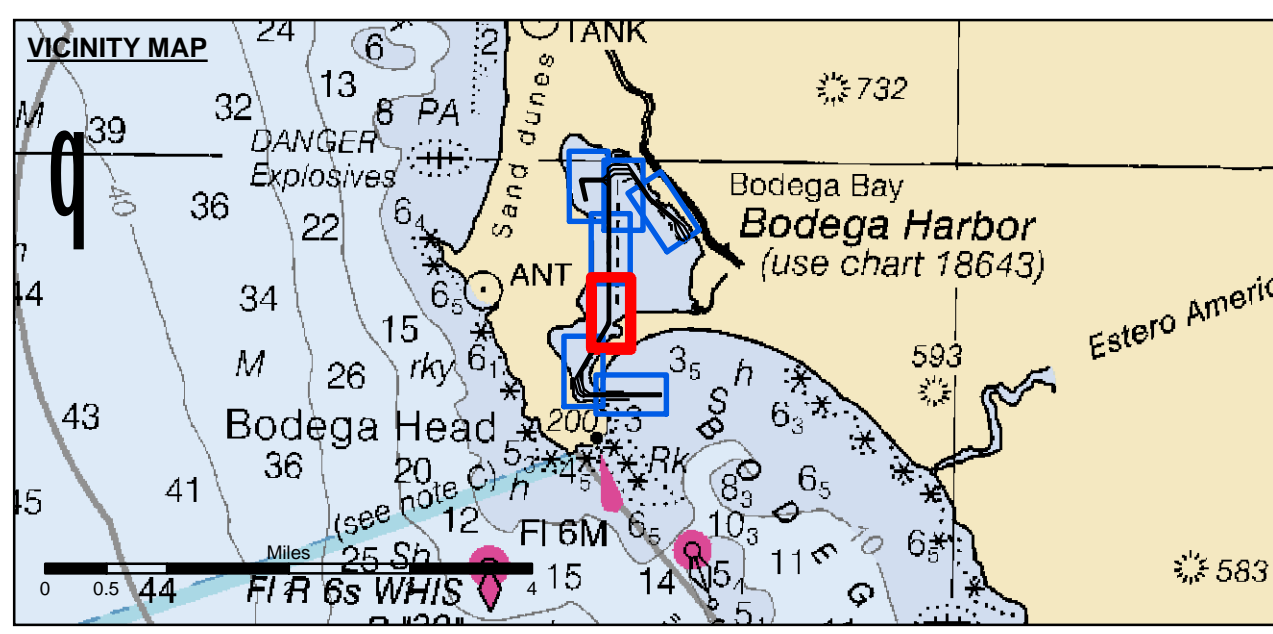
DRAWING NOT TO BE USED FOR NAVIGATION, ONLY CHANNEL CONDITION AT DATE OF SURVEY.  
 THE LOCATION OF ALL NAVIGATION AIDS ARE BASED ON INFORMATION PROVIDED BY THE U.S. COAST GUARD. BUOY LOCATIONS REPRESENT THE POSITION OF THE SINKER ONLY.  
 SURVEYED BY THE CORPS OF ENGINEERS.  
 SOUNDINGS TAKEN BY FATHOMETER AND ARE SHOWN TO THE NEAREST FOOT AND TENTHS OF A FOOT.  
 SOUNDINGS ARE BASED ON THE DATUM OF MEAN LOWER LOW WATER AT THE LOCALITY, NAVD 88.  
 THE PROJECT DEPTH IS 12 FEET.  
 TIDE GAUGE AT BODEGA BAY COAST GUARD STATION DOCK BASED ON ELEVATION OF 17.50' MLLW ON COAST GUARD BRASS CAP PROPERTY CORNER. ELEVATION ESTABLISHED BY DIFFERENTIAL LEVELS RUN FROM "TIDAL 4 = ROAD" USED, 1941. ELEVATION 20.05' MLLW LOCATED IN THE TOWN OF BODEGA BAY.



**US Army Corps of Engineers**  
 San Francisco District  
 1455 Market Street  
 San Francisco, CA 94103

**DISCLAIMER**  
 The United States Government furnishes this information for the general public and does not warrant, express or implied, the accuracy, completeness, or reliability of the information. The user is responsible for the results of any application of the data for other than its intended purpose. The United States Government assumes no liability whatsoever to any person by reason of any use made hereof. These data belong to the Government. Therefore the recipient may not transfer these data to others without also transferring this disclaimer.

Prepared Under the Direction of <b>JOHN C. MORROW</b> LT Colonel, C.E., District Engineer	Chart Date: Feb 06, 2017
Submitted: Hydro Survey Team Leader	Designed by: PDT
Recommended: Chief, Hydro Survey Section	Drawn by: PDT
Approved: Chief, Construction Branch	



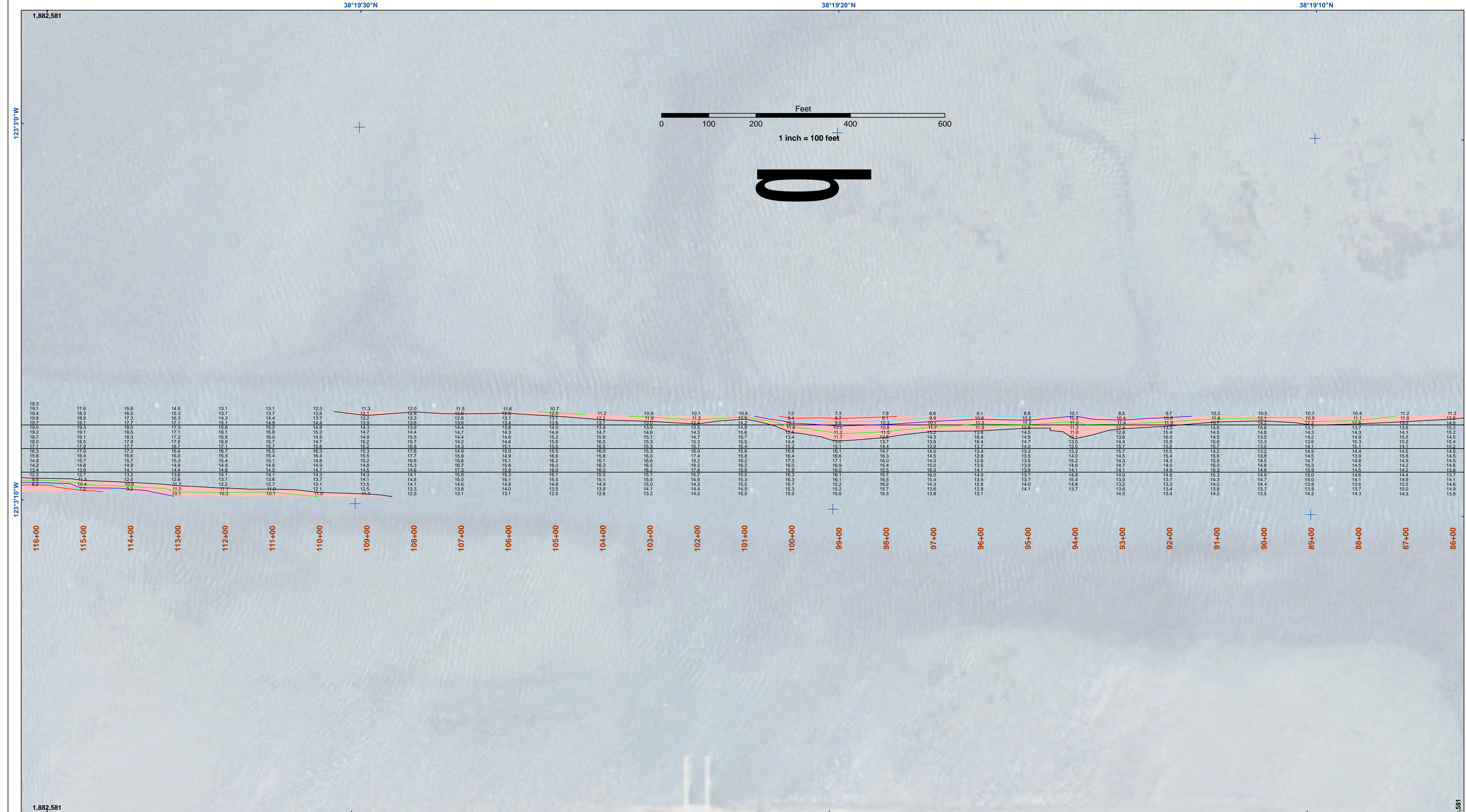
Federal Navigation Channel	Beacon, General	<b>Contours</b>
Shoaling Area	Obstruction Point	-12
Placement Area	Navigation Buoy	-11
Anchorage Area	Navigation Buoy	-10
Wreck Area	Navigation Buoy	-9
Submerged Wreck	Shoalest Sounding*	-8
Angle Point		

**NOTES:**  
 HORIZONTAL COORDINATE SYSTEM:  
 NORTH AMERICAN DATUM OF 1983 (NAD83), PROJECTED TO THE STATE PLANE COORDINATE SYSTEM (SPCS), CALIFORNIA ZONE II. DISTANCE UNITS IN U.S. SURVEY FEET.  
 VERTICAL DATUM:  
 SOUNDINGS ARE SHOWN IN FEET AND INDICATE DEPTHS BELOW MEAN LOWER LOW WATER.  
 THE INFORMATION DEPICTED ON THIS MAP REPRESENTS THE RESULTS OF A SURVEY CONDUCTED ON THE DATE INDICATED AND CAN ONLY BE CONSIDERED TO REPRESENT THE GENERAL CONDITION EXISTING AT THAT TIME.  
 PLANE GRID, BEARING AND COORDINATES ARE BASED ON THE STATE OF CALIFORNIA COORDINATE SYSTEM, LAMBERT CONFORMAL PROJECTION, ZONE II NAD 83, CALIFORNIA, AS DESCRIBED IN SPECIAL PUBLICATION NO. 235, PUBLISHED BY NATIONAL OCEAN SURVEY. BASE MAPS ARE USDA NAIP 2010.  
 \*SHOALEST SOUNDING PER QUARTER PER REACH

DRAWING NOT TO BE USED FOR NAVIGATION, ONLY CHANNEL CONDITION AT DATE OF SURVEY.  
 THE LOCATION OF ALL NAVIGATION AIDS ARE BASED ON INFORMATION PROVIDED BY THE U.S. COAST GUARD. BUOY LOCATIONS REPRESENT THE POSITION OF THE SINKER ONLY.  
 SURVEYED BY THE CORPS OF ENGINEERS.  
 SOUNDINGS TAKEN BY FATHOMETER AND ARE SHOWN TO THE NEAREST FOOT AND TENTHS OF A FOOT.  
 THE PROJECT DEPTH IS 12 FEET.  
 TIDE GAUGE AT BODEGA BAY COAST GUARD STATION DOCK BASED ON ELEVATION OF 17.50' MLLW ON COAST GUARD BRASS CAP PROPERTY CORNER. ELEVATION ESTABLISHED BY DIFFERENTIAL LEVELS RUN FROM "TIDAL 4 = ROAD" USED, 1941. ELEVATION 20.05' MLLW LOCATED IN THE TOWN OF BODEGA BAY.

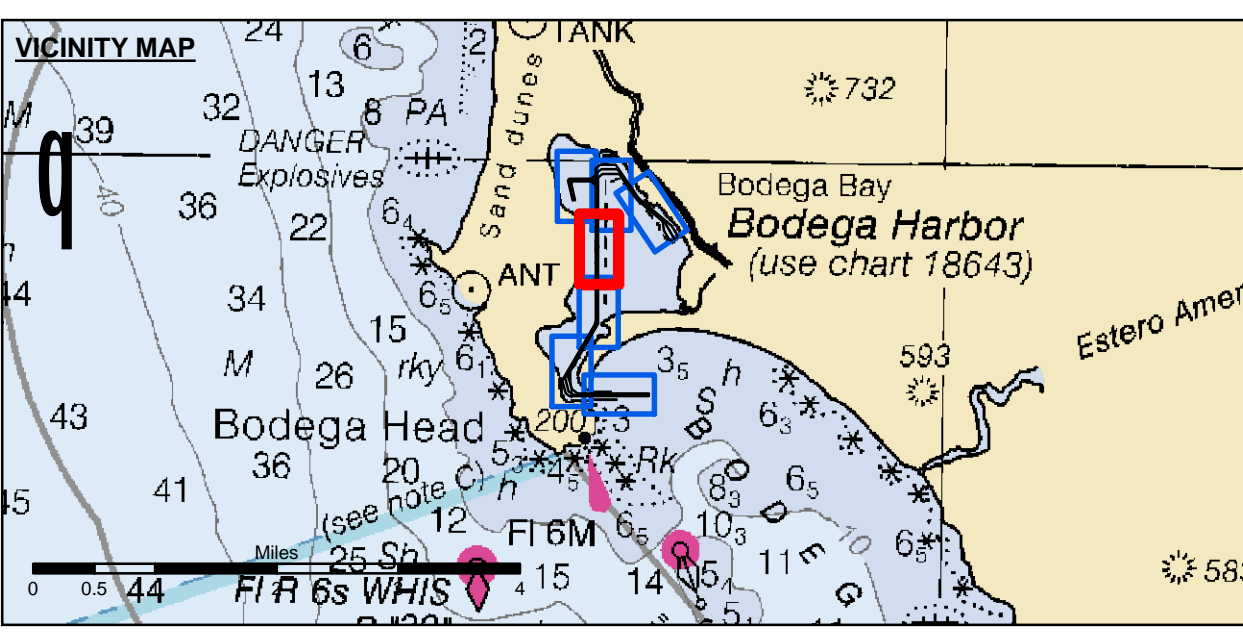
CALIFORNIA  
 SONOMA COUNTY  
**BODEGA BAY CHANNEL**  
 CONDITION SURVEY  
 28-29 JANUARY 2017

**Sheet Reference Number**  
 3 of 7



**DISCLAIMER**  
 The United States Government furnishes this information for the purpose of providing accurate and reliable data for the use of the user. The user is responsible for the results of any application of the data for other than its intended purpose. The United States Government makes no warranty, expressed or implied, concerning the accuracy, completeness, or reliability of the data furnished. The United States Government shall not be liable for any damages, including consequential damages, arising from the use of the data. These data belong to the Government. Therefore the recipient may not transfer these data to others without also transferring this disclaimer.

Chart Date:	Feb 06, 2017
Designed by:	PDT
Drawn by:	PDT
Checked by:	PDT
Approved:	Chief, Construction Branch



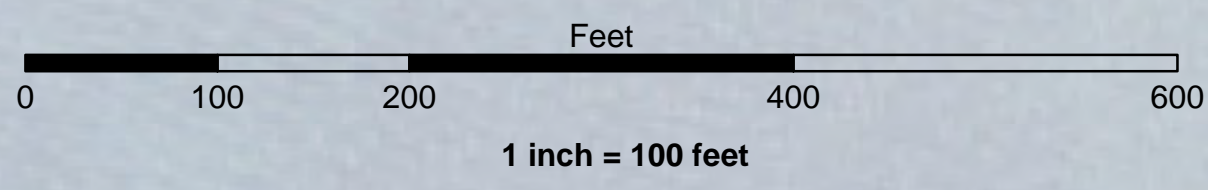
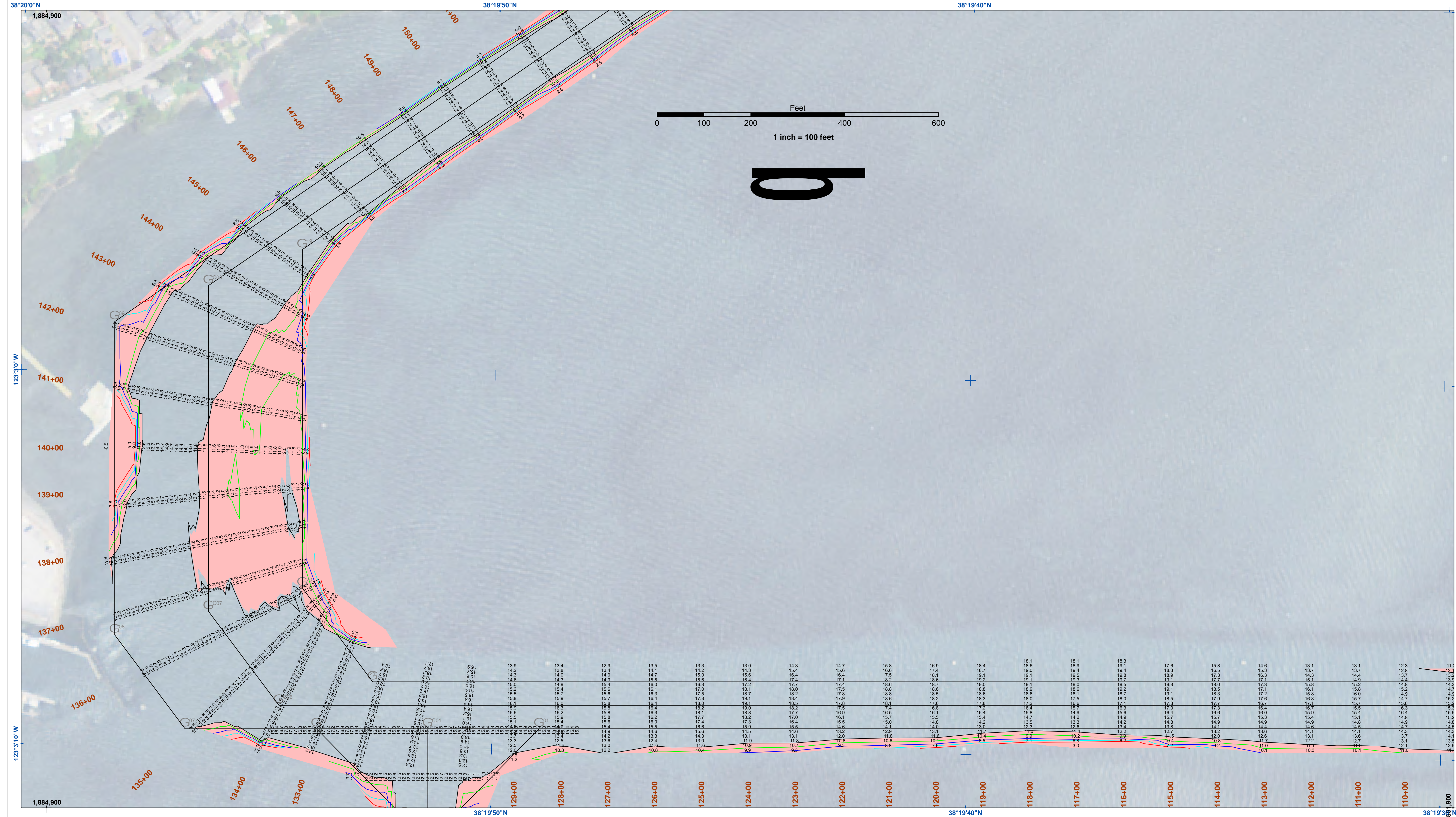
Federal Navigation Channel	Beacon, General	<b>Contours</b>
Shoaling Area	Obstruction Point	-12
Placement Area	Navigation Buoy	-11
Anchorage Area	Navigation Buoy	-10
Wreck Area	Navigation Buoy	-9
Submerged Wreck	Shoalest Sounding*	-8
Angle Point		

**NOTES:**  
 HORIZONTAL COORDINATE SYSTEM:  
 NORTH AMERICAN DATUM OF 1983 (NAD83), PROJECTED TO THE STATE PLANE COORDINATE SYSTEM (SPCS), CALIFORNIA ZONE II. DISTANCE UNITS IN U.S. SURVEY FEET.  
 VERTICAL DATUM:  
 SOUNDINGS ARE SHOWN IN FEET AND INDICATE DEPTHS BELOW MEAN LOWER LOW WATER.  
 THE INFORMATION DEPICTED ON THIS MAP REPRESENTS THE RESULTS OF A SURVEY CONDUCTED ON THE DATE INDICATED AND CAN ONLY BE CONSIDERED TO REPRESENT THE GENERAL CONDITION EXISTING AT THAT TIME.  
 PLANE GRID, BEARING AND COORDINATES ARE BASED ON THE STATE OF CALIFORNIA COORDINATE SYSTEM, LAMBERT CONFORMAL PROJECTION, ZONE II NAD 83, CALIFORNIA, AS DESCRIBED IN SPECIAL PUBLICATION NO. 235, PUBLISHED BY NATIONAL OCEAN SURVEY. BASE MAPS ARE USDA NAIP 2010.  
 \*SHOALEST SOUNDING PER QUARTER PER REACH

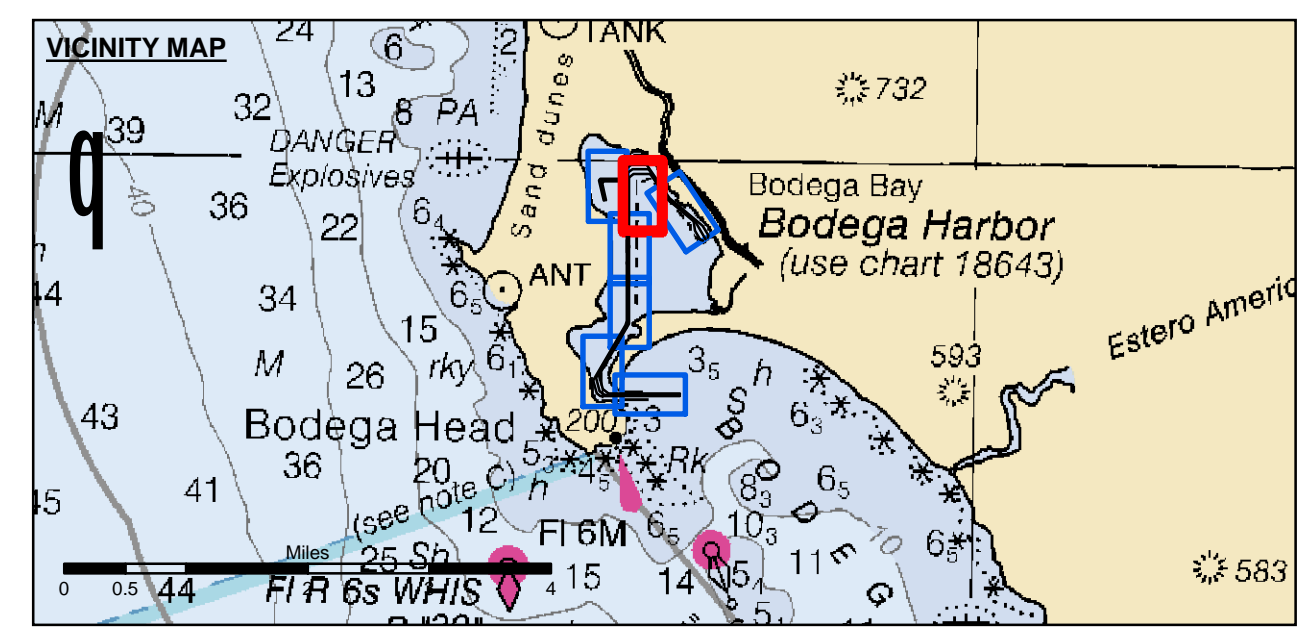
DRAWING NOT TO BE USED FOR NAVIGATION, ONLY CHANNEL CONDITION AT DATE OF SURVEY. THE LOCATION OF ALL NAVIGATION AIDS ARE BASED ON INFORMATION PROVIDED BY THE U.S. COAST GUARD. BUOY LOCATIONS REPRESENT THE POSITION OF THE SINKER ONLY.  
 SURVEYED BY THE CORPS OF ENGINEERS.  
 SOUNDINGS TAKEN BY FATHOMETER AND ARE SHOWN TO THE NEAREST FOOT AND TENTHS OF A FOOT.  
 SOUNDINGS ARE BASED ON THE DATUM OF MEAN LOWER LOW WATER AT THE LOCALITY, NAVD 88.  
 THE PROJECT DEPTH IS 12 FEET.  
 TIDE GAUGE AT BODEGA BAY COAST GUARD STATION DOCK BASED ON ELEVATION OF 17.50' MLLW ON COAST GUARD BRASS CAP PROPERTY CORNER. ELEVATION ESTABLISHED BY DIFFERENTIAL LEVELS RUN FROM "TIDAL 4 = ROAD" USED, 1941. ELEVATION 20.05' MLLW LOCATED IN THE TOWN OF BODEGA BAY.

CALIFORNIA  
 SONOMA COUNTY  
**BODEGA BAY CHANNEL**  
 CONDITION SURVEY  
 28-29 JANUARY 2017

**Sheet Reference Number**  
**4 of 7**



**0**



Federal Navigation Channel	Beacon, General	<b>Contours</b>
Shoaling Area	Obstruction Point	
Placement Area	Navigation Buoy	
Anchorage Area	Navigation Buoy	
Wreck Area	Shoalest Sounding*	
Submerged Wreck		-12
Angle Point		-11
		-10
		-9
		-8

**NOTES:**  
 HORIZONTAL COORDINATE SYSTEM:  
 NORTH AMERICAN DATUM OF 1983 (NAD83), PROJECTED TO THE STATE PLANE COORDINATE SYSTEM (SPCS), CALIFORNIA ZONE II. DISTANCE UNITS IN U.S. SURVEY FEET.

VERTICAL DATUM:  
 SOUNDINGS ARE SHOWN IN FEET AND INDICATE DEPTHS BELOW MEAN LOWER LOW WATER.

THE INFORMATION DEPICTED ON THIS MAP REPRESENTS THE RESULTS OF A SURVEY CONDUCTED ON THE DATE INDICATED AND CAN ONLY BE CONSIDERED TO REPRESENT THE GENERAL CONDITION EXISTING AT THAT TIME.

PLANE GRID, BEARING AND COORDINATES ARE BASED ON THE STATE OF CALIFORNIA COORDINATE SYSTEM, LAMBERT CONFORMAL PROJECTION, ZONE II NAD 83, CALIFORNIA, AS DESCRIBED IN SPECIAL PUBLICATION NO. 235, PUBLISHED BY NATIONAL OCEAN SURVEY. BASE MAPS ARE USDA NAIP 2010.

\*SHOALEST SOUNDING PER QUARTER PER REACH

DRAWING NOT TO BE USED FOR NAVIGATION, ONLY CHANNEL CONDITION AT DATE OF SURVEY. THE LOCATION OF ALL NAVIGATION AIDS ARE BASED ON INFORMATION PROVIDED BY THE U.S. COAST GUARD. BUOY LOCATIONS REPRESENT THE POSITION OF THE SINKER ONLY.

SURVEYED BY THE CORPS OF ENGINEERS.

SOUNDINGS TAKEN BY FATHOMETER AND ARE SHOWN TO THE NEAREST FOOT AND TENTHS OF A FOOT. SOUNDINGS ARE BASED ON THE DATUM OF MEAN LOWER LOW WATER AT THE LOCALITY, NAVD 88. THE PROJECT DEPTH IS 12 FEET.

TIDE GAUGE AT BODEGA BAY COAST GUARD STATION DOCK BASED ON ELEVATION OF 17.50' MLLW ON COAST GUARD BRASS CAP PROPERTY CORNER. ELEVATION ESTABLISHED BY DIFFERENTIAL LEVELS RUN FROM "TIDAL 4 = ROAD" USED, 1941, ELEVATION 20.05' MLLW LOCATED IN THE TOWN OF BODEGA BAY.

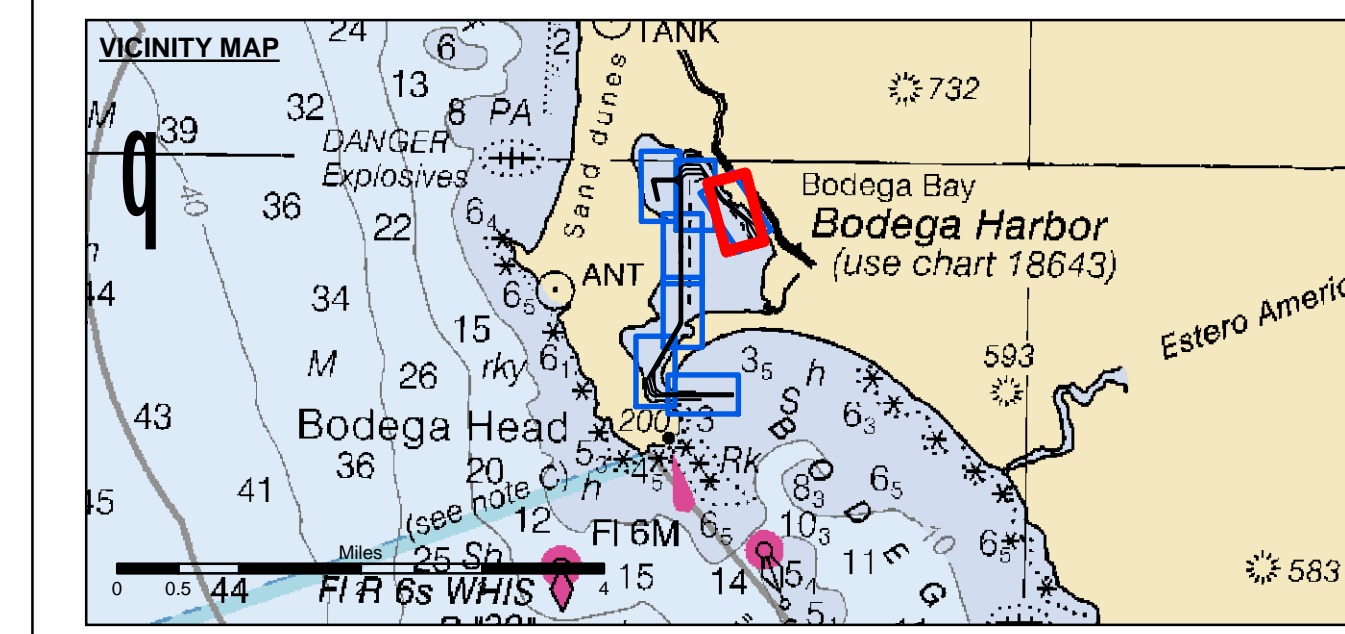
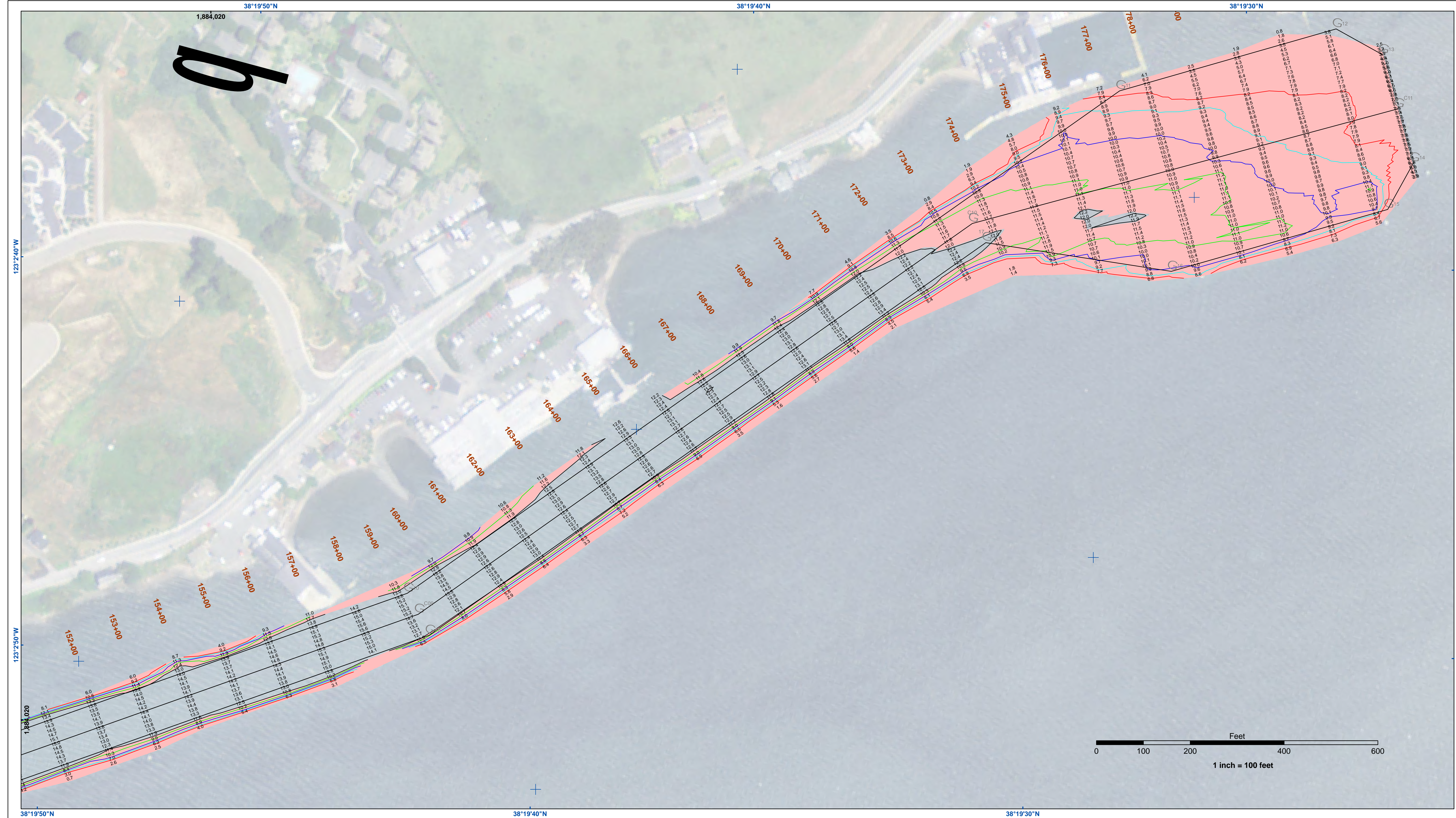
**US Army Corps of Engineers**  
 San Francisco District  
 1455 Market Street  
 San Francisco, CA 94103

**DISCLAIMER**  
 The United States Government furnishes this information for the general information of the user. The user is responsible for the results of any application of the data for other than its intended purpose. The United States Government makes no warranty, expressed or implied, concerning the accuracy, completeness, or timeliness of the information furnished. The United States Government under no liability whatsoever to any person by reason of any use made thereof. These data belong to the Government. Therefore the recipient may not transfer these data to others without also transferring this disclaimer.

Prepared Under the Direction of <b>JOHN C. MORROW</b> LT Colonel, C.E. District Engineer	Chart Date: Feb 06, 2017
Subplot: Hydro Survey Team Leader	Designed by: PDT
Recommended by: Chief, Hydro Survey Section	Drawn by: PDT
Approved: Chief, Construction Branch	

CALIFORNIA  
 SONOMA COUNTY  
**BODEGA BAY CHANNEL**  
 CONDITION SURVEY  
 28-29 JANUARY 2017

**Sheet Reference Number**  
**5 of 7**



	Federal Navigation Channel		Beacon, General	<b>Contours</b>	
	Shoaling Area		Obstruction Point		
	Placement Area		Navigation Buoy		
	Anchorage Area		Navigation Buoy		
	Wreck Area		Shoalest Sounding*		
	Submerged Wreck				-12
	Angle Point				-11
					-10
					-9
					-8

**NOTES:**  
 HORIZONTAL COORDINATE SYSTEM:  
 NORTH AMERICAN DATUM OF 1983 (NAD83), PROJECTED TO THE STATE PLANE COORDINATE SYSTEM (SPCS), CALIFORNIA ZONE II. DISTANCE UNITS IN U.S. SURVEY FEET.

VERTICAL DATUM:  
 SOUNDINGS ARE SHOWN IN FEET AND INDICATE DEPTHS BELOW MEAN LOWER LOW WATER.

THE INFORMATION DEPICTED ON THIS MAP REPRESENTS THE RESULTS OF A SURVEY CONDUCTED ON THE DATE INDICATED AND CAN ONLY BE CONSIDERED TO REPRESENT THE GENERAL CONDITION EXISTING AT THAT TIME.

PLANE GRID, BEARING AND COORDINATES ARE BASED ON THE STATE OF CALIFORNIA COORDINATE SYSTEM, LAMBERT CONFORMAL PROJECTION, ZONE II NAD 83, CALIFORNIA, AS DESCRIBED IN SPECIAL PUBLICATION NO. 235, PUBLISHED BY NATIONAL OCEAN SURVEY. BASE MAPS ARE USDA NAIP 2010.

\*SHOALEST SOUNDING PER QUARTER PER REACH

DRAWING NOT TO BE USED FOR NAVIGATION, ONLY CHANNEL CONDITION AT DATE OF SURVEY. THE LOCATION OF ALL NAVIGATION AIDS ARE BASED ON INFORMATION PROVIDED BY THE U.S. COAST GUARD. BUOY LOCATIONS REPRESENT THE POSITION OF THE SINKER ONLY.

SURVEYED BY THE CORPS OF ENGINEERS.

SOUNDINGS TAKEN BY FATHOMETER AND ARE SHOWN TO THE NEAREST FOOT AND TENTHS OF A FOOT. SOUNDINGS ARE BASED ON THE DATUM OF MEAN LOWER LOW WATER AT THE LOCALITY, NAVD 88. THE PROJECT DEPTH IS 12 FEET.

TIDE GAUGE AT BODEGA BAY COAST GUARD STATION DOCK BASED ON ELEVATION OF 17.50' MLLW ON COAST GUARD BRASS CAP PROPERTY CORNER. ELEVATION ESTABLISHED BY DIFFERENTIAL LEVELS RUN FROM "TIDAL 4 = ROAD" USED, 1941. ELEVATION 20.05' MLLW LOCATED IN THE TOWN OF BODEGA BAY.

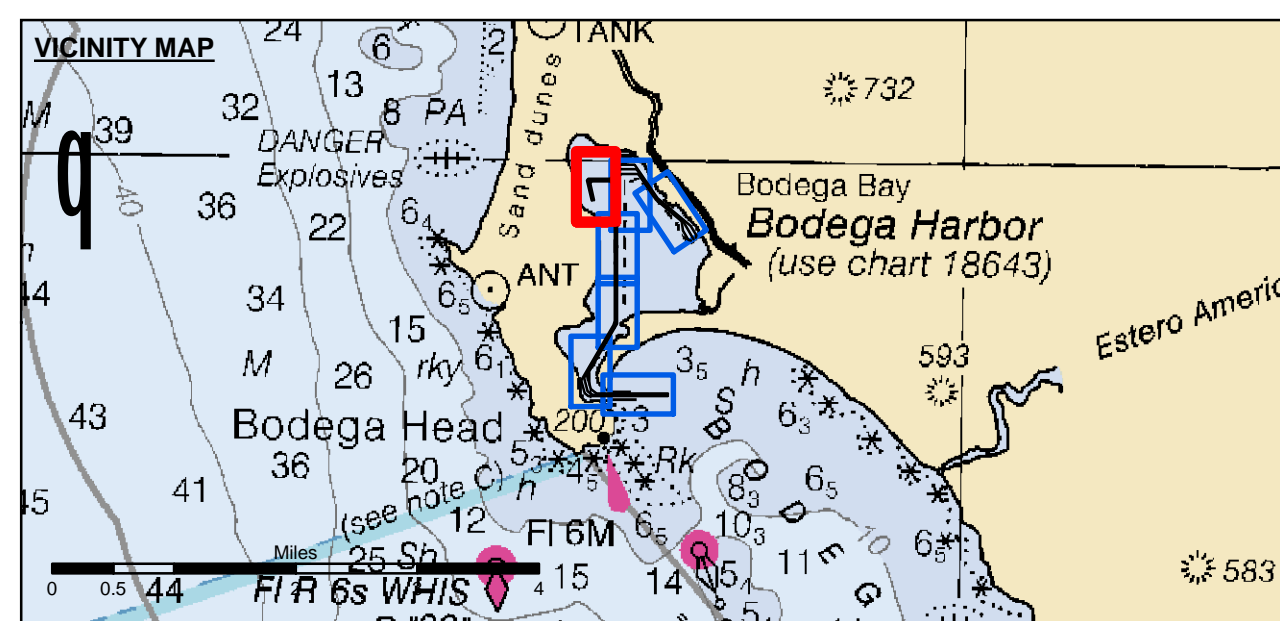
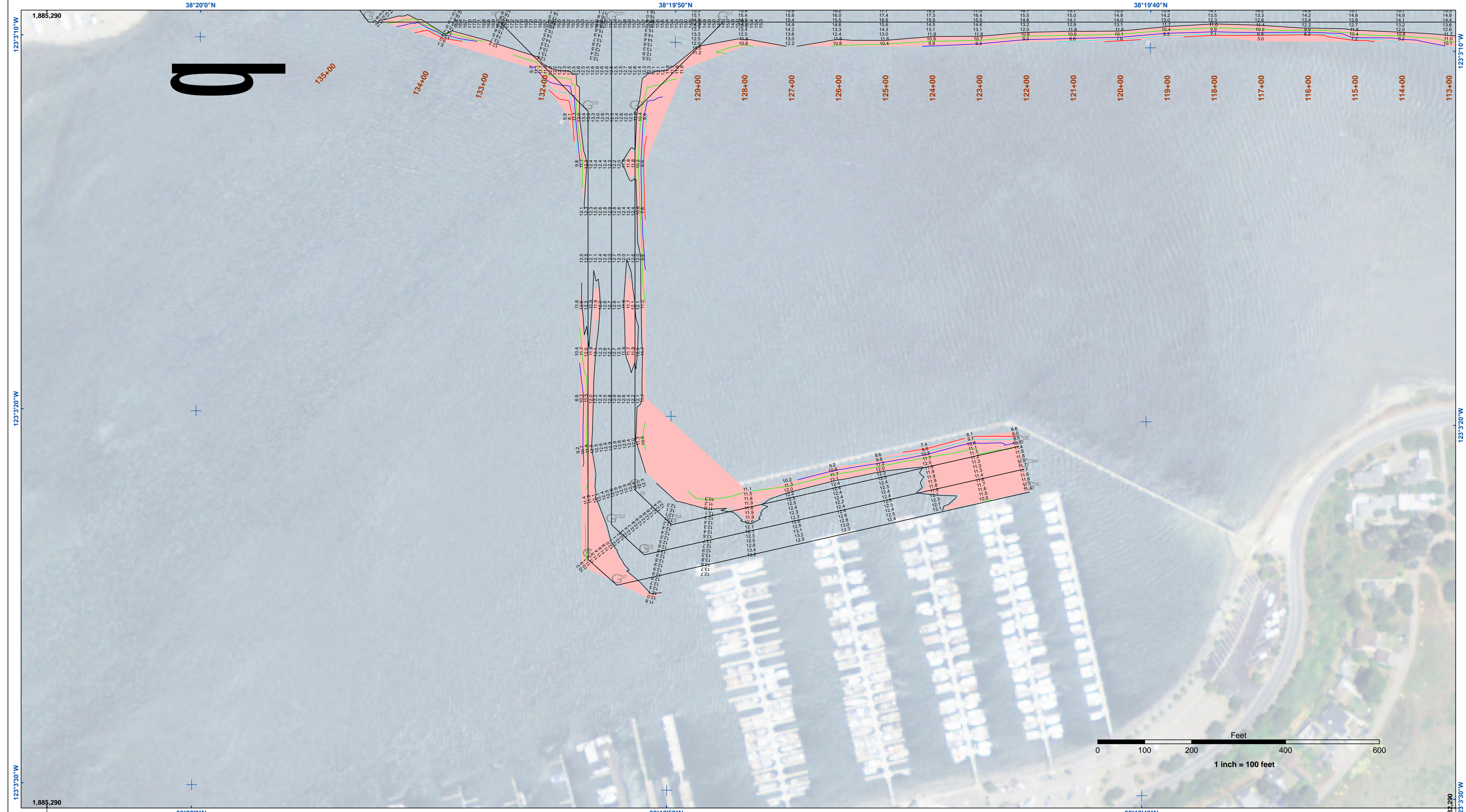
**US Army Corps of Engineers**  
 San Francisco District  
 1455 Market Street  
 San Francisco, CA 94103

**DISCLAIMER**  
 The United States Government furnishes this information as a service to the public and does not warrant, express or implied, the accuracy, completeness, or reliability of the information. The user is responsible for the results of any application of the data for other than its intended purpose. The United States Government shall not be liable for any damages, including reasonable attorneys' fees, resulting from the use of this information, whether or not such damages were foreseeable. The recipient may not transfer these data to others without also transferring this disclaimer.

Chart Date:	Feb 06, 2017
Surveyed By:	JOHN C. MORROW
Plotted By:	PDT
Checked By:	PDT
Drawn by:	PDT

CALIFORNIA  
 SONOMA COUNTY  
**BODEGA BAY CHANNEL**  
 CONDITION SURVEY  
 28-29 JANUARY 2017

**Sheet Reference Number**  
**6 of 7**



Federal Navigation Channel	Beacon, General	<b>Contours</b>
Shoaling Area	Obstruction Point	
Placement Area	Navigation Buoy	
Anchorage Area	Navigation Buoy	
Wreck Area	Shoalest Sounding*	
Submerged Wreck		-12
Angle Point		-11
		-10
		-9
		-8

**NOTES:**  
 HORIZONTAL COORDINATE SYSTEM:  
 NORTH AMERICAN DATUM OF 1983 (NAD83), PROJECTED TO THE STATE PLANE COORDINATE SYSTEM (SPCS), CALIFORNIA ZONE II. DISTANCE UNITS IN U.S. SURVEY FEET.  
 VERTICAL DATUM:  
 SOUNDINGS ARE SHOWN IN FEET AND INDICATE DEPTHS BELOW MEAN LOWER LOW WATER.  
 THE INFORMATION DEPICTED ON THIS MAP REPRESENTS THE RESULTS OF A SURVEY CONDUCTED ON THE DATE INDICATED AND CAN ONLY BE CONSIDERED TO REPRESENT THE GENERAL CONDITION EXISTING AT THAT TIME.  
 PLANE GRID, BEARING AND COORDINATES ARE BASED ON THE STATE OF CALIFORNIA COORDINATE SYSTEM, LAMBERT CONFORMAL PROJECTION, ZONE II NAD 83, CALIFORNIA, AS DESCRIBED IN SPECIAL PUBLICATION NO. 235, PUBLISHED BY NATIONAL OCEAN SURVEY.  
 BASE MAPS ARE USDA NAIP 2010.  
 \*SHOALEST SOUNDING PER QUARTER PER REACH

DRAWING NOT TO BE USED FOR NAVIGATION, ONLY CHANNEL CONDITION AT DATE OF SURVEY.  
 THE LOCATION OF ALL NAVIGATION AIDS ARE BASED ON INFORMATION PROVIDED BY THE U.S. COAST GUARD. BUOY LOCATIONS REPRESENT THE POSITION OF THE SINKER ONLY.  
 SURVEYED BY THE CORPS OF ENGINEERS.  
 SOUNDINGS TAKEN BY FATHOMETER AND ARE SHOWN TO THE NEAREST FOOT AND TENTHS OF A FOOT.  
 SOUNDINGS ARE BASED ON THE DATUM OF MEAN LOWER LOW WATER AT THE LOCALITY, NAVD 88.  
 THE PROJECT DEPTH IS 12 FEET.  
 TIDE GAUGE AT BODEGA BAY COAST GUARD STATION DOCK BASED ON ELEVATION OF 17.50' MLLW ON COAST GUARD BRASS CAP PROPERTY CORNER. ELEVATION ESTABLISHED BY DIFFERENTIAL LEVELS RUN FROM "TIDAL 4 = ROAD" USED, 1941. ELEVATION 20.05' MLLW LOCATED IN THE TOWN OF BODEGA BAY.

**US Army Corps of Engineers**  
 San Francisco District  
 1455 Market Street  
 San Francisco, CA 94103

**DISCLAIMER**  
 The United States Government furnishes this information for the purpose of the information only. The United States Government makes no warranty, expressed or implied, concerning the accuracy, completeness, or reliability of the information furnished. The United States Government assumes no liability whatsoever to any person by reason of any use made thereof. These data belong to the Government. Therefore the recipient may not transfer these data to others without also transferring this disclaimer.

Prepared Under the Direction of <b>JOHN C. MORROW</b> LT. COLONEL, C.E., DISTRICT ENGINEER	Surveyed By:	Chart Date:
Submitted: Hydro Survey Team Leader	Plotted By: PDT	Feb 06, 2017
Recommended: Chief, Hydro Survey Section	Checked By: PDT	Designed by:
Approved: Chief, Construction Branch	Drawn by: PDT	

CALIFORNIA  
 SONOMA COUNTY  
**BODEGA BAY CHANNEL**  
 CONDITION SURVEY  
 28-29 JANUARY 2017

**Sheet Reference Number**  
**7 of 7**