

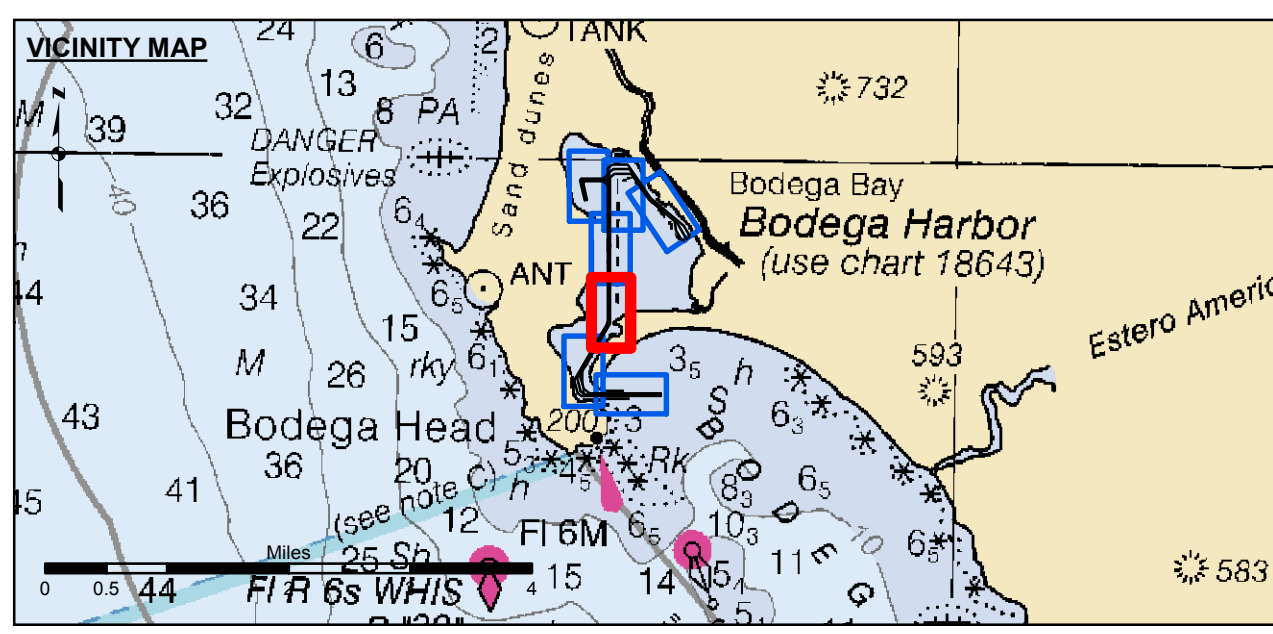
US Army Corps of Engineers
 San Francisco District
 1455 Market Street
 San Francisco, CA 94103

DISCLAIMER
 The United States Government makes no warranty, expressed or implied, concerning the accuracy, completeness, or timeliness of the data provided. The user is responsible for the results of any application of the data for other than the intended purpose. These data belong to the Government. Therefore, the Government may not transfer these data to others without also transferring this disclaimer.

Chart Date:	Sep 05, 2014
Designed by:	PDT
Plotted by:	PDT
Checked by:	PDT
Drawn by:	PDT

CALIFORNIA
 SONOMA COUNTY
**BODEGA BAY CHANNEL
 CONDITION SURVEY**
 27-29 AUGUST

**Sheet
 Reference
 Number**
 3 of 7



Federal Navigation Channel	Beacon, General	Contours
Shoaling Area	Obstruction Point	-12
Placement Area	Navigation Buoy	-11
Anchorage Area	Navigation Buoy	-10
Wreck Area	Shoalest Sounding*	-9
Submerged Wreck		-8
Angle Point		

NOTES:
 HORIZONTAL COORDINATE SYSTEM:
 NORTH AMERICAN DATUM OF 1983 (NAD83), PROJECTED TO THE STATE PLANE COORDINATE SYSTEM (SPCS), CALIFORNIA ZONE II. DISTANCE UNITS IN U.S. SURVEY FEET.
 VERTICAL DATUM:
 SOUNDINGS ARE SHOWN IN FEET AND INDICATE DEPTHS BELOW MEAN LOWER LOW WATER.
 THE INFORMATION DEPICTED ON THIS MAP REPRESENTS THE RESULTS OF A SURVEY CONDUCTED ON THE DATE INDICATED AND CAN ONLY BE CONSIDERED TO REPRESENT THE GENERAL CONDITION EXISTING AT THAT TIME.
 PLANE GRID, BEARING AND COORDINATES ARE BASED ON THE STATE OF CALIFORNIA COORDINATE SYSTEM, LAMBERT CONFORMAL PROJECTION, ZONE II NAD 83, CALIFORNIA, AS DESCRIBED IN SPECIAL PUBLICATION NO. 235, PUBLISHED BY NATIONAL OCEAN SURVEY. BASE MAPS ARE USDA NAIP 2010.
 *SHOALEST SOUNDING PER QUARTER PER REACH

DRAWING NOT TO BE USED FOR NAVIGATION. ONLY CHANNEL CONDITION AT DATE OF SURVEY.
 THE LOCATION OF ALL NAVIGATION AIDS ARE BASED ON INFORMATION PROVIDED BY THE U.S. COAST GUARD. BUOY LOCATIONS REPRESENT THE POSITION OF THE SINKER ONLY.
 SURVEYED BY THE CORPS OF ENGINEERS.
 SOUNDINGS TAKEN BY FATHOMETER AND ARE SHOWN TO THE NEAREST FOOT AND TENTHS OF A FOOT.
 SOUNDINGS ARE BASED ON THE DATUM OF MEAN LOWER LOW WATER AT THE LOCALITY, NAVD 88.
 THE PROJECT DEPTH IS 12 FEET.
 TIDE GAUGE AT BODEGA BAY COAST GUARD STATION DOCK BASED ON ELEVATION OF 17.50' MLLW ON COAST GUARD BRASS CAP PROPERTY CORNER. ELEVATION ESTABLISHED BY DIFFERENTIAL LEVELS RUN FROM "TIDAL 4 = ROAD" USED, 1941. ELEVATION 20.05' MLLW LOCATED IN THE TOWN OF BODEGA BAY.